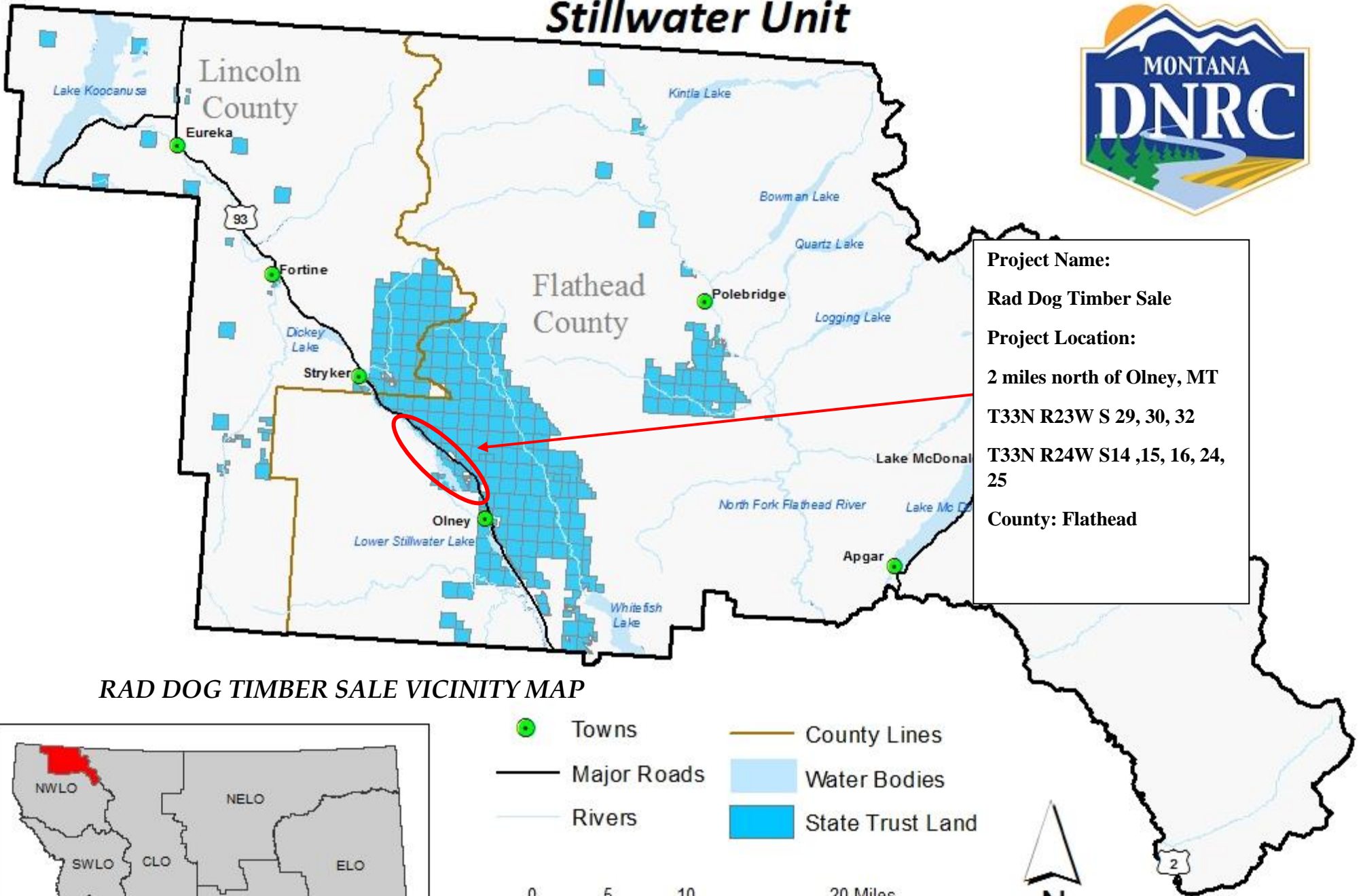


State Trust Land Vicinity Map

Stillwater Unit

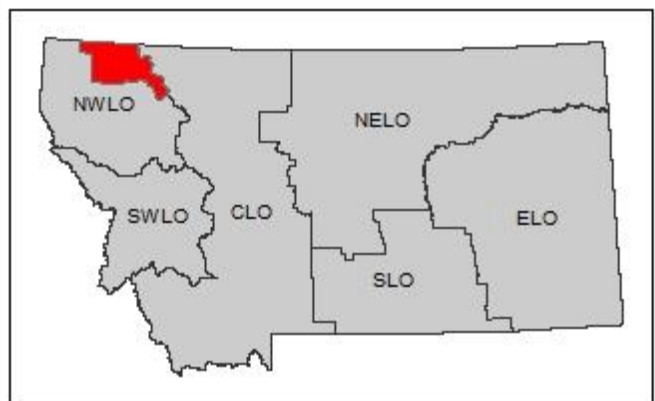


Project Name:
Rad Dog Timber Sale

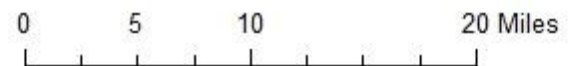
Project Location:
 2 miles north of Olney, MT
 T33N R23W S 29, 30, 32
 T33N R24W S14, 15, 16, 24, 25

County: Flathead

RAD DOG TIMBER SALE VICINITY MAP



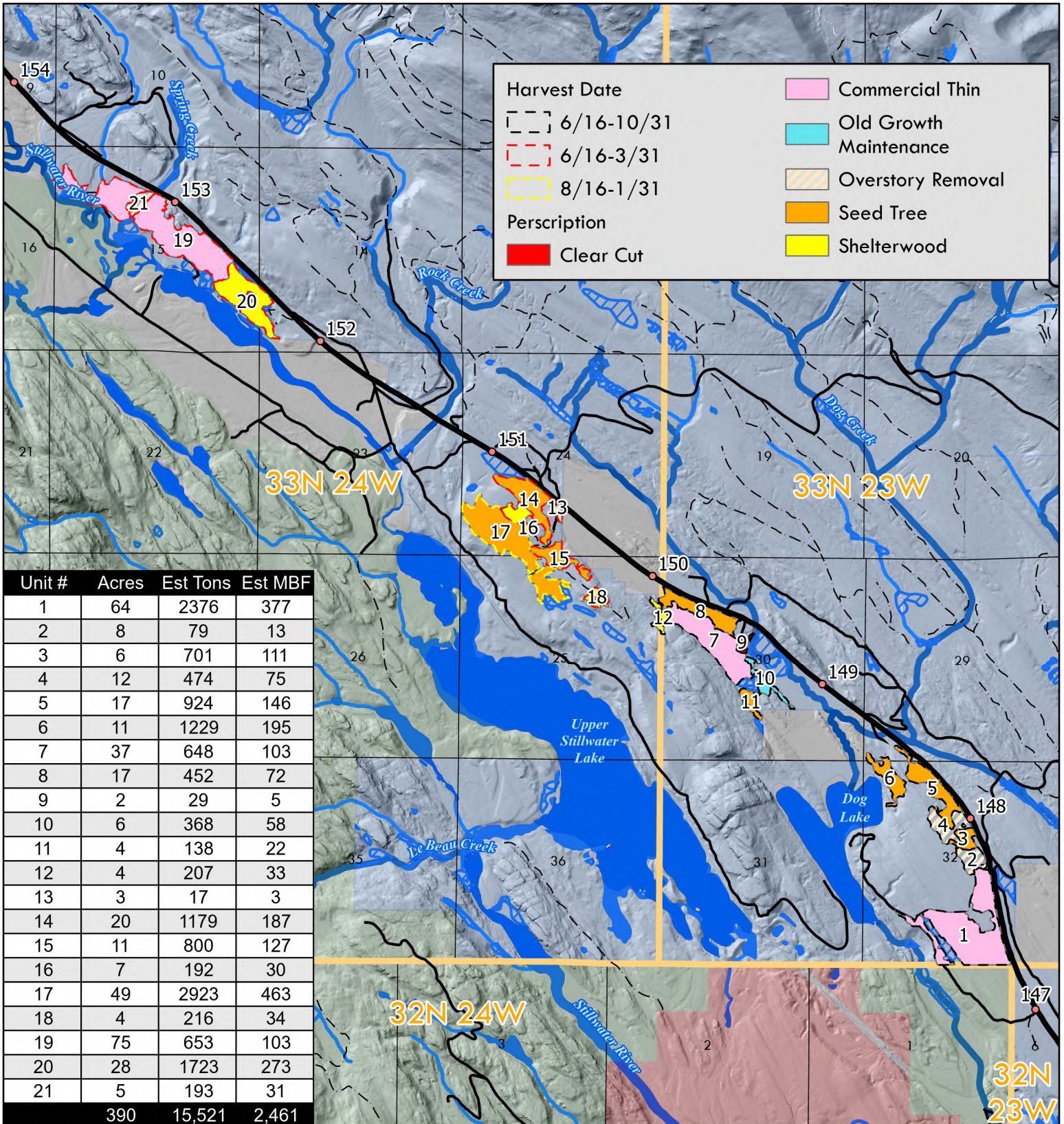
- Towns
- Major Roads
- Rivers
- County Lines
- Water Bodies
- State Trust Land



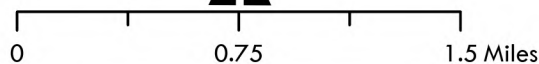
Rad Dog Timber Sale

T33N R23W S 29, 30, 32
T33N R24W S 14, 15, 16, 24, 25

Attachment A: Page 2 of 7



January 9, 2025



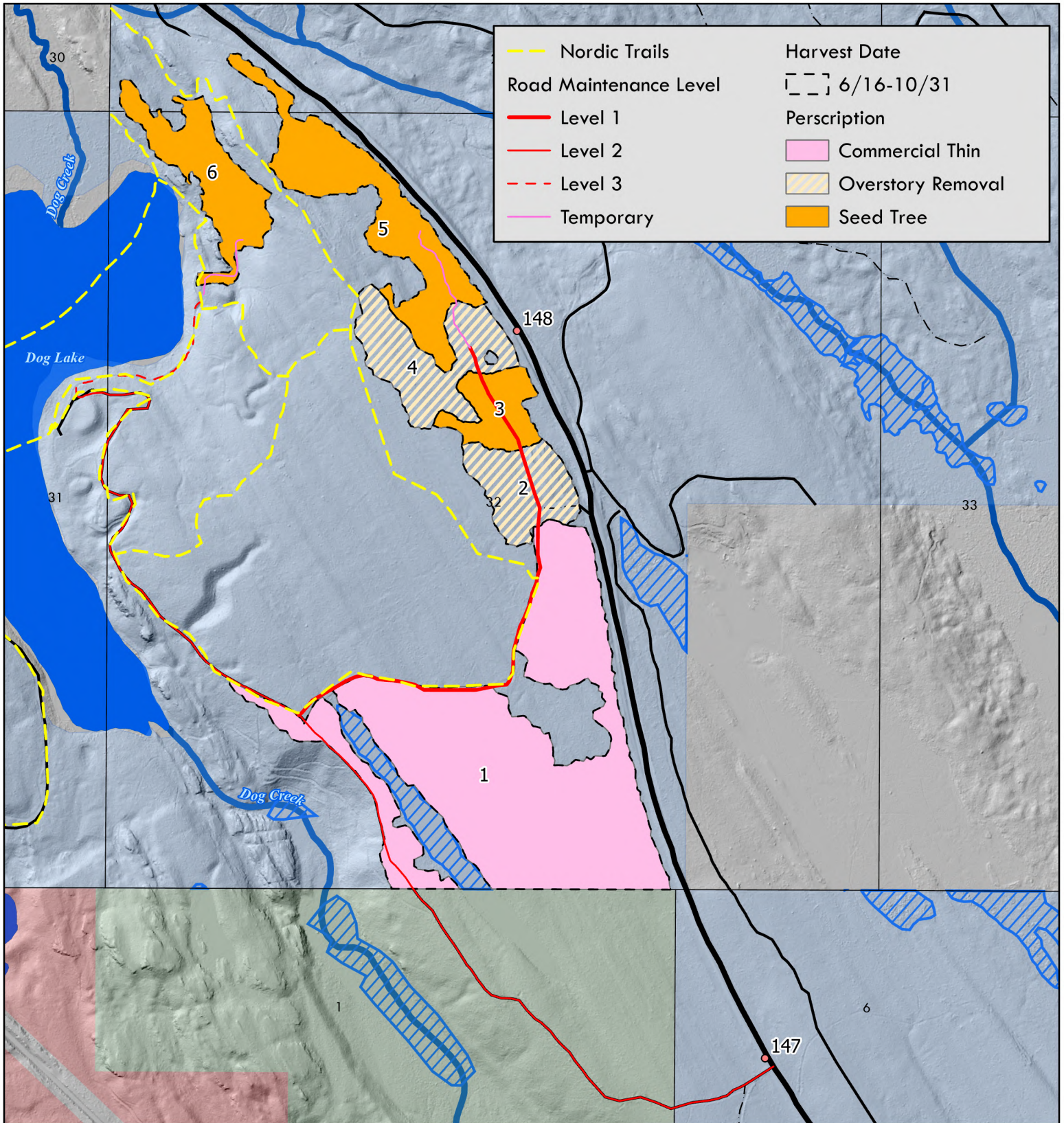
Joe Rizzi



Rad Dog Timber Sale

T33N R23W S 29, 32

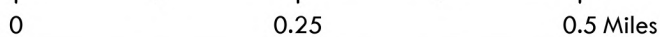
Attachment A: Page 3 of 7



January 9, 2025



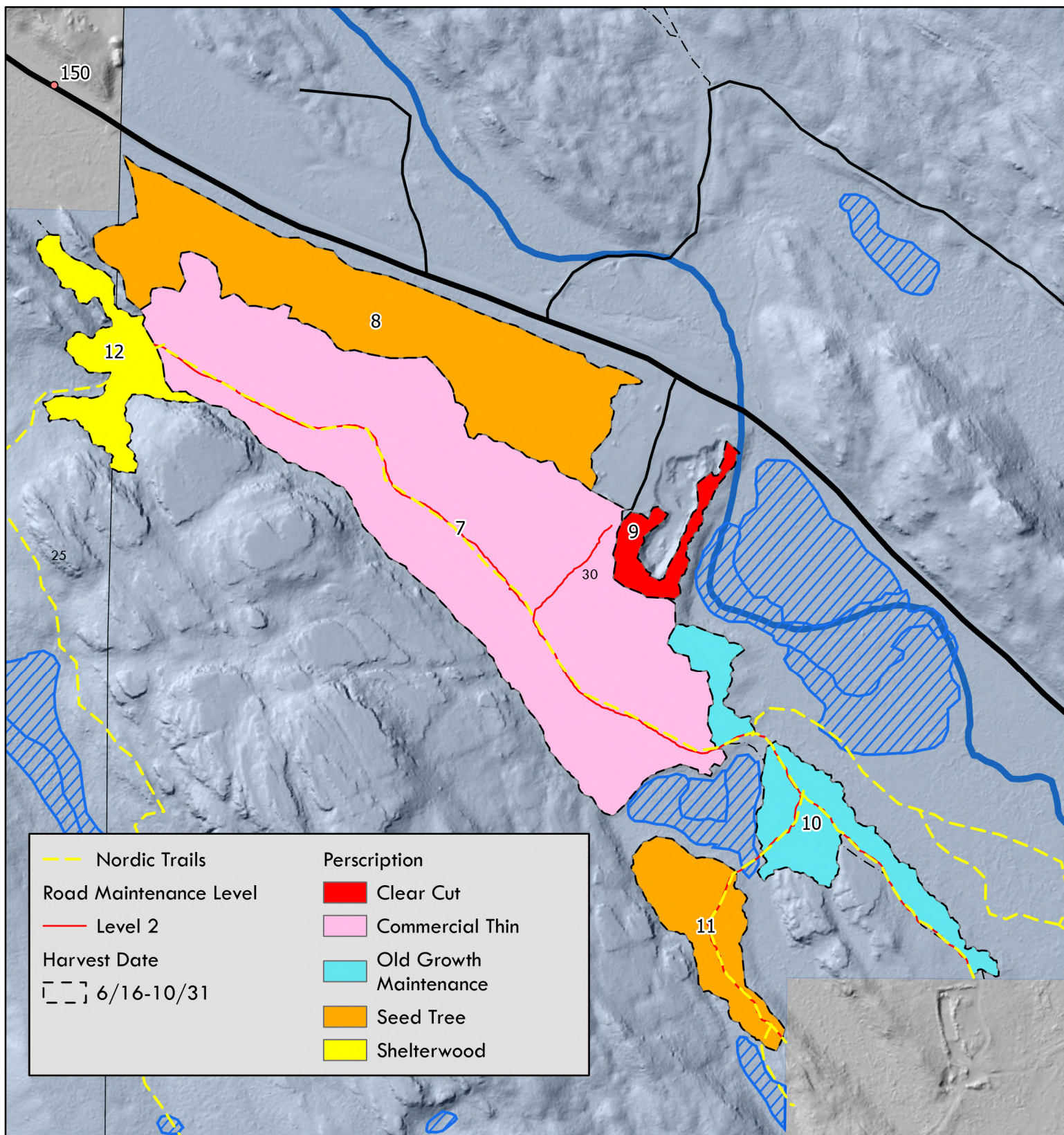
Joe Rizzi



Rad Dog Timber Sale

T33N R23W S 30
T33N R24W S 25

Attachment A: Page 4 of 7



January 9, 2025



0 0.1 0.2 Miles

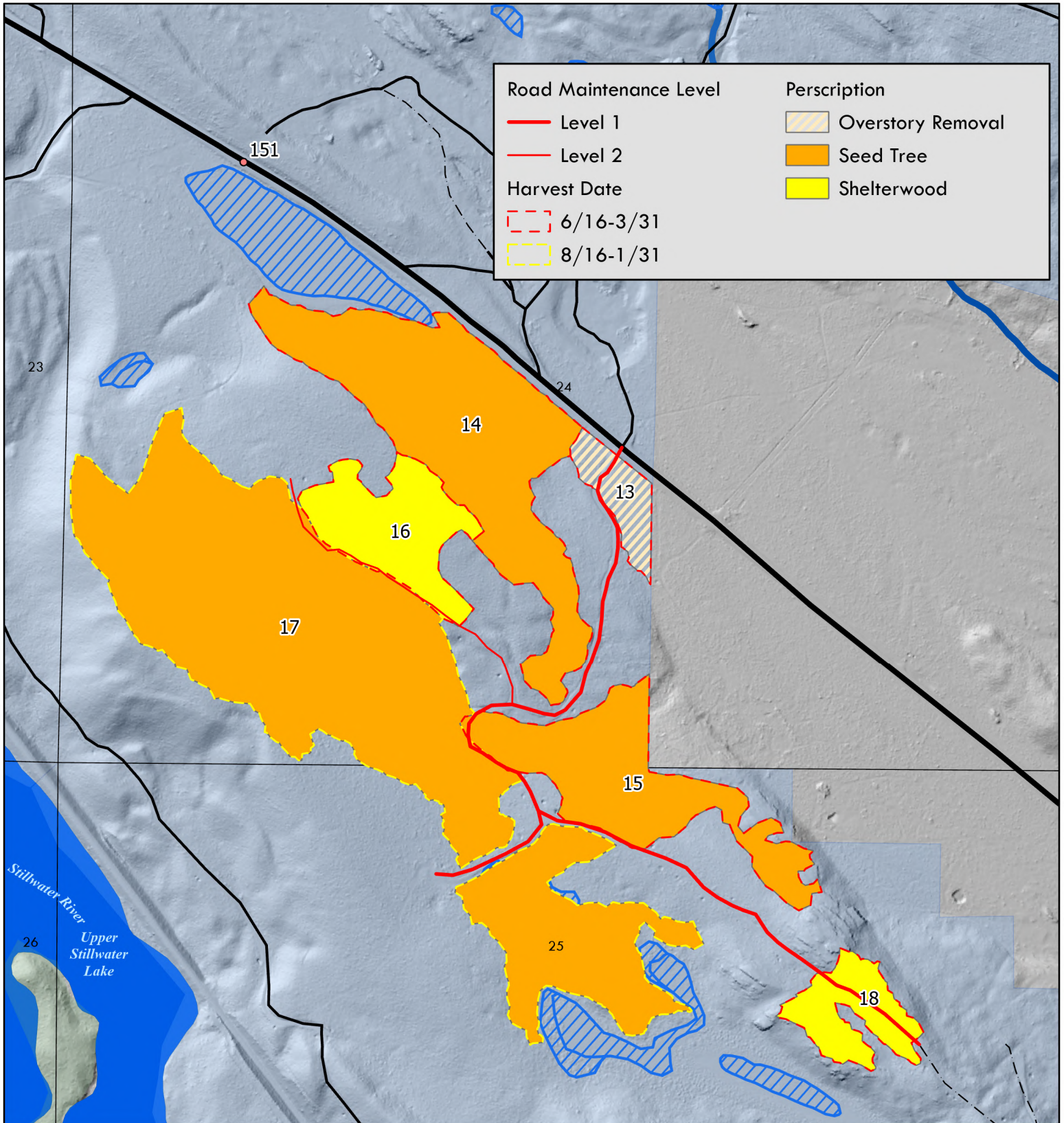
Joe Rizzi



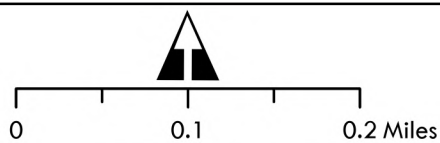
Rad Dog Timber Sale

T33N R24W S 24, 25

Attachment A: Page 5 of 7



January 9, 2025



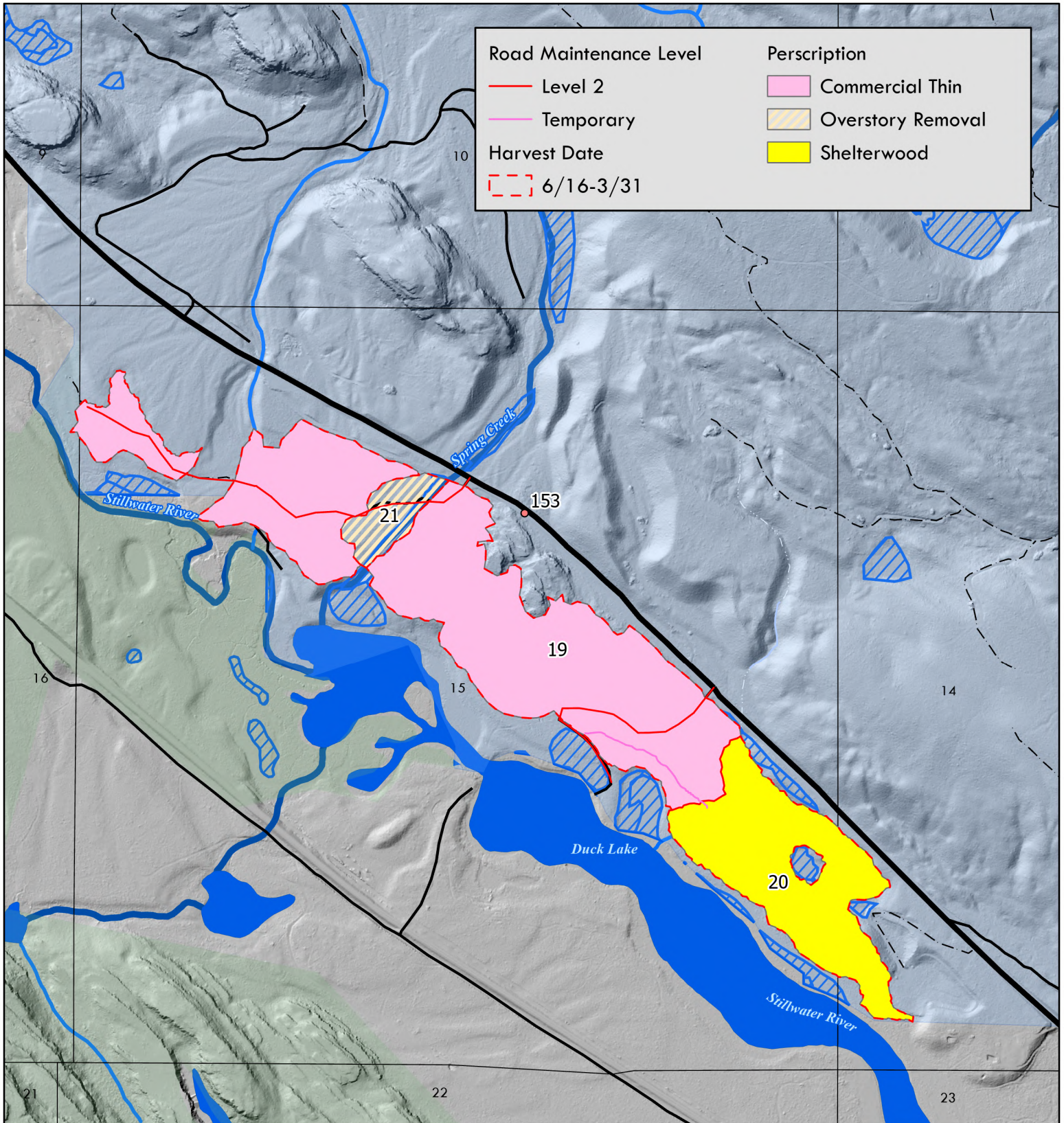
Joe Rizzi



Rad Dog Timber Sale

T33N R24W S 14, 15, 16

Attachment A: Page 6 of 7



January 9, 2025



Joe Rizzi

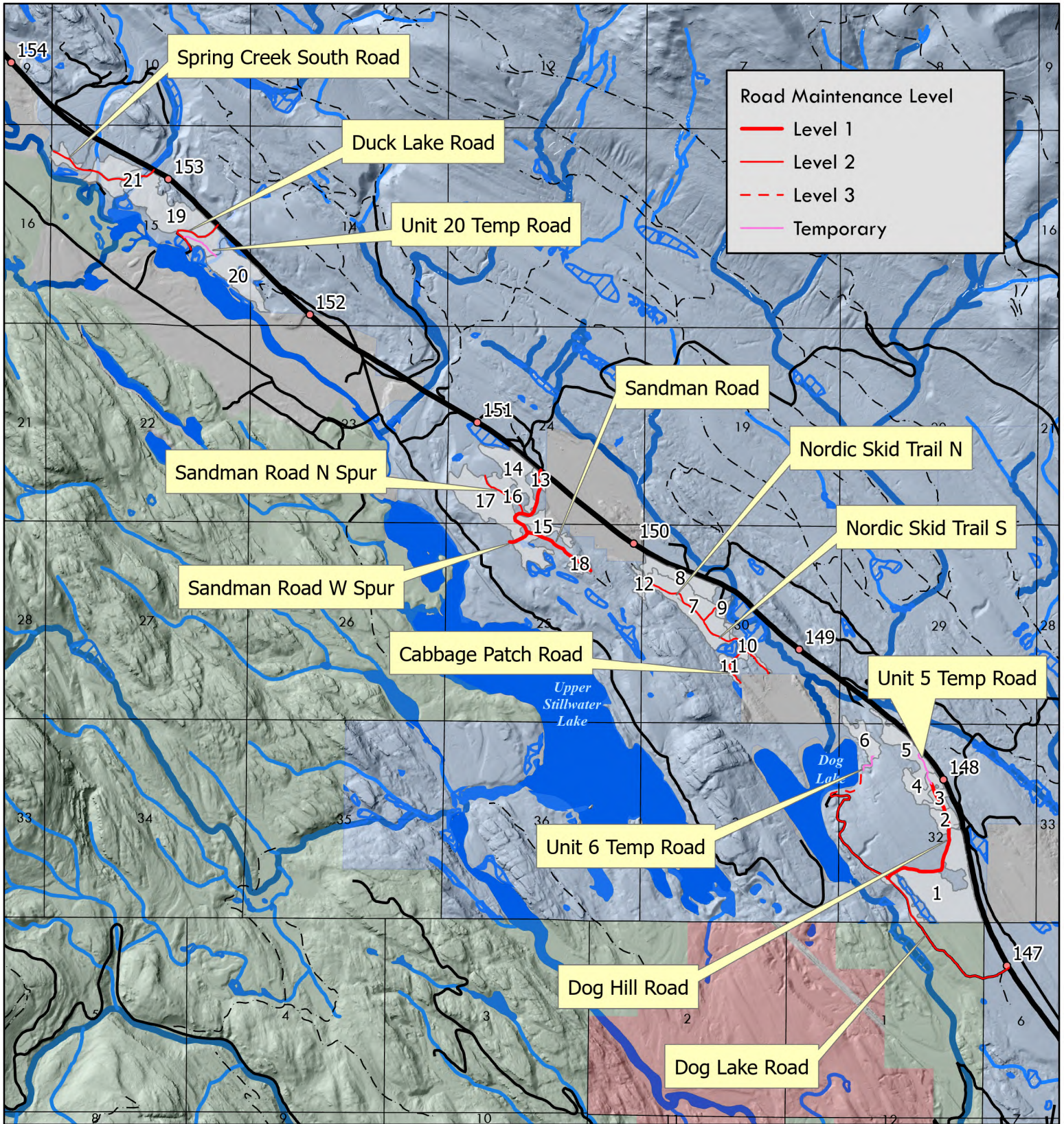
0 0.25 0.5 Miles



Rad Dog Timber Sale

T33N R23W S 29, 30, 32
T33N R24W S 14, 15, 16, 24, 25

Attachment A: Page 7 of 7



November 29, 2024



Joe Rizzi

0 1 2 Miles

