



**July 18, 2025
Initial Proposal**

Buffalo & Coyote Creeks Conifer Encroachment Removal

The Department of Natural Resources and Conservation (DNRC) has received a request from the Southwest Montana Sagebrush Partnership (SMSP) to perform conifer encroachment removal on approximately 940 acres in 3 locations of state land in the Buffalo, Reservoir and Coyote Creek area of Beaverhead County.

The project would be contained within the DNRC managed lands located in:

Sections 13, 14, 15, 21, 23, & 25 T8S R13W

The project will primarily benefit sage grouse habitat and other sage brush dependent species by removing scattered Douglas fir and juniper from sagebrush-grassland habitat. This project could begin as early as late summer early fall of 2025 and could take up to 5 years to complete. The DNRC along with the SMSP and Montana Department of Fish, Wildlife & Parks will be monitoring the project to see how the treatments are working and if improvements to habitat are occurring.

The DNRC is soliciting public input whether to authorize this proposal as part of their Montana Environmental Policy Act (MEPA) analysis.

The DNRC invites comments and suggestions concerning this proposal from interested parties. For further information on this proposed project, you may contact the Dillon Unit Manager, Tim Egan at tegan@mt.gov. We will be accepting comments until **August 15, 2025, at 5 pm**. Please respond to:

Montana DNRC
Attn: Tim Egan
840 North Montana
Dillon, MT 59725

Sincerely,

Tim Egan
Dillon Unit Manager
406-925-7074



State Trust Land Vicinity Map

Dillon Unit

Buffalo & Coyote Creek Conifer Removal

Sections: 13, 14, 15,
21, 23, & 24

Township: 8S

Range: 13W







&

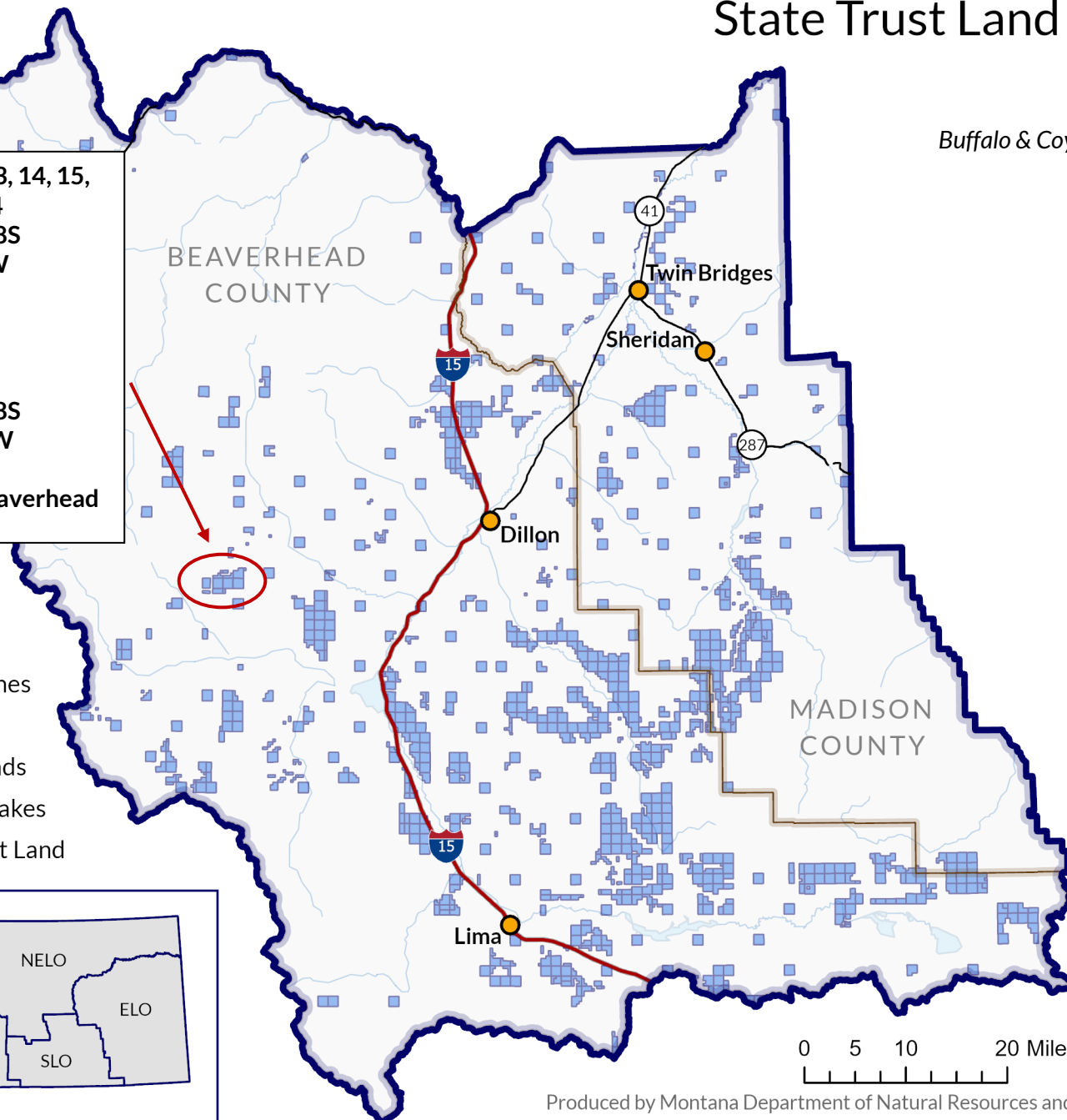
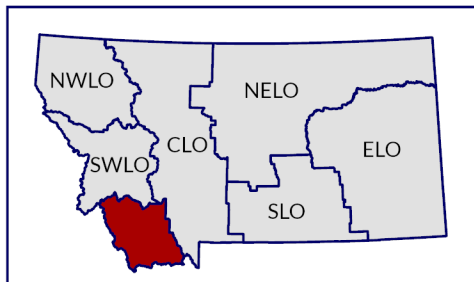
Section: 18

Township: 8S

Range: 12 W

County: Beaverhead

-  Towns
-  County Lines
-  Interstate
-  Major Roads
-  Rivers & Lakes
-  State Trust Land



0 5 10 20 Miles

Produced by Montana Department of Natural Resources and Conservation – 2025
NAD 1983 State Plane

Buffalo & Coyote Creek Conifer Removal Project



0 0.1 0.3 0.5
Miles

Scale: 1:40,000

Proposed Conifer
Removal Units

MT Public Lands

- US Bureau of Land Management
- Montana State Trust Lands
- US Forest Service

