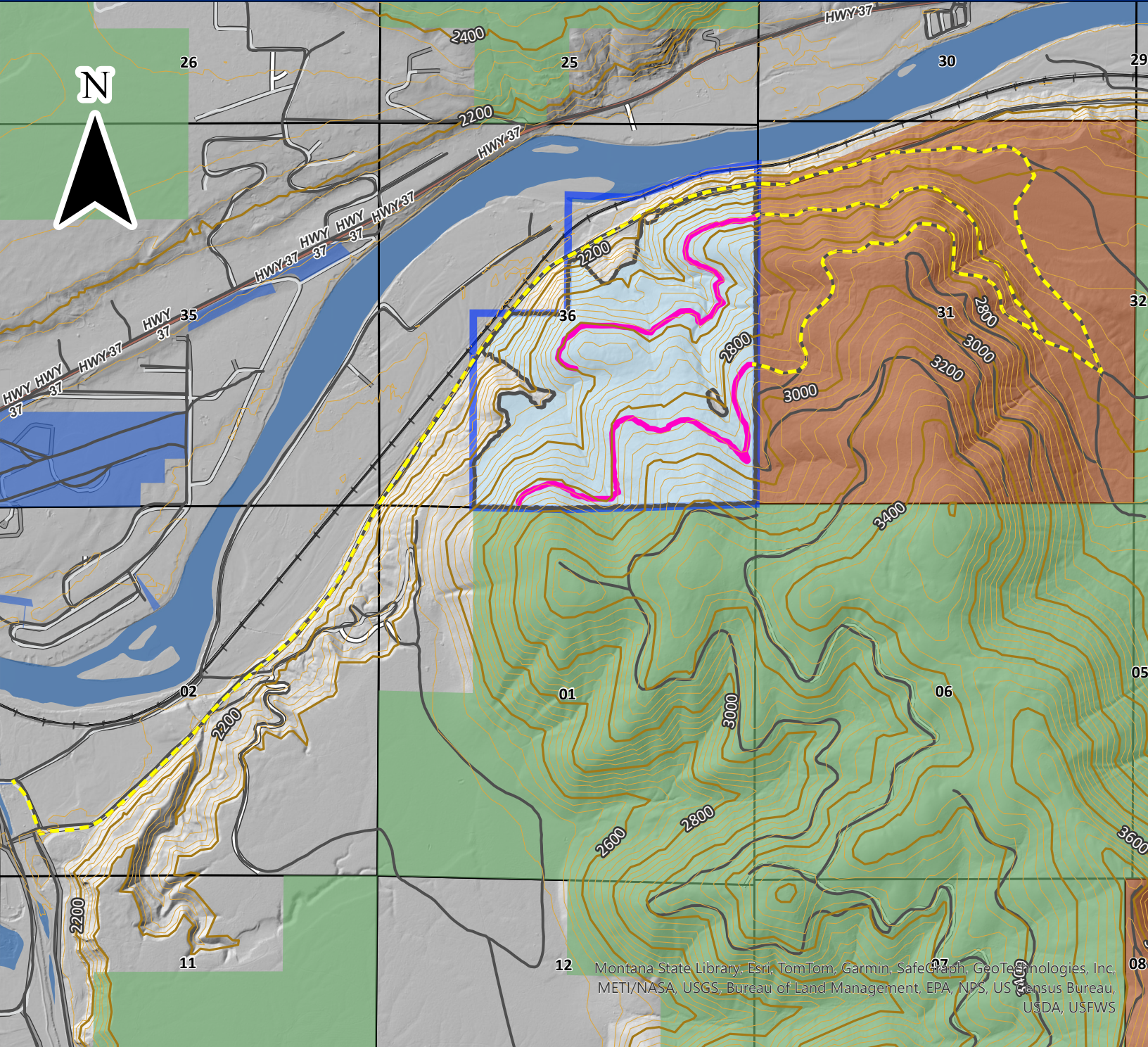


8% Timber Sale - Haul Route

T31N R31W Section 36

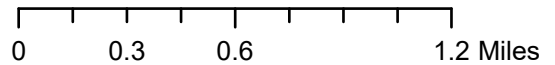


Attachment A



Montana State Library, Esri, TomTom, Garmin, SafeGraph, GeoTechnologies, Inc, METI/NASA, USGS, Bureau of Land Management, EPA, NPS, US Census Bureau, USDA, USFWS

- DNRC Trust Lands
- County Government
- US Forest Service
- Stimson Lumber
- Unit 1
- Haul Route
- Proposed Required Construction
- Existing Roads



DNRC Libby Unit
01/24/2025