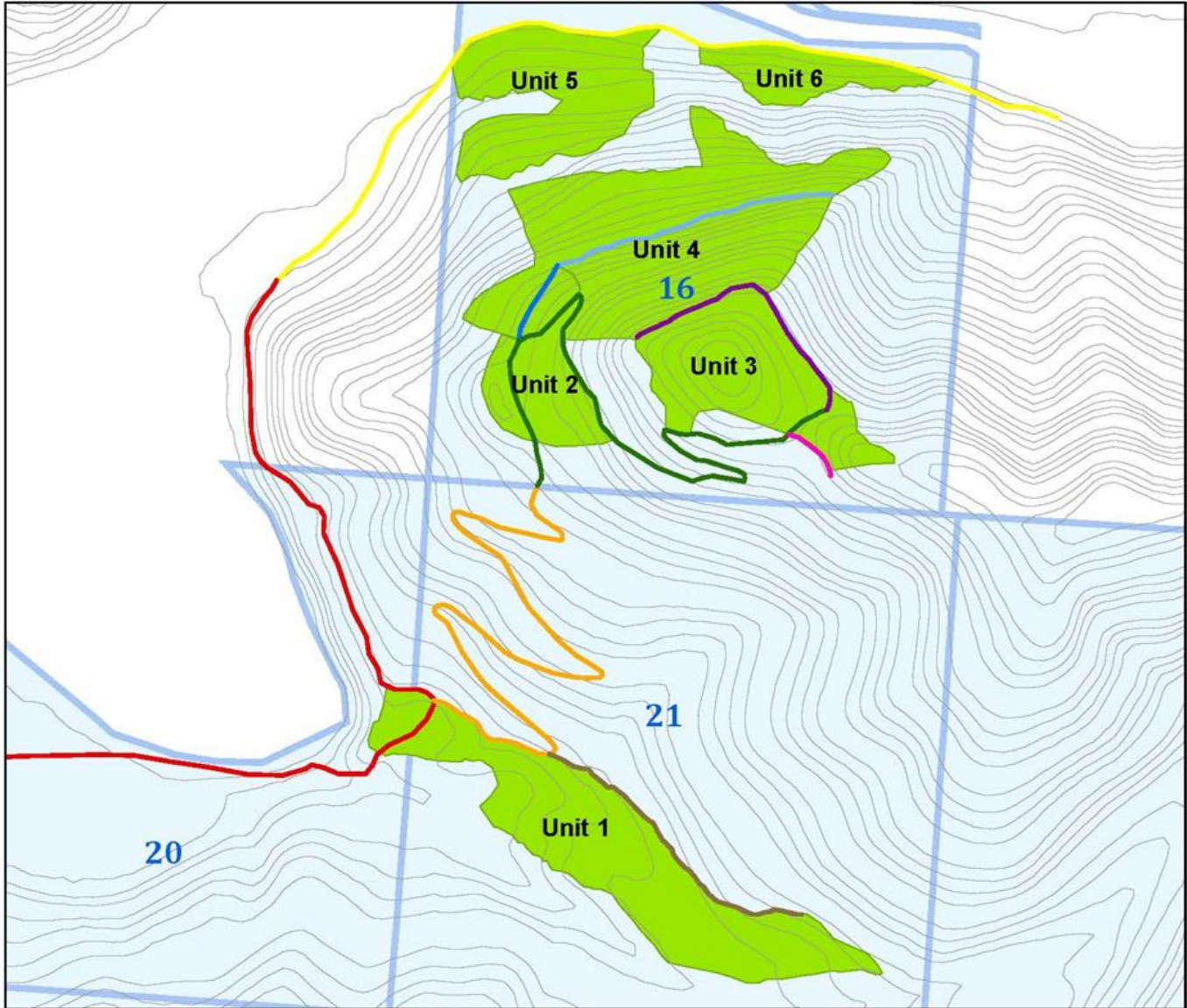




The Other Side Timber Sale Sections 16, 20, 21 T18N R27W Missoula Unit

Attachment A-1



0 0.25 0.5 1 Miles

- State Trust Lands
- Harvest Units
- Mill Creek County Rd
- 9113
- 18541
- Down Low Rd
- 27029
- 67056
- 67056 ext
- 67054
- Up Top Rd

Unit 1: 86 Acres Unit 2: 28 Acres Unit 3: 49 Acres
 Unit 4: 104 Acres Unit 5: 48 Acres Unit 6: 17 Acres
 Units 1-3, 5-6: Trees marked to leave with a purple horizontal stripe around the bole of the tree. Trees marked with a purple "W" are wildlife trees and must be left.
 Unit 4: Unmarked. See contract for harvest specifications.

Protect the residual stand and regeneration during all aspects of harvest operations.
 Use existing skid trails and landings when possible.

Harvest Boundaries: 3 purple stripes and blue flagging
 New Road Construction: Pink flagging and pink paint along centerline
 Road Stations: Pink and red/white candy stripe flagging and pink paint



L Converse 1/29/24