

NOTICE OF SALE

Department of Natural Resources & Conservation Timber Sale

The East French Basin Timber Sale is located within Sections 25, 26 & 36, T2N-R19W on the State's Hamilton Unit. Approximately 6,775 tons, consisting of mixed conifer sawlogs, are offered for sale.

Sealed bids will be opened at the Department of Natural Resources & Conservation, 2705 Spurgin Road, Missoula, Montana on **June 21, 2024 at 2:00 p.m.** Bids may be hand delivered or mailed and will be accepted any time prior to the bid opening. DNRC recommends that bidders contact the Trust Land Management Division (406-542-4300) prior to the bid opening to ensure that your bid has been received. **Bids must be accompanied by a deposit of \$1,800.00**, representing 5% of the minimum bid value of the sale in cashier's check, certified check, bank money order or bank draft to be applied to the first sale invoice for the successful bidder. Bid bonds will be accepted and, for the successful bidder, will be closed upon execution of the Timber Sale Contract and Timber Sale Bond.

The sale will be awarded to the highest responsible bidder. If the successful bidder is unable to execute the contract within **30** calendar days from the date the sale is awarded, the bid deposit will be retained by the Department as liquidated damages. The right is reserved to reject any or all bids.

Prospective bidders can obtain the sale prospectus, sale contract and bid forms from the Department of Natural Resources & Conservation, Trust Land Management Division, in Missoula (406-542-4300).

Visit our website at <https://dnrc.mt.gov/Forestry/Forest-Products/timber-sales> for upcoming sales and bid results.

TIMBER SALE PROSPECTUS
STATE OF MONTANA DEPARTMENT OF NATURAL RESOURCES AND CONSERVATION

Timber Sale Name: East French Basin			
For specific sale information, contact:			
Phone	406-210-0373	Hamilton Unit Office	
For copies of the Timber Sale Contract and bid forms, contact:			
Phone	406-542-4300	Forest Management Bureau	DNRC Missoula Office
Phone	406-542-4200	Southwestern Land Office	Missoula Office

General Bidding Information

1. Bids must be submitted on Department of Natural Resources & Conservation (State) bid forms.
2. Timber will be sold to the highest responsible bidder; however, the State reserves the right to reject any or all bids.
3. The State recommends that bidders contact the Forest Management Bureau, Trust Land Management Division (406-542-4300) prior to the bid opening to ensure that your bid has been received.
4. A **Bid Deposit** must accompany all bids and must be in the form of cash, cashiers check, certified check, money order, bank draft, surety bond or irrevocable letter of credit.
5. The Purchaser must submit a **Performance Bond** to the State within 30 days of notification of sale award. The bond amount will be, at a minimum, 20% of the total bid value of the sale. The performance bond may be cash, irrevocable letter of credit, surety bond or certificate of deposit. The performance bond must be maintained separately from other payments for the duration of the Timber Sale Contract. See the Timber Sale Contract for additional information.
6. The purchaser must submit an **Advance Stumpage Payment** prior to cutting any timber. The amount of the advance stumpage payment will cover six weeks of harvesting and be based on the expected harvest rate and the bid value of the stumpage. The advance stumpage payment may be cash, irrevocable letter of credit, payment bond or certificate of deposit.
7. At rates specified in the Contract, the purchaser will pay **Forest Improvement Fees** on all sawlog volume. All applicable **Road Use and/or Maintenance fees** will also be paid by the Purchaser in addition to stumpage payments.
8. This sale is being sold based on the gross weight of all species. Minimum price and bid price are on a per ton basis. Unless otherwise specified, the price applies to all species, green and dead. Price may vary by product. Billing will be based on gross weight. A weight ticket from a certified scale is required for each load hauled, regardless of product type.
9. The State has estimated the net scale merchantable sawlog volume to be sold under this Contract. Other products may be part of this sale. All delivered wood will be weighed and billed at per ton bid rates. The State recognizes that a percentage of delivered wood may not meet the log manufacturing and recovery standards of the Timber Sale Contract. The actual percentage will vary based on the log manufacturing and recovery specifications of the purchaser and tree conditions in the sale area. The actual delivered weight may vary, resulting in an overrun or under-run of the estimated tonnage. The State strongly recommends that bidders evaluate these effects before bidding.
10. The State does not conduct detailed road appraisals. All appraised costs are gross estimates or averages, provided only to show the relative amount of work required, and not the true market value. The State strongly recommends that bidders make their own estimates based on Contract requirements. Cost estimates provided are not guaranteed.
11. Bidders are encouraged to examine the complete Timber Sale Package and Sale Area prior to bidding. Additional information is available at the phone numbers shown above.
12. Estimates for sale volume, species percents, defect, product class, etc. provided in this prospectus and volume estimates listed in the Timber Sale Contract are not guaranteed.
13. This prospectus is provided for information purposes only. If the prospectus is in error or contradicts the Timber Sale Contract, the Contract governs.

Additional Sale Information:

1. Timber has not been marked for harvest. See VII. F. Unit Designations for harvest requirements.
2. Unit 4 is designated as excaline. However, "Alternate Yarding Systems May be Approved" See VII. G..
3. Unit 5 will utilize existing trails combined with excavated skid trails at the bottom of units for yarding. Excavated skid trails will be recontoured when skidding is completed. See VII. M. 4.
4. See VII. G. for additional "Special Operating Requirements"
5. Log trucks will be required to maintain speeds less than 10 mph on Pasture Draw Rd.
6. No logging or road maintenance will be allowed during big game hunting season (10/26-11/27).
7. There are **NO** grass seeding requirements for the contractor. Hamilton Unit will handle all necessary seed purchase and application.
8. Georeferenced pdf maps are available.
9. Contact Thayer Jacques, Hamilton Unit Forester, for access through the gate at the junction of Pasture Draw road in section 35 (406-210-0373).

Timber Sale Information Sheet
Montana Department of Natural Resources and Conservation

East French Basin Timber Sale - ReBid												
Timber Sale Cruise Data (Scribner 5.6" top DIB, Filter: All All Cut)												
SPECIES	PP	DF	WL	LP	ES	GF	RC	AF	WP	WH	Dead	TOTAL or AVE
Minimum Bid per ton	\$1.50											All except PP: \$5.25
Pounds per cubic foot	62.0	61.7			57.0			55.0			40.0	
Estimated tons of sawlogs	529	5888			290			42			0	6,775 tons
Estimated tons of non-sawlog material	8	48			2			0			0	59 tons
Gross MBF	65	863			53			8			0	928 MBF
% Cull and Breakage	3.1	7.5			1.0			5.0			0.0	0.4%
Net MBF	63	798			53			7			0	924 MBF
Average logs per MBF	27.7	20.7			14.2			10.5			0.0	20.7 logs/MBF
Average DBH	11.7	13.9			14.4			24.0			0.0	13.7 in.
Average tons to cut per acre	→											25 tons/ac
Average MBF to cut per acre	→											3.4 MBF/ac
Total Average TPA Cut	→											36
Calculated Sampling Error: Total cruised volume will fall between	811 and 1,191 Net MBF in 9 out of 10 cruises											19.0%
Tons Per Thousand Board Feet												
Conversion Factor - Estimated tons hauled per thousand Scribner board feet	6,775 estimated tons / 924 Net MBF											7.33 tons/MBF

Contract Information	
Contract Termination Date:	11/1/2028
Operating Period:	11/28 - 9/1 when soil conditions allow

Timber Sale Information Sheet
Montana Department of Natural Resources and Conservation

Logging Information	
% of volume logged by clearcut or seed tree cut	06%
% of volume logged with tractors	94%
% of volume logged by skyline	00%
% of volume logged by other system (excaline)	06%
Yarding distance tractor (average)	1000 ft.
Yarding distance skyline (average)	0 ft.
Yarding distance other system (excaline)	200 ft.
Estimated haul distance (paved)	136.0 miles
Estimated haul distance (unpaved)	7.0 miles

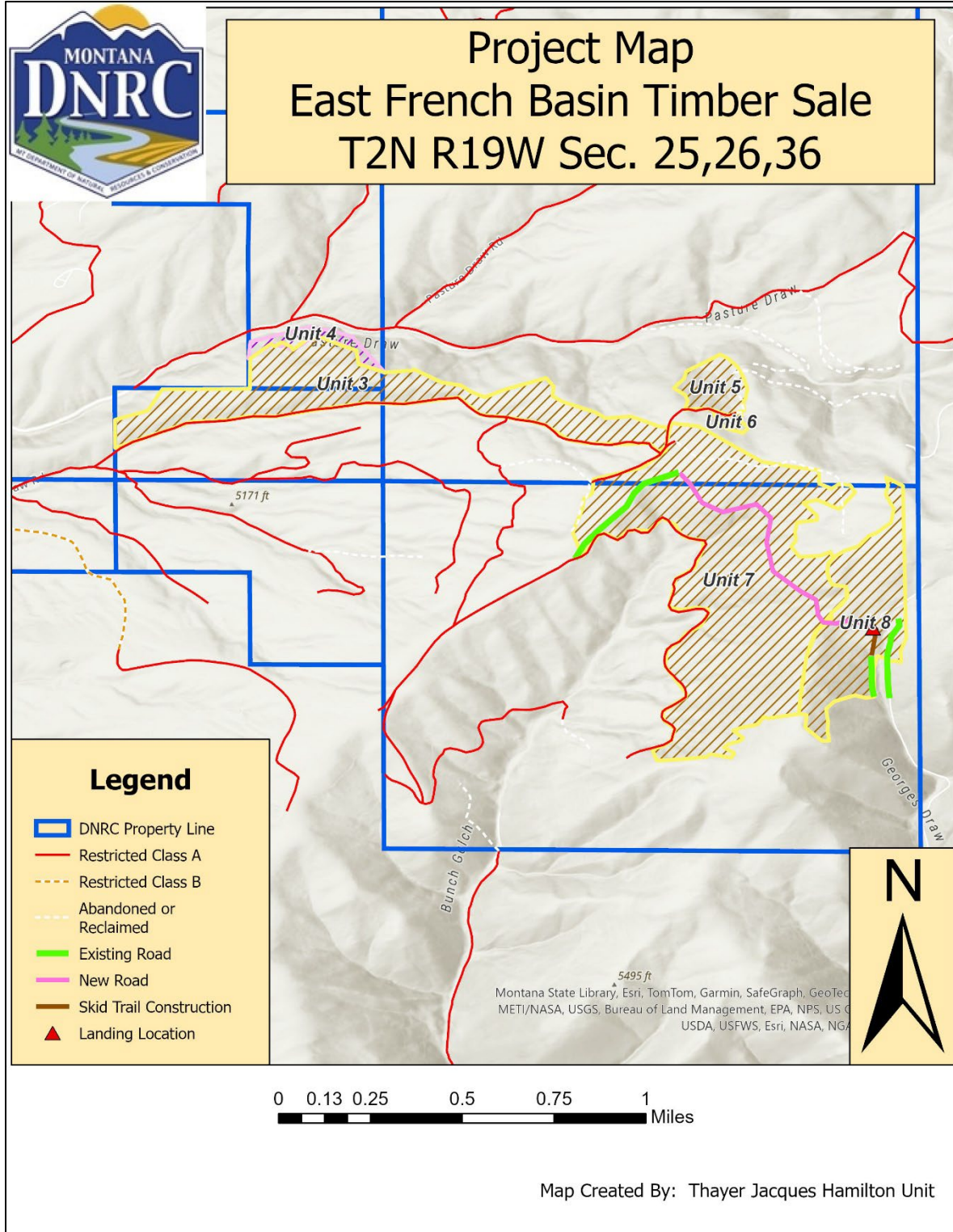
Purchaser fees and estimated costs	
Forest Improvement fee perMBF	\$21.75/MBF
Forest Improvement fee per ton	\$2.97/ton
Forest Improvement fee estimated total	\$20,121.75
Forest Improvement fee quarterly installment	\$3,353.63
Estimated Purchaser-do FI total \$	\$11,912
Estimated Purchaser-do slash disposal work per ton	\$0.00/ton

Road development and maintenance fees and estimates	
Estimated road development cost total	\$25,016
Estimated road development cost per ton	\$3.69/ton
Estimated road development cost perMBF	\$27.07/MBF
Estimated Purchaser-do road maintenance cost total	\$11,724
Estimated Purchaser-do road maintenance cost per ton	\$1.73/ton
Private road maintenance charges per ton	\$0.00/ton
USFS road maintenance charges per ton	\$0.00/ton
Miles of road construction	1.0 miles
Miles of road reconstruction	0.0 miles
Miles of road with site improvements	0.0 miles
Miles of road reclamation or abandonment	1.0 miles
Miles of road maintenance and blading	5.5 miles

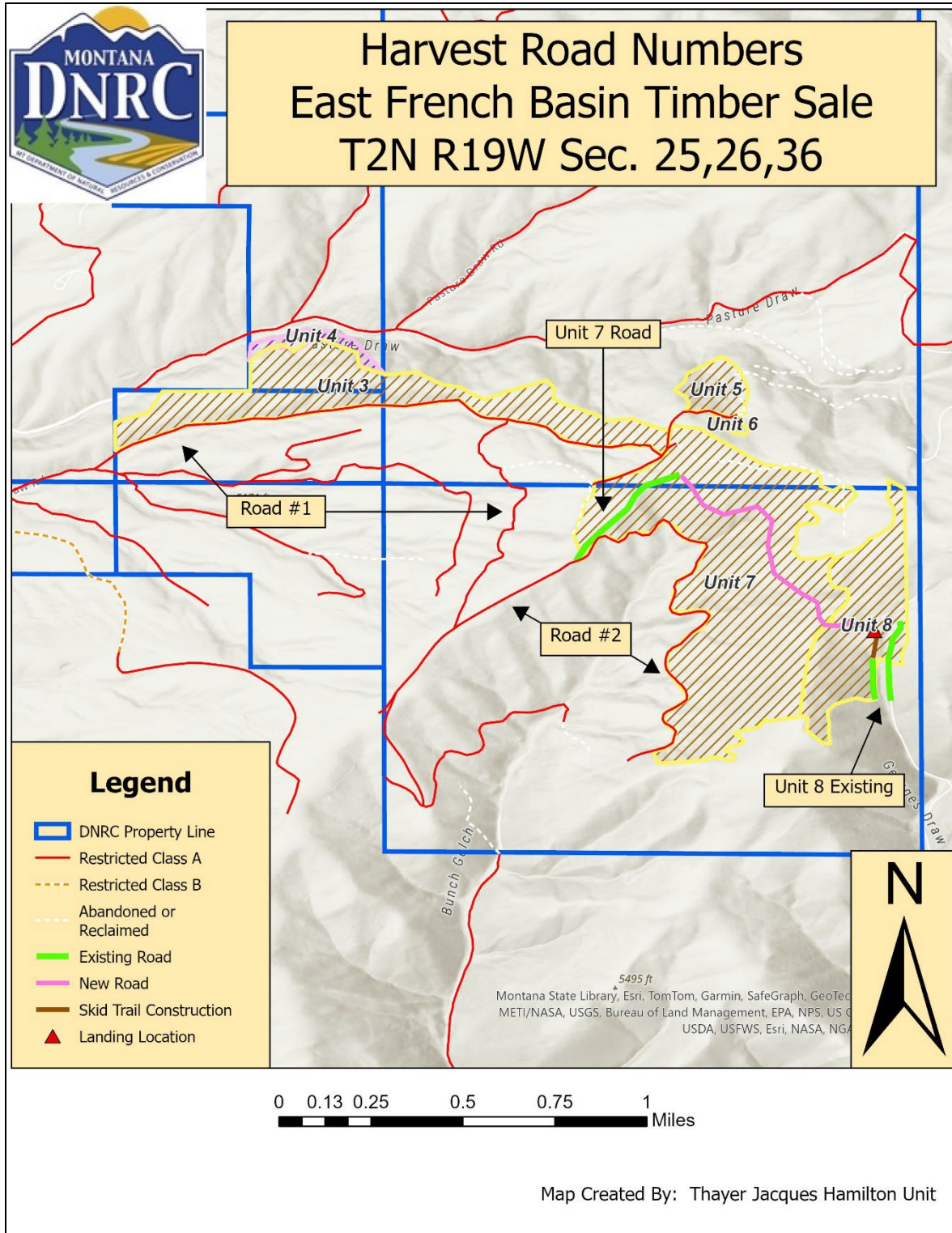
Unit harvest volume				
Unit #	Acres	Est Tons	Est MBF	Harvest Deadline
Cutting Unit 3	66.77	2121	289	August 1, 2028
Cutting Unit 4	5.20	266	40	August 1, 2028
Cutting Unit 5	6.95	227	31	August 1, 2028
Cutting Unit 6	1.41	40	5	August 1, 2028
Cutting Unit 7	151.10	2787	380	August 1, 2028
Cutting Unit 8	44.66	1334	182	August 1, 2028

STATE OF MONTANA
 TIMBER SALE CONTRACT
 ATTACHMENT A

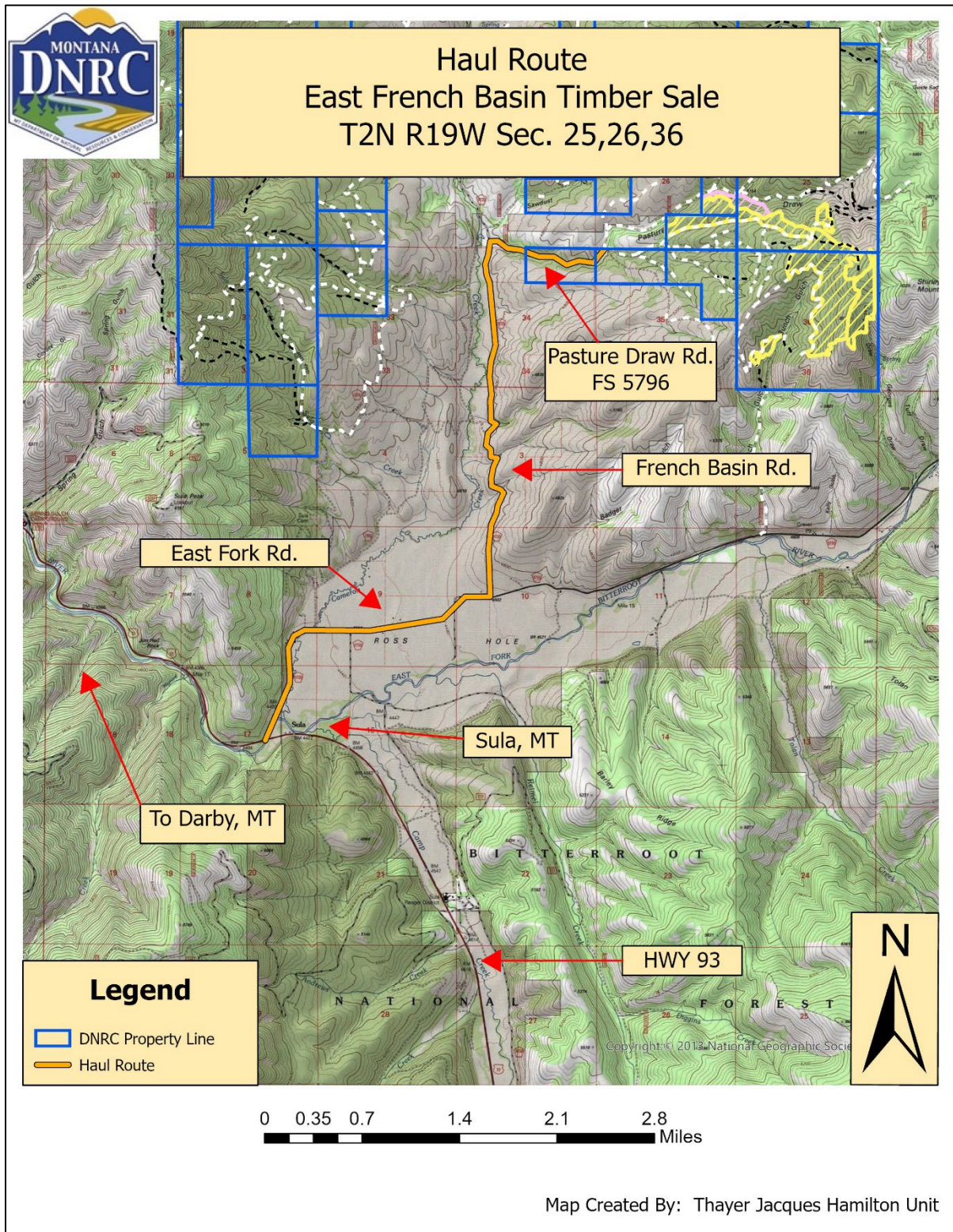
A-1 SALE MAP



A-2 ROAD NUMBERS



A-7 HAUL ROUTE



A-8 VICINITY MAP

State Trust Land Vicinity Map

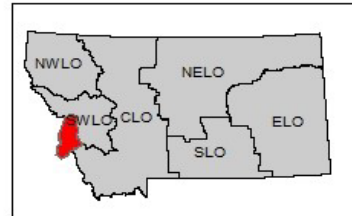
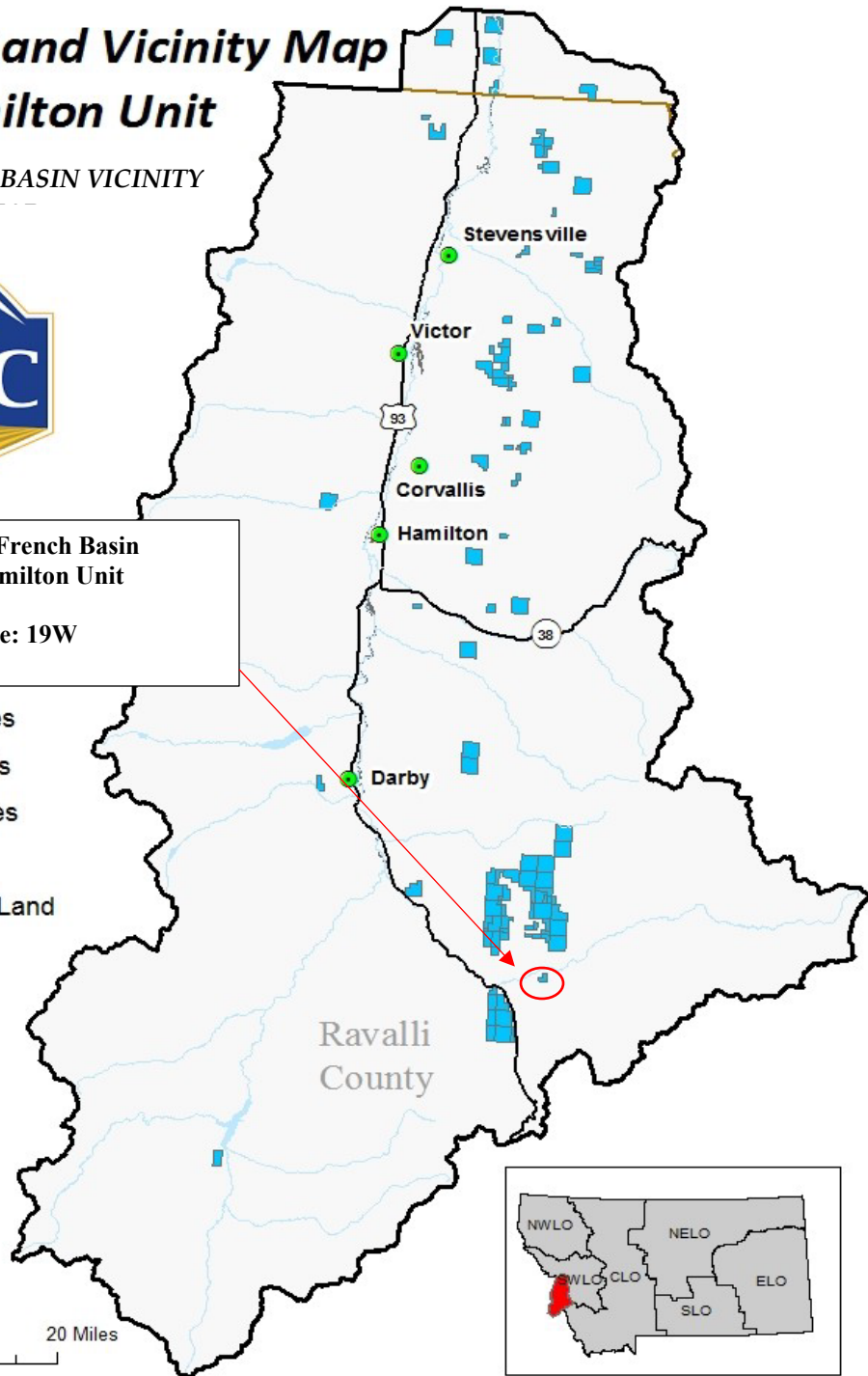
Hamilton Unit

EAST FRENCH BASIN VICINITY



Project Name: East French Basin
Project Location: Hamilton Unit
Section: 25,26,36
Township: 2N **Range:** 19W
County: Ravalli

- County Lines
- Major Roads
- Water Bodies
- Rivers
- State Trust Land



Produced by Montana Department of Natural Resources and Conservation 11/1/2019
Datum: NAD 1983 StatePlane