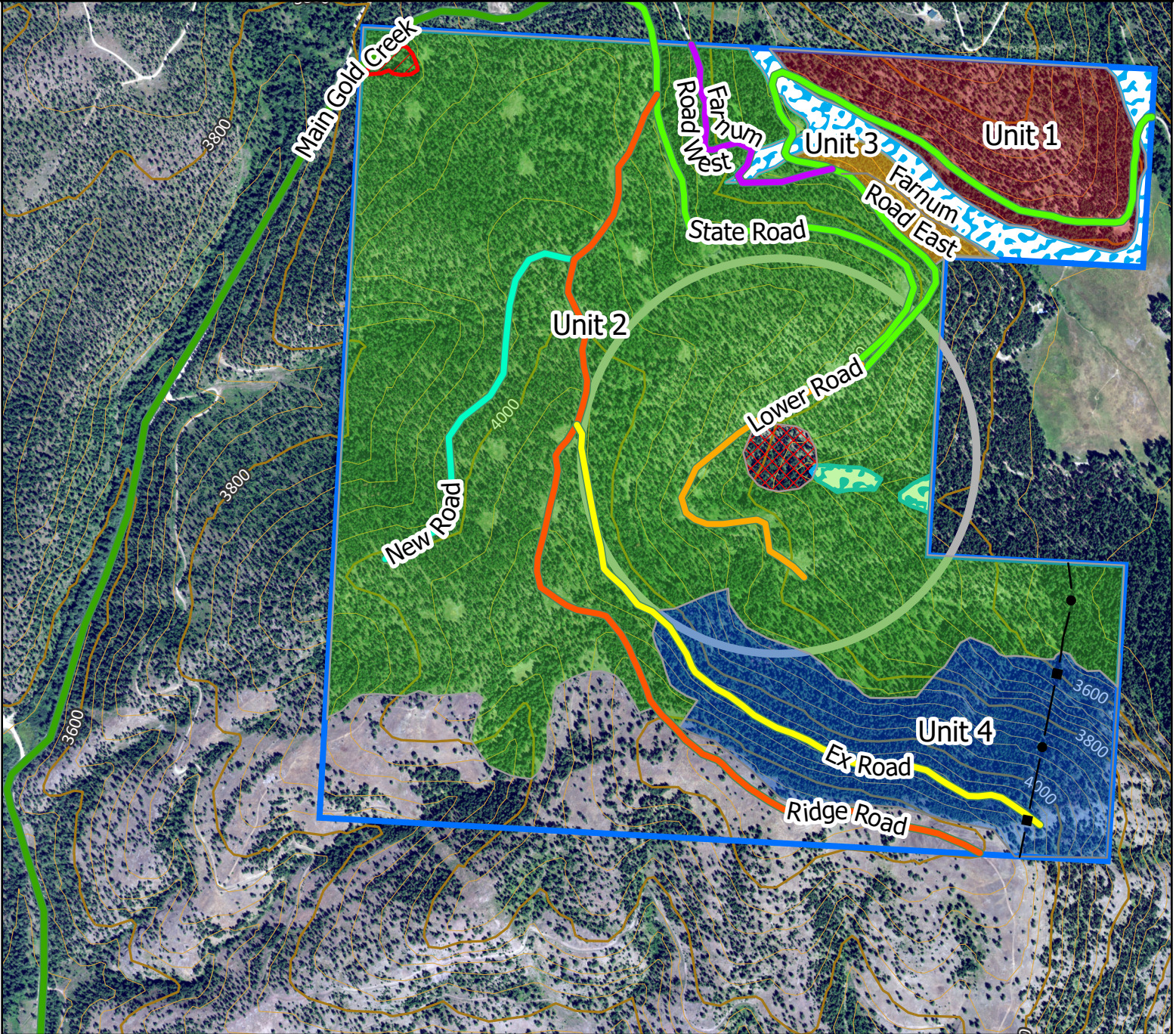




Allen 4/2023

# Goldielogs Timber Sale Section 36 T14N R17W

ATTACHMENT A2



Name	Miles	Type of Work	Length (feet)
New Road	0.5	New Construction	2725
State Road	2	Maintenance	10437
Ridge Road	1.4	Maintenance / Improvements	7220
Lower Road	0.5	Maintenance / Improvements	2667
Ex Road	0.9	Reconstruction	4511
Main Gold Creek	1.9	Maintenance	10019
Farnum Road West	0.4	Maintenance / Improvements	1914
Farnum Road East	0.2	Maintenance / Improvements	1138

- Powerline
- Equipment Restriction Zone
- Goshawk Restriction Zone
- SMZ
- Goshawk Nest Buffer

