

## NOTICE OF SALE

### Department of Natural Resources & Conservation Timber Sale

The Browns Ranch Timber Sale is located within Section 16, T25N-R23W on the State's Kalispell Unit. Approximately 15,507 tons, consisting of mixed conifer sawlogs, are offered for sale.

Sealed bids will be opened at the Department of Natural Resources & Conservation, 2705 Spurgin Road, Missoula, Montana on **May 16, 2023 at 2:00 p.m.** Bids may be hand delivered or mailed and will be accepted any time prior to the bid opening. DNRC recommends that bidders contact the Trust Land Management Division (406-542-4300) prior to the bid opening to ensure that your bid has been received. **Bids must be accompanied by a deposit of \$10,242.00**, representing 5% of the minimum bid value of the sale in cashier's check, certified check, bank money order or bank draft to be applied to the first sale invoice for the successful bidder. Bid bonds will be accepted and, for the successful bidder, will be closed upon execution of the Timber Sale Contract and Timber Sale Bond.

The sale will be awarded to the highest responsible bidder. If the successful bidder is unable to execute the contract within **30** calendar days from the date the sale is awarded, the bid deposit will be retained by the Department as liquidated damages. The right is reserved to reject any or all bids.

Prospective bidders can obtain the sale prospectus, sale contract and bid forms from the Department of Natural Resources & Conservation, Trust Land Management Division, in Missoula (406-542-4300).

Visit our website at <http://dnrc.mt.gov/divisions/trust/forest-management/timber-sale-information> for upcoming sales and bid results.

**TIMBER SALE PROSPECTUS**  
**STATE OF MONTANA DEPARTMENT OF NATURAL RESOURCES AND CONSERVATION**

<b>Timber Sale Name: Browns Ranch</b>			
<b>For specific sale information, contact: Kayla Johnson</b>			
Phone	406-751-2264	Kalispell	Unit Office
<b>For copies of the Timber Sale Contract and bid forms, contact:</b>			
Phone	406-542-4300	Forest Management Bureau	DNRC Missoula Office
Phone	406-751-2240	Northwestern	Land Office

**General Bidding Information**

1. Bids must be submitted on Department of Natural Resources & Conservation (State) bid forms.
2. Timber will be sold to the highest responsible bidder; however, the State reserves the right to reject any or all bids.
3. The State recommends that bidders contact the Forest Management Bureau, Trust Land Management Division (406-542-4300) prior to the bid opening to ensure that your bid has been received.
4. A **Bid Deposit** must accompany all bids and must be in the form of cash, cashiers check, certified check, money order, bank draft, surety bond or irrevocable letter of credit.
5. The Purchaser must submit a **Performance Bond** to the State within 30 days of notification of sale award. The bond amount will be, at a minimum, 20% of the total bid value of the sale. The performance bond may be cash, irrevocable letter of credit, surety bond or certificate of deposit. The performance bond must be maintained separately from other payments for the duration of the Timber Sale Contract. See the Timber Sale Contract for additional information.
6. The purchaser must submit an **Advance Stumpage Payment** prior to cutting any timber. The amount of the advance stumpage payment will cover six weeks of harvesting and be based on the expected harvest rate and the bid value of the stumpage. The advance stumpage payment may be cash, irrevocable letter of credit, payment bond or certificate of deposit.
7. At rates specified in the Contract, the purchaser will pay **Forest Improvement Fees** on all sawlog volume. All applicable **Road Use and/or Maintenance fees** will also be paid by the Purchaser in addition to stumpage payments.
8. This sale is being sold based on the gross weight of all species. Minimum price and bid price are on a per ton basis. Unless otherwise specified, the price applies to all species, green and dead. Price may vary by product. Billing will be based on gross weight. A weight ticket from a certified scale is required for each load hauled, regardless of product type.
9. The State has estimated the net scale merchantable sawlog volume to be sold under this Contract. Other products may be part of this sale. All delivered wood will be weighed and billed at per ton bid rates. The State recognizes that a percentage of delivered wood may not meet the log manufacturing and recovery standards of the Timber Sale Contract. The actual percentage will vary based on the log manufacturing and recovery specifications of the purchaser and tree conditions in the sale area. The actual delivered weight may vary, resulting in an overrun or under-run of the estimated tonnage. The State strongly recommends that bidders evaluate these effects before bidding.
10. The State does not conduct detailed road appraisals. All appraised costs are gross estimates or averages, provided only to show the relative amount of work required, and not the true market value. The State strongly recommends that bidders make their own estimates based on Contract requirements. Cost estimates provided are not guaranteed.
11. Bidders are encouraged to examine the complete Timber Sale Package and Sale Area prior to bidding. Additional information is available at the phone numbers shown above.
12. Estimates for sale volume, species percents, defect, product class, etc. provided in this prospectus and volume estimates listed in the Timber Sale Contract are not guaranteed.
13. This prospectus is provided for information purposes only. If the prospectus is in error or contradicts the Timber Sale Contract, the Contract governs.

**Additional Sale Information:**

1. Purchaser will designate leave and cut trees based on the following specifications:

a) Commercial Thin/Sanitation: Units 1, 2, 3

Select favored species for leave trees on a 20-25 foot spacing. Leave approximately 70 dominant trees per acre where available.

- Favor retention of healthy, dominant western larch, ponderosa pine, and Douglas-fir.
- Remove trees infected with dwarf mistletoe, insects, or stem/root rots. Douglas-fir bark beetles are the main concern.
- Retain an average of 2 trees/acre of larger diameter size classes as snag recruits.
- Retain a minimum of 2 large diameter (21 inches D.B.H or greater) snags per acre.

b) Overstory Removal Specifications: Unit 4

- Maintain a maximum spacing of 100 feet between leave trees (measured between tree boles). This will leave approximately 4 to 6 trees per acre.
- Favored leave tree species in order: Ponderosa pine, western larch, Douglas-fir.
- Cut all dwarf mistletoe infested merchantable trees.
- Cut all bark beetle infested merchantable trees.
- Protect all insect and disease-free regeneration.
- Retain an average of 2 trees/acre of larger diameter size classes as snag recruits.
- Retain a minimum of 2 large diameter (21 inches D.B.H or greater) snags per acre.

c) If the Purchaser fails to meet the prescription, the Forest Officer will suspend cutting operations and the Purchaser may be required to mark leave trees and have marking approved by the Forest Officer prior to resuming harvest.

2. No harvest activities may occur inside the ¼ mile buffer circle (see unit map in Attachment A) from April 1 thru August 15. This includes road work, harvest operations, and log hauling operations. This restriction may be waived by the wildlife biologist if the nest is determined to be unoccupied. Also, no harvesting will occur within 100 feet of the nest.
3. The sale will be accessed from Browns Meadow Road. A gate will access private land for 2.5 miles of the main haul route before entering state land. The combination for the gate will be 2264. Gate may remain open during hauling operations.
4. There will be a separate bid for sawlogs and ponderosa pine sawlogs. Ponderosa pine will have a \$1 minimum, and all sawlogs will be charged the forest improvement rate of \$3.76/ton.
5. Optional: non-sawlog material may be charged a rate of \$1/ton.

**Timber Sale Information Sheet**  
**Montana Department of Natural Resources and Conservation**

<b>Browns Ranch</b>											
<b>Timber Sale Cruise Data (Scribner 5.6" top DIB, Filter: All   All   Cut)</b>											
SPECIES	PP	DF	WL								
Minimum Bid per ton	<b>\$1.00</b>	<b>\$19.40</b>									
Pounds per cubic foot	62.0	61.7	58.3								
Estimated tons of sawlogs	5217	8481	1809								<b>15,507 tons</b>
Estimated tons of non-sawlog material	60	134	40								234 tons
Gross MBF	849	1234	306								<i>2,389 MBF</i>
% Cull and Breakage	10.9	5.8	9.8								8.1%
Net MBF	757	1163	276								2,195 MBF
Average logs per MBF	19.7	21.9	23.9								21.4 logs/MBF
Average DBH	13.2	12.4	11.5								12.5 in.
Average tons to cut per acre	→										27 tons/ac
Average MBF to cut per acre	→										3.8 MBF/ac
Total Average TPA Cut	→										46
Calculated Sampling Error: Total cruised volume will fall between	1,881 and 2,508 Net MBF in 9 out of 10 cruises										14.3%
<b>Tons Per Thousand Board Feet</b>											
Conversion Factor - Estimated tons hauled per thousand Scribner board feet	15,507 estimated tons / 2,195 Net MBF										7.07 tons/MBF

<b>Contract Information</b>	
Contract Termination Date:	11/1/2025
Operating Period:	When soil and site conditions allow; Red Tailed Hawk Timing Restrictions for portions of Unit 1

**Timber Sale Information Sheet**  
**Montana Department of Natural Resources and Conservation**

<b>Logging Information</b>	
% of volume logged by clearcut or seed tree cut	00%
% of volume logged with tractors	100%
% of volume logged by skyline	00%
% of volume logged by other system (specify)	00%
Yarding distance tractor (average)	850 ft.
Yarding distance skyline (average)	0 ft.
Yarding distance other system (specify)	0 ft.
Estimated haul distance (paved)	21.0 miles
Estimated haul distance (unpaved)	14.4 miles

<b>Purchaser fees and estimated costs</b>	
Forest Improvement fee perMBF	\$26.60/MBF
Forest Improvement fee per ton	\$3.76/ton
Forest Improvement fee estimated total	\$58,306.32
Forest Improvement fee quarterly installment	\$9,717.72
Estimated Purchaser-do FI total \$	\$0
Estimated Purchaser-do FI per ton	\$0.00/ton
Estimated Purchaser-do slash disposal work total	\$0.00
Estimated Purchaser-do slash disposal work per ton	\$0.00/ton

<b>Road development and maintenance fees and estimates</b>	
Estimated road development cost total	\$10,959
Estimated road development cost per ton	\$0.71/ton
Estimated road development cost perMBF	\$4.99/MBF
Estimated Purchaser-do road maintenance cost total	\$9,800
Estimated Purchaser-do road maintenance cost per ton	\$0.63/ton
Private road maintenance charges per ton	\$0.00/ton
USFS road maintenance charges per ton	\$0.00/ton
Miles of road construction	0.0 miles
Miles of road reconstruction	0.0 miles
Miles of road with site improvements	8.4 miles
Miles of road reclamation or abandonment	0.0 miles
Miles of road maintenance and blading	8.4 miles

<b>Unit harvest volume</b>				
Unit #	Acres	Est Tons	Est MBF	Harvest Deadline
Cutting Unit 1	247	5904	836	September 15, 2025
Cutting Unit 2	37	839	119	September 15, 2025
Cutting Unit 3	124	3177	450	September 15, 2025
Cutting Unit 4	167	5587	791	September 15, 2025
	575 Ac.	15,507 tons	2,195 MBF	

# State Trust Land Vicinity Map

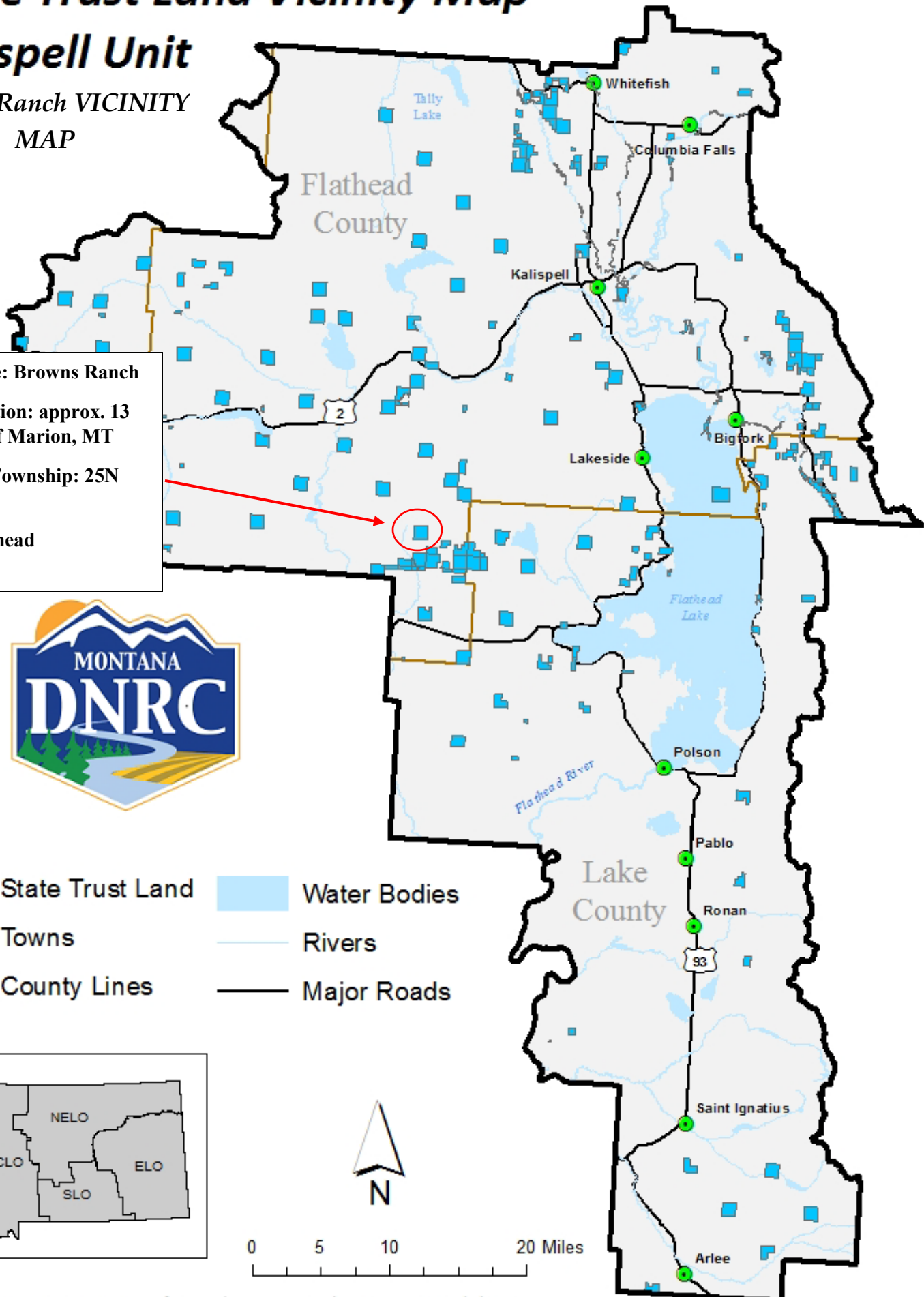
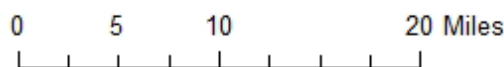
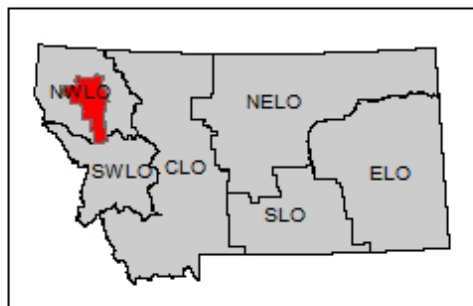
## Kalispell Unit

Browns Ranch VICINITY  
MAP

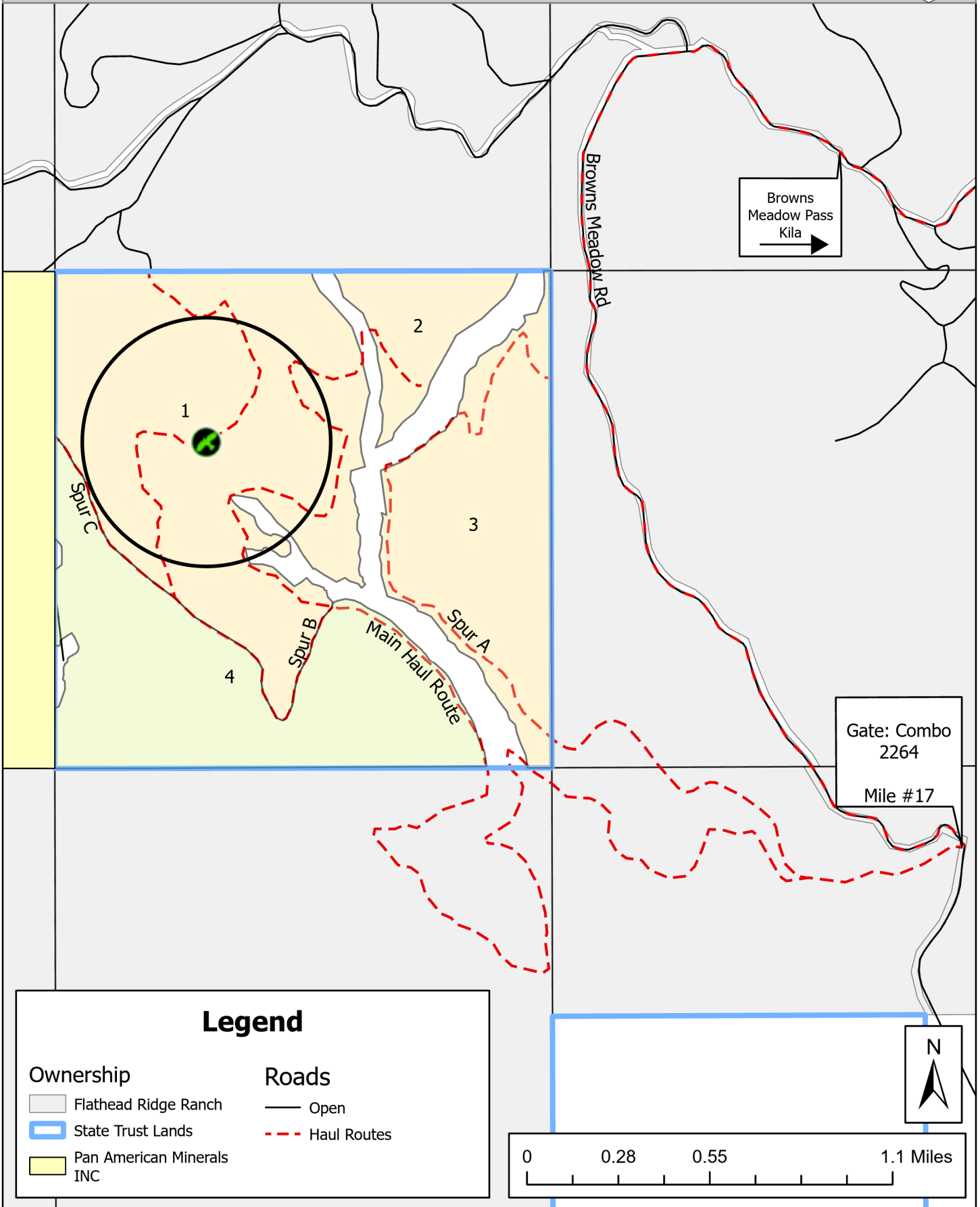
**Project Name:** Browns Ranch  
**Project Location:** approx. 13 miles south of Marion, MT  
**Section:** 16 **Township:** 25N  
**Range:** 23W  
**County:** Flathead



- State Trust Land
- Water Bodies
- Towns
- Rivers
- County Lines
- Major Roads



# Browns Ranch Timber Sale Haul Route Section 16, T25N R23W



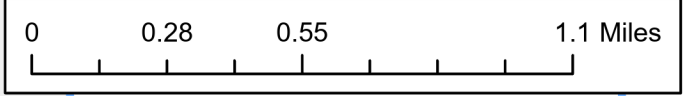
## Legend

### Ownership

- Flathead Ridge Ranch
- State Trust Lands
- Pan American Minerals INC

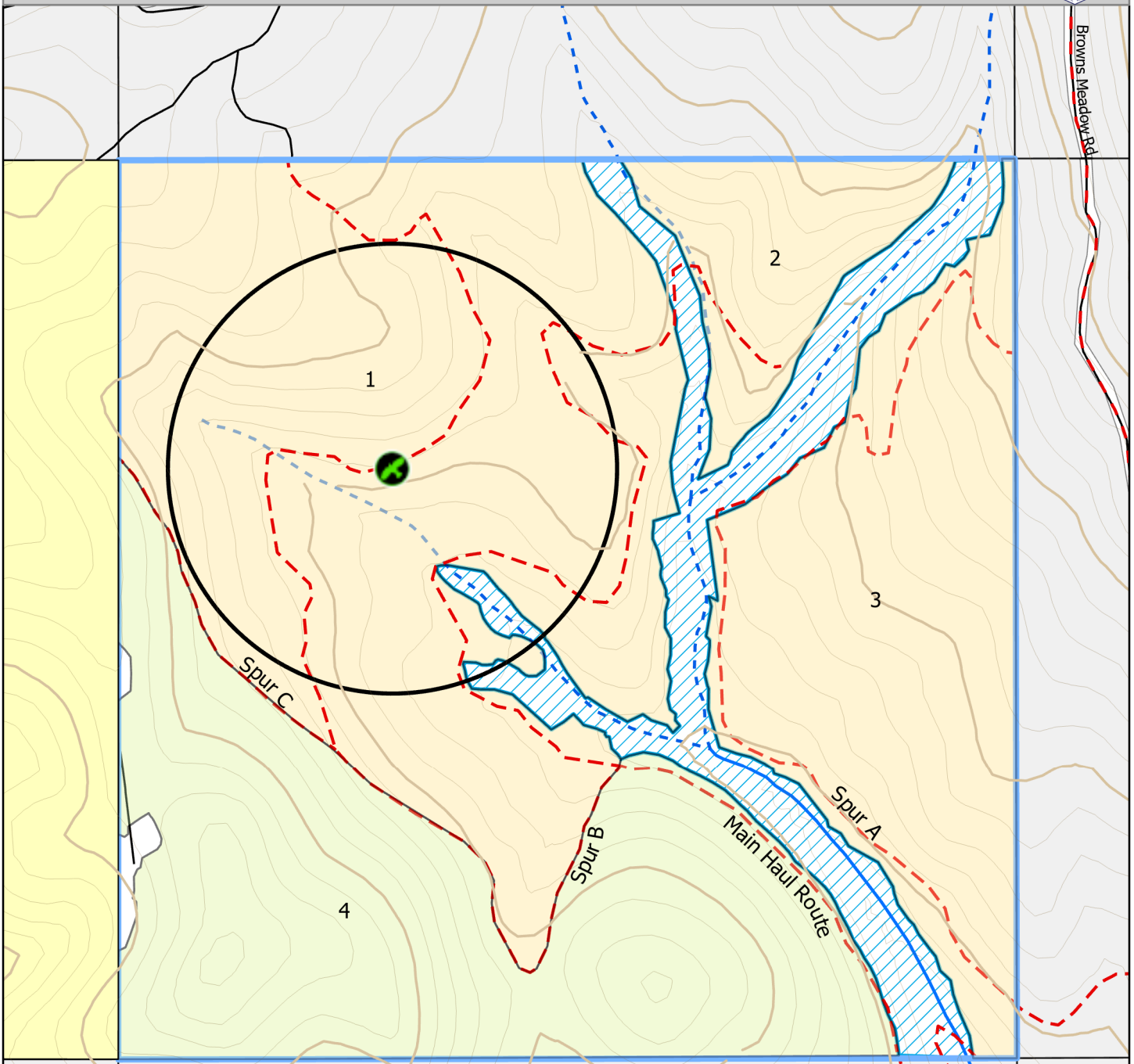
### Roads

- Open
- Haul Routes



# Browns Ranch Timber Sale Harvest Units

## Section 16, T25N R23W



### Legend

#### Ownership

- Flathead Ridge Ranch
- State Trust Lands
- Pan American Minerals INC

#### Harvest Units

- Overstory Removal
- Commercial Thin

#### Roads

- Open

#### Haul Routes

#### Streams

- Haul Routes
- Class 1
- Class 2
- Class 3
- SMZ

- Hawk Nest

- Nest Buffer

