

## NOTICE OF SALE

### Department of Natural Resources & Conservation Timber Sale

The **Fry Bear Timber Sale** is located within Sections 21, 22, 26, 27, 28, and 36 of T10S-R15W Dillon Unit. Approximately 8,006 tons, consisting of mixed conifer sawlogs, are offered for sale.

Sealed bids will be opened at the Department of Natural Resources & Conservation, 2705 Spurgin Road, Missoula, Montana on **June 30, 2022 at 2:00 p.m.** Bids may be hand delivered or mailed and will be accepted any time prior to the bid opening. DNRC recommends that bidders contact the Trust Land Management Division (406-542-4300) prior to the bid opening to ensure that your bid has been received. Bids must be accompanied by a deposit of **\$1,885.00**, representing 5% of the minimum bid value of the sale in cashier's check, certified check, bank money order or bank draft to be applied to the first sale invoice for the successful bidder. Bid bonds will be accepted and, for the successful bidder, will be closed upon execution of the Timber Sale Contract and Timber Sale Bond.

The sale will be awarded to the highest responsible bidder. If the successful bidder is unable to execute the contract within **30** calendar days from the date the sale is awarded, the bid deposit will be retained by the Department as liquidated damages. The right is reserved to reject any or all bids.

Prospective bidders can obtain the sale prospectus, sale contract and bid forms from the Department of Natural Resources & Conservation, Trust Land Management Division, in Missoula (406-542-4300) or the Dillon Unit Office (406-683-6305).

Visit our website at <http://dnrc.mt.gov/divisions/trust/forest-management/timber-sale-information> for upcoming sales and bid results.

**TIMBER SALE PROSPECTUS**  
**STATE OF MONTANA DEPARTMENT OF NATURAL RESOURCES AND CONSERVATION**

<b>Timber Sale Name: Fry Bear Timber Sale</b>			
<b>For specific sale information, contact: Riley Stevenson</b>			
Phone	406-683-6305	Dillon Unit Office	
<b>For copies of the Timber Sale Contract and bid forms, contact:</b>			
Phone	406-542-4300	Forest Management Bureau	DNRC Missoula Office
Phone	406-458-3500	Central Land Office	

**General Bidding Information**

1. Bids must be submitted on Department of Natural Resources & Conservation (State) bid forms.
2. Timber will be sold to the highest responsible bidder; however, the State reserves the right to reject any or all bids.
3. The State recommends that bidders contact the Forest Management Bureau, Trust Land Management Division (406-542-4300) prior to the bid opening to ensure that your bid has been received.
4. A **Bid Deposit** must accompany all bids and must be in the form of cash, cashiers check, certified check, money order, bank draft, surety bond or irrevocable letter of credit.
5. The Purchaser must submit a **Performance Bond** to the State within 30 days of notification of sale award. The bond amount will be, at a minimum, 20% of the total bid value of the sale. The performance bond may be cash, irrevocable letter of credit, surety bond or certificate of deposit. The performance bond must be maintained separately from other payments for the duration of the Timber Sale Contract. See the Timber Sale Contract for additional information.
6. The purchaser must submit an **Advance Stumpage Payment** prior to cutting any timber. The amount of the advance stumpage payment will cover six weeks of harvesting and be based on the expected harvest rate and the bid value of the stumpage. The advance stumpage payment may be cash, irrevocable letter of credit, payment bond or certificate of deposit.
7. At rates specified in the Contract, the purchaser will pay **Forest Improvement Fees** on all sawlog volume. All applicable **Road Use and/or Maintenance fees** will also be paid by the Purchaser in addition to stumpage payments.
8. This sale is being sold based on the gross weight of all species. Minimum price and bid price are on a per ton basis. Unless otherwise specified, the price applies to all species, green and dead. Price may vary by product. Billing will be based on gross weight. A weight ticket from a certified scale is required for each load hauled, regardless of product type.
9. The State has estimated the net scale merchantable sawlog volume to be sold under this Contract. Other products may be part of this sale. All delivered wood will be weighed and billed at per ton bid rates. The State recognizes that a percentage of delivered wood may not meet the log manufacturing and recovery standards of the Timber Sale Contract. The actual percentage will vary based on the log manufacturing and recovery specifications of the purchaser and tree conditions in the sale area. The actual delivered weight may vary, resulting in an overrun or under-run of the estimated tonnage. The State strongly recommends that bidders evaluate these effects before bidding.
10. The State does not conduct detailed road appraisals. All appraised costs are gross estimates or averages, provided only to show the relative amount of work required, and not the true market value. The State strongly recommends that bidders make their own estimates based on Contract requirements. Cost estimates provided are not guaranteed.
11. Bidders are encouraged to examine the complete Timber Sale Package and Sale Area prior to bidding. Additional information is available at the phone numbers shown above.
12. Estimates for sale volume, species percents, defect, product class, etc. provided in this prospectus and volume estimates listed in the Timber Sale Contract are not guaranteed.
13. This prospectus is provided for information purposes only. If the prospectus is in error or contradicts the Timber Sale Contract, the Contract governs.

**Additional Sale Information:**

**Special Operating Requirements:**

1. OPERATIONAL TIMING RESTRICTRIONS: All harvest and hauling operations will be prohibited from April 1<sup>st</sup> to July 1<sup>st</sup>.
2. RESERVED SUBMERCHANTABLE TREE PROTECTION: Care shall be exercised in felling and skidding operations to minimize damage to submerchantable trees. If damage is excessive as determined by the Forest Officer, operations may be suspended until suitable arrangements are made to reduce damage.
3. HARVEST OF BLOWDOWN: The purchaser will be required to all harvest blowdown that occurs at a rate of 2.5 mbf per acre or more. This includes blowdown, green or dead, containing sawlogs or post and rail or firewood material that meet standards shown in Section VII., Table 2.
4. SLASH REDUCTION: In the event slash accumulations within the harvest unit exceeds DNRC recommended maximum fuel loading specifications (during harvest or upon completion), Purchaser may be required to spot pile, lop, trample or yard excessive material to landing piles. Woody debris (slash) consists of dead and green material that has occurred naturally or from harvest operations. Fuel loading determination is based on slash size class, weight (tons per acre), and slope that will result in a maximum flame length of 4' with ignition. All areas determined to exceed desired fuel loads greater than 2 acres may be designated for treatment. The Montana DNRC Photo Series Handbook for Appraising Timber Slash in Montana will be used to evaluate slash hazard conditions for this sale activity. Portions of units within 100 feet of property boundaries, public access roads, railroads and powerline corridors must meet the 4-foot flame length standard. The 4-foot fame length standard is defined as 90% of the area logging slash being reduced to a level at which a fire starting under conditions similar to a "Standard Day" (87 degrees, 17% RH, 12 mph wind speed) would burn with a flame length of 4 feet or less as calculated by the BEHAVE model.

**Compensation to Landowner for Use of Private Road:**

TABLE 1 – (continued) – ROAD USE AND MAINTENANCE PAYMENTS		
Road Name or Number	Rate	Requirements
Portion of main haul that crosses private property	Two loads of post and poles	The charge for this permit is 2 loads of post and poles delivered to Tom Pulaski's post and pole in Dillon, MT. Permittee will remit the sum of 2 loads of post and rails once operations begin in the LP pine units to the <i>Lemhi Frontier LLC</i> .

**Timber Sale Information Sheet**  
**Montana Department of Natural Resources and Conservation**

<b>Fry Bear</b>											
<b>Timber Sale Cruise Data (Scribner 5.6" top DIB, Filter: All   All   All)</b>											
SPECIES	PP	DF	WL	LP	ES	GF	RC	AF	WP	Dead	TOTAL or AVE
Minimum Bid per ton											\$4.71
Pounds per cubic foot		61.7		56.0	57.0			55.0		40.0	
Estimated tons of sawlogs		4378		2399	639			94		496	<b>8,006 tons</b>
Estimated tons of non-sawlog material		29		179	3			6		10	227 tons
Gross MBF		930		385	128			15		276	1,734 MBF
% Cull and Breakage		29.0		21.0	16.0			20.0		61.4	31.2%
Net MBF		663		305	107			12		107	1,193 MBF
Average logs per MBF		18.2		45.8	16.1			41.2		37.4	26.9 logs/MBF
Average DBH		16.4		8.6	16.1			9.0		13.1	11.5 in.
Average tons to cut per acre	→										53 tons/ac
Average MBF to cut per acre	→										7.9 MBF/ac
Total Average TPA Cut	→										160
Calculated Sampling Error: Total cruised volume will fall between	991 and 1,379 Net MBF in 9 out of 10 cruises										16.4%
<b>Tons Per Thousand Board Feet</b>											
Conversion Factor - Estimated tons hauled per thousand Scribner board feet	8,006 estimated tons / 1,193 Net MBF										6.71 tons/MBF

<b>Contract Information</b>	
Contract Termination Date:	30-Nov-25
Operating Period:	Year round except April 1 - July 1

<b>Logging Information</b>	
% of volume logged by clearcut or seed tree cut	48%
% of volume logged with tractors	100%
% of volume logged by skyline	00%
% of volume logged by other system (specify)	00%
Yarding distance tractor (average)	500 ft.
Yarding distance skyline (average)	0 ft.

<b>Road development and maintenance fees and estimates</b>	
Estimated road development cost total	\$21,765
Estimated road development cost per ton	\$2.72/ton
Estimated road development cost perMBF	\$18.24/MBF
Estimated Purchaser-do road maintenance cost total	\$28,031
Estimated Purchaser-do road maintenance cost per ton	\$3.50/ton

**Timber Sale Information Sheet**  
**Montana Department of Natural Resources and Conservation**

Yarding distance other system (specify)	0 ft.
Estimated haul distance (paved)	130.0 miles
Estimated haul distance (unpaved)	16.0 miles

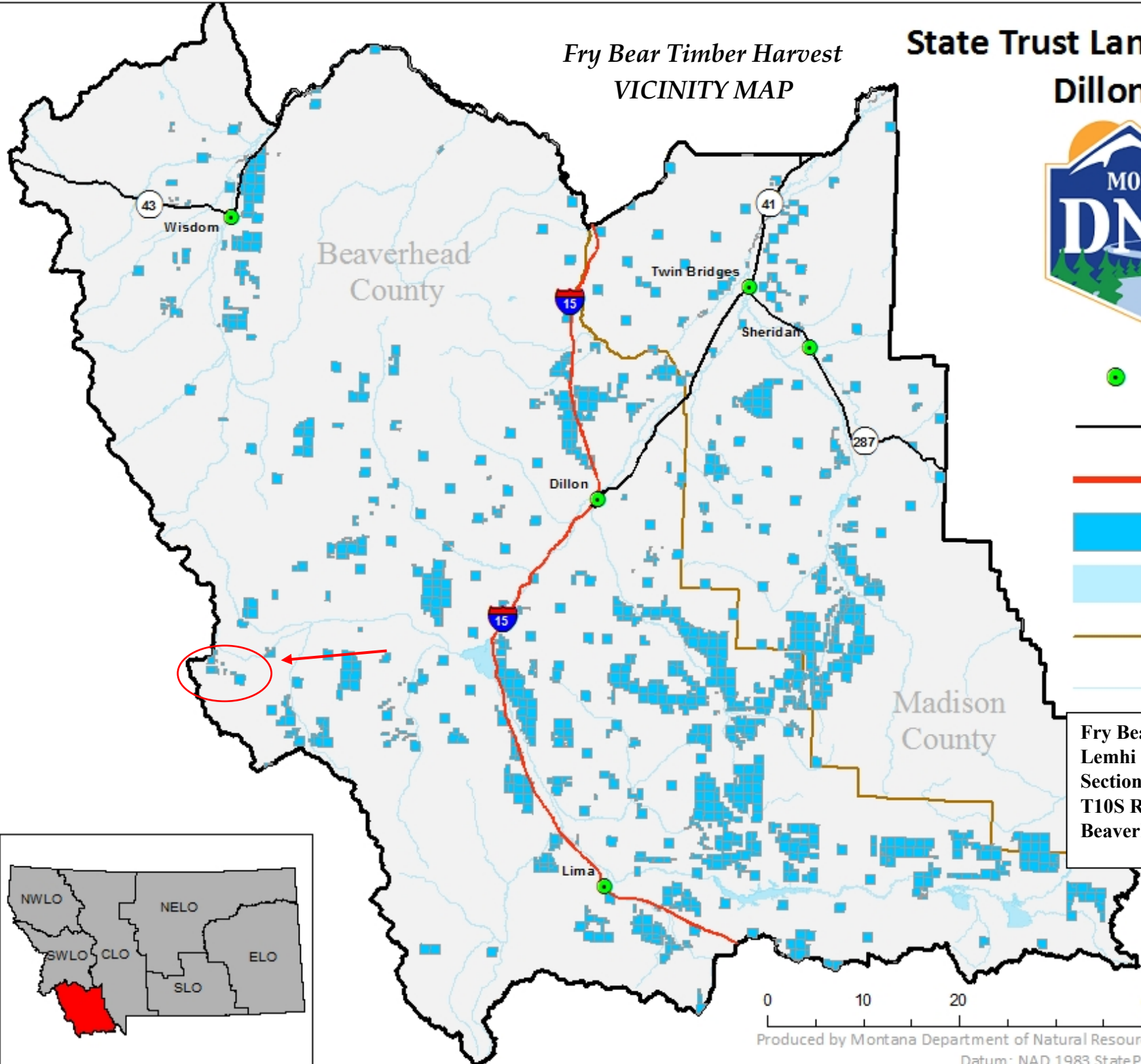
Private road maintenance charges per ton	\$0.00/ton
USFS road maintenance charges per ton	\$0.00/ton
Miles of road construction	0.7 miles
Miles of road reconstruction	0.0 miles
Miles of road with site improvements	0.0 miles
Miles of road reclamation or abandonment	0.7 miles
Miles of road maintenance and blading	20.0 miles

<b>Purchaser fees and estimated costs</b>	
Forest Improvement fee perMBF	\$9.15/MBF
Forest Improvement fee per ton	\$1.36/ton
Forest Improvement fee estimated total	\$10,888.16
Forest Improvement fee quarterly installment	\$1,814.69
Estimated Purchaser-do FI total \$	\$0
Estimated Purchaser-do FI per ton	\$0.00/ton
Estimated Purchaser-do slash disposal work total	\$0.00
Estimated Purchaser-do slash disposal work per ton	\$0.00/ton

<b>Unit harvest volume</b>				
Unit #	Acres	Est Tons	Est MBF	Harvest Deadline
Cutting Unit 1	9	338	50	October 31, 2025
Cutting Unit 2	28	1060	158	October 31, 2025
Cutting Unit 3	8	642	96	October 31, 2025
Cutting Unit 4	7	370	55	October 31, 2025
Cutting Unit 5	9	662	99	October 31, 2025
Cutting Unit 6a	4	159	24	October 31, 2025
Cutting Unit 6b	1	53	8	October 31, 2025
Cutting Unit 7	13	776	116	October 31, 2025
Cutting Unit 8	10	322	48	October 31, 2025
Cutting Unit 9	27	1171	175	October 31, 2025
Cutting Unit 10c	2	49	7	October 31, 2025
Cutting Unit 10a	3	222	33	October 31, 2025
Cutting Unit 10b	4	308	46	October 31, 2025
Cutting Unit 11	6	898	134	October 31, 2025
Cutting Unit 12	20	977	146	October 31, 2025
	151 Ac.	8,006 tons	1,193 MBF	

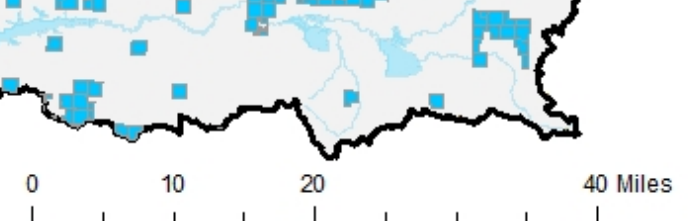
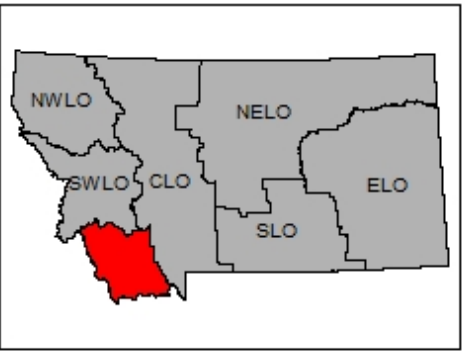
*Fry Bear Timber Harvest*  
VICINITY MAP

**State Trust Land Vicinity Map**  
**Dillon Unit**



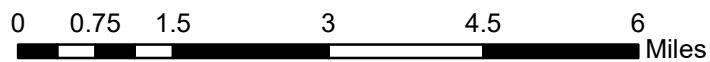
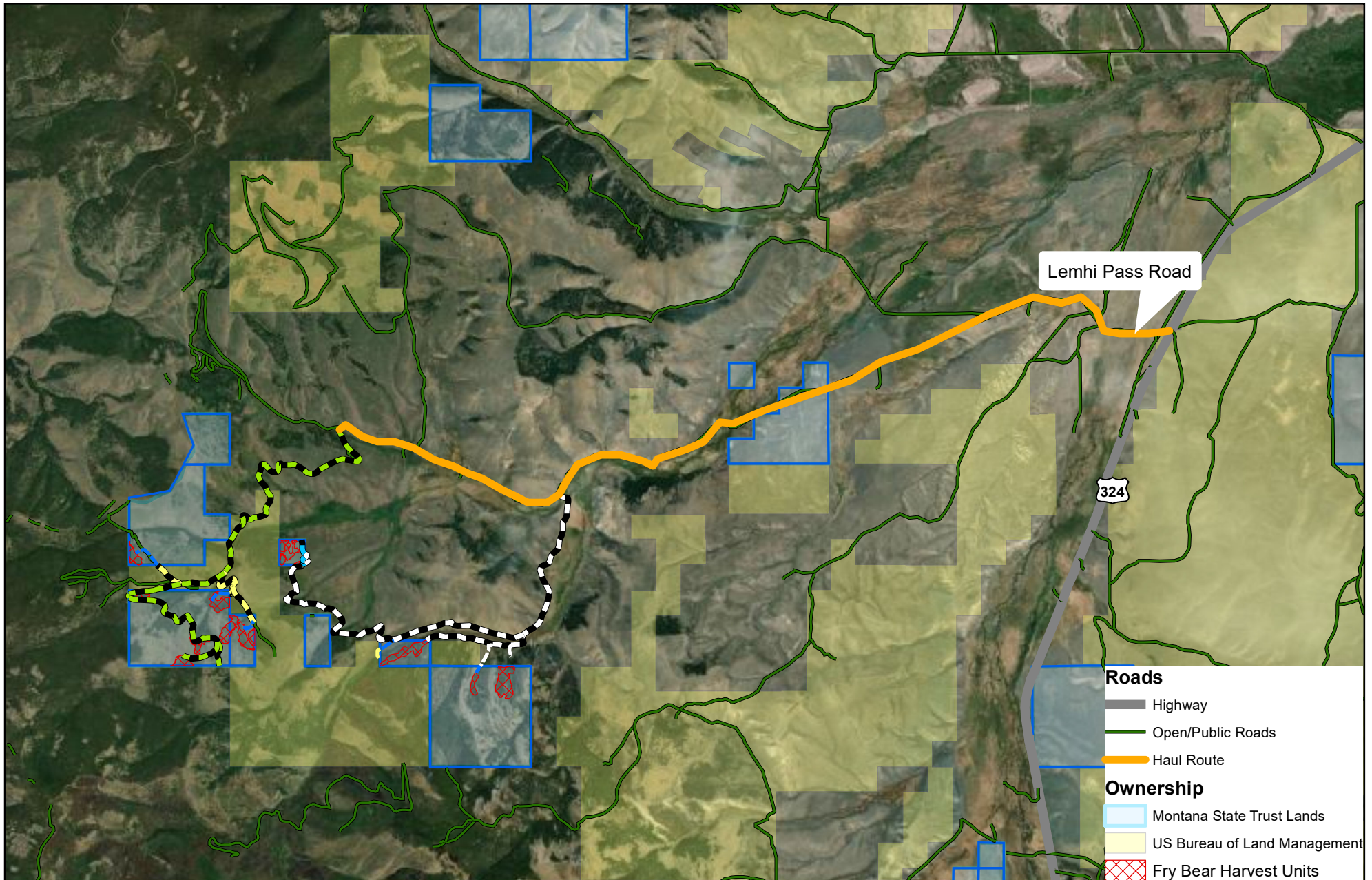
- Towns
- Major Roads
- Interstate
- State Trust Land
- Water Bodies
- County Lines
- Rivers

**Fry Bear Timber Harvest**  
**Lemhi Pass**  
Sections 21, 22, 26, 27, 28 & 36  
T10S R 15W  
Beaverhead County





# Fry Bear Timber Sale Haul Route





# Fry Bear Timber Sale Harvest Map

