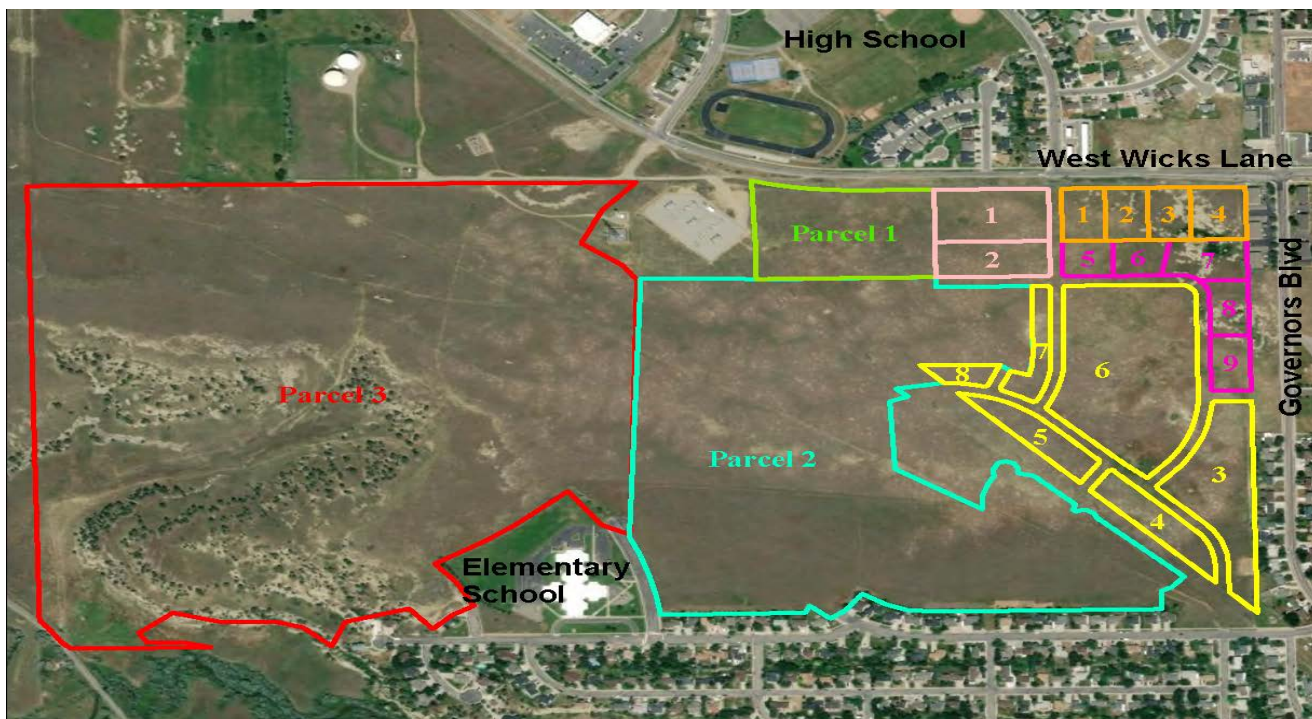




Commercial Land Ground Lease Request for Proposals

• The Montana Department of Natural Resources & Conservation is soliciting proposals to lease approximately 268.01 +/- acres of school trust land in Billings, MT. This RFP was developed with the intent that a Proponent could express an interest in some or all of the lands offered.

• Subject lots are located in the Billings Heights, on the south side of West Wicks Lane just west of Governors Boulevard. Wicks Lane is a principal arterial street and has an Average Daily Traffic (ADT) count of 7,030.



- RFP Response Deadline: August 3, 2022
- Located inside Billings city limits
- Municipal water, sanitary and storm sewer can be extended to lots
- Close proximity to: Eagle Cliffs Elementary, Castle Rock Middle & Skyview High Schools
- In fast growing residential area

Description of Land for Lease in Sec. 20 T1N-R26E.

1. Block 1, Lots 1-4 of Skyview Ridge Sub. 1st Filing.
2. Block 1, Lots 5-9 of Skyview Ridge Sub. 1st Filing.
3. Block 2, Lots 1-2, of Skyview Ridge Sub. 1st Filing.
4. Blocks 3,4,5,6,7,8 of Skyview Ridge Sub. 1st Filing.
5. Hypothetical Parcel 1- 8.75 ac. +/- in NE ¼.
6. Hypothetical Parcel 2 -73.80 ac. +/- in NE ¼.
7. Hypothetical Parcel 3 – 142.1 ac. +/- in NW ¼.

*Response should specify the precise Lots and Blocks included in the proposal.

DNRC Southern Land Office
1371 Rintop Drive
Billings, MT 59105

Joe Holzwarth
Phone: 406-247-4401
E-mail:
jholzwarth@mt.gov

Additional information available at:
<http://dnrc.mt.gov/leasing>

