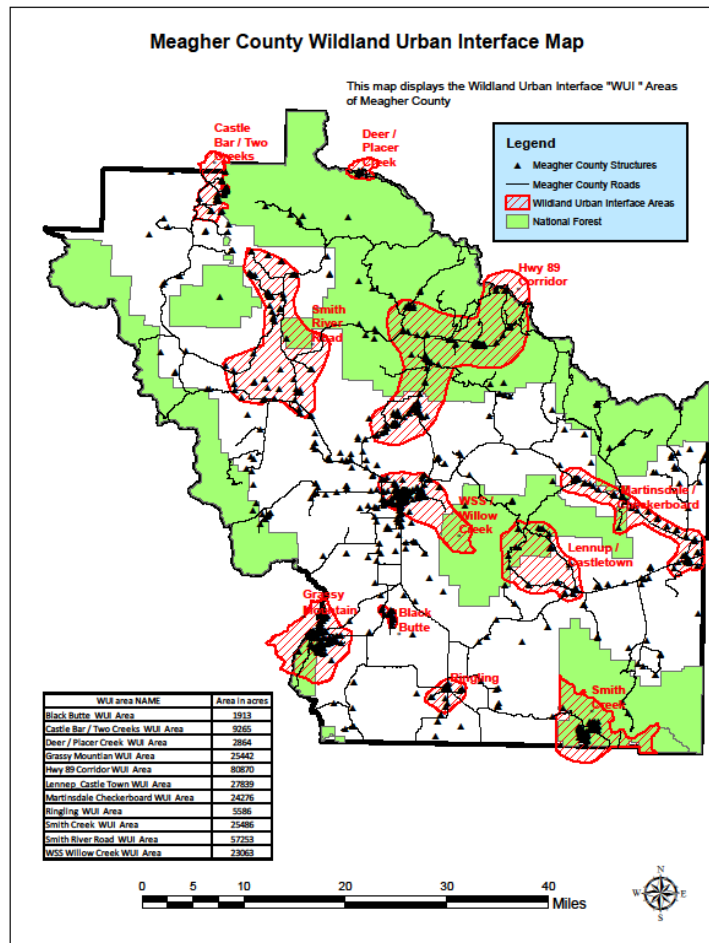


# Meagher County Wildfire Protection Plan 2014

## 5. g. Meagher County's Wildland Urban Interface Area

The wildland urban interface (WUI) has gained attention through efforts targeted at wildfire mitigation; however, this analysis technique is also useful when considering other hazards, because the concept looks at where people and structures are concentrated in any particular region. (See “Meagher County Wildland Urban Interface Map” Appendix-Map for page size map)



A key component in meeting the underlying need for protection of people and structures is the treatment of hazards in the wildland-urban interface. The wildland-urban interface, or WUI, refers to areas where wildland vegetation meets urban developments or where forest fuel meet urban fuel such as houses. The WUI encompasses not only the interface (areas immediately adjacent to urban development), but also the surrounding vegetation and topography. Reducing the hazard in the WUI requires the efforts of federal, state, and local agencies, as well as private individuals. Structural fire protection during a wildfire in the wildland-urban interface is largely the responsibility of Tribal, state, and local governments. Property owners share a responsibility to protect their residences and businesses and

minimize danger to firefighters by creating defensible areas around them as well as by taking other measures to minimize the risks to their structures. With treatment, a wildland-urban interface can provide firefighters a defensible area from which to suppress wildland fires or defend communities against other hazard risks. In addition, a wildland-urban interface that is properly treated will be less likely to sustain a crown fire that enters or originates within it.

By reducing hazardous fuel loads, ladder fuel, and tree densities, and creating new and reinforcing existing defensible space, landowners can protect the wildland-urban interface, the biological resources of the management area, and adjacent property owners by:

- Minimizing the potential of high-severity ground or crown fires entering or leaving the area;
- Improving defensible space in the immediate areas for suppression efforts in the event of wildland fire;