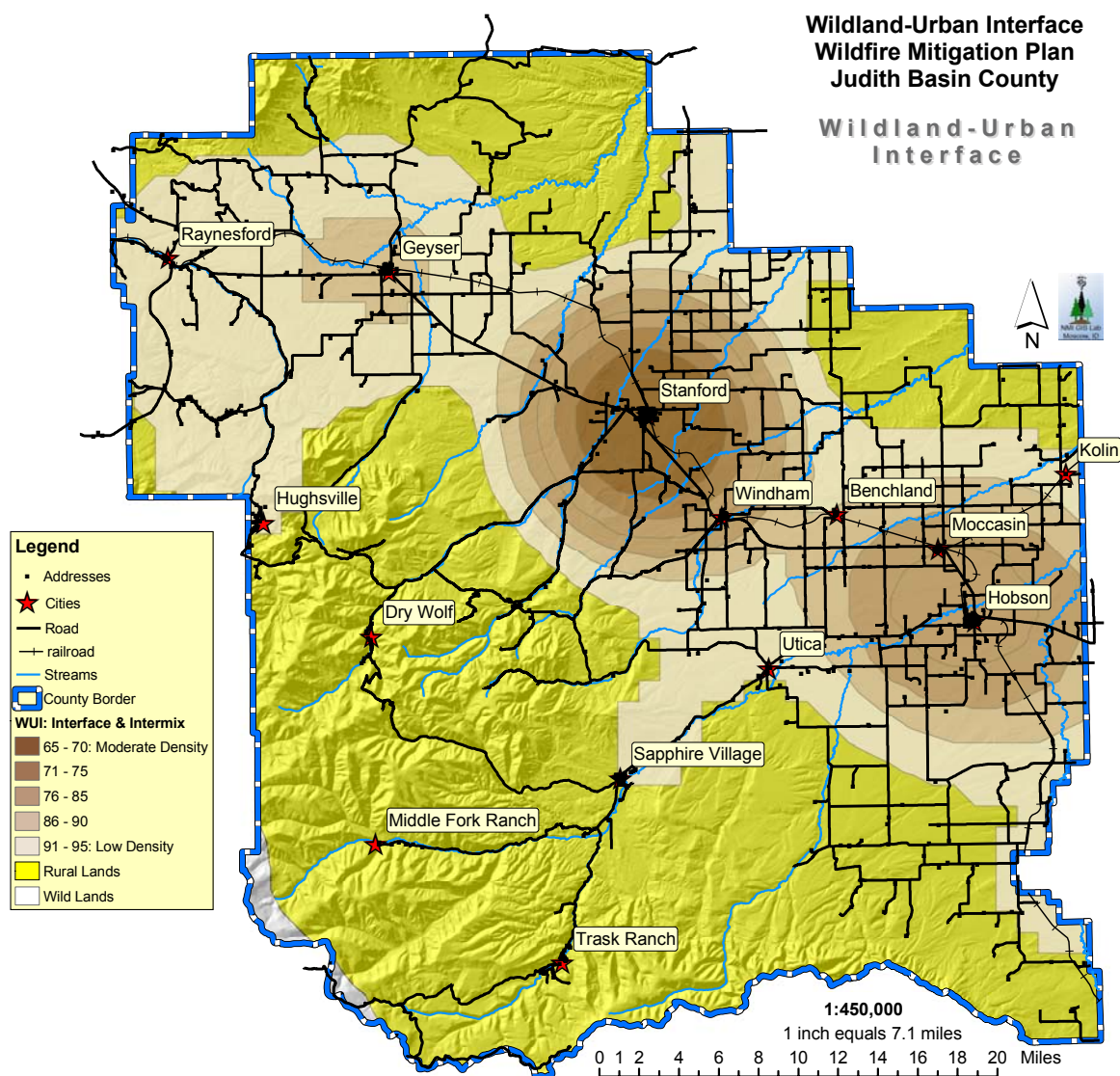


Figure 3.5. Wildland-Urban Interface of Judith Basin County, Montana.



This map is presented for reference in this section of the plan. This map and additional maps are detailed in Appendix I.

3.10.2 Infrastructure

Judith Basin County has both significant infrastructure and unique ecosystems within its boundaries. Of note for this WUI Fire Mitigation Plan is the existence of highway routes (eg., State Highways 200 and 244), oil fields, and the presence of power lines supplying surrounding counties. These resources will be considered in the protection of infrastructural resources for Judith Basin County and to the larger extent of this region, and the rest of Montana.

High Tension Power Lines have been mapped and are presented in Appendix I. Protection of these lines from loss during a wildfire is paramount in as much as the electrical power they provide serves not only the communities of Judith Basin County but of surrounding counties. The protection of these lines allows for community sustainability, support of the economic viability of Judith Basin County, and the protection of people who rely on that power. Fuels