

## NOTICE OF SALE

### **Department of Natural Resources & Conservation Timber Sale**

The Game On Timber Sale is located within Section 36, T13N-R17W, Section 31, T13N-R16W, Section 2, T12N-R17W on the State's Missoula Unit. Approximately 15,264 tons, consisting of mixed conifer sawlogs, are offered for sale.

Sealed bids will be opened at the Department of Natural Resources & Conservation, 2705 Spurgin Road, Missoula, Montana on **September 23, 2025 at 2:00 p.m.** Bids may be hand delivered or mailed and will be accepted any time prior to the bid opening. DNRC recommends that bidders contact the Trust Land Management Division (406-542-4300) prior to the bid opening to ensure that your bid has been received. **Bids must be accompanied by a deposit of \$6,365.00**, representing 5% of the minimum bid value of the sale in cashier's check, certified check, bank money order or bank draft to be applied to the first sale invoice for the successful bidder. Bid bonds will be accepted and, for the successful bidder, will be closed upon execution of the Timber Sale Contract and Timber Sale Bond.

The sale will be awarded to the highest responsible bidder. If the successful bidder is unable to execute the contract within **30** calendar days from the date the sale is awarded, the bid deposit will be retained by the Department as liquidated damages. The right is reserved to reject any or all bids.

Prospective bidders can obtain the sale prospectus, sale contract and bid forms from the Department of Natural Resources & Conservation, Trust Land Management Division, in Missoula (406-542-4300).

Visit our website at <https://dnrc.mt.gov/Forestry/Forest-Products/timber-sales> for upcoming sales and bid results.

**TIMBER SALE PROSPECTUS**  
**STATE OF MONTANA DEPARTMENT OF NATURAL RESOURCES AND CONSERVATION**

<b>Timber Sale Name:   Game On TS</b>			
<b>Timber Sale Location:   Section 36 T13N R17W, Section 31 T13N R16W, Section 2 T12N R17W</b>			
<b>For specific sale information, contact: Scott Allen</b> Forest Management Supervisor			
Phone	406-542-5803	Unit Office Missoula Unit	
<b>For copies of the Timber Sale Contract and bid forms, contact:</b>			
Phone	406-542-4300	Forest Management Bureau	DNRC Missoula Office
Phone	406-542-4200	Southwestern Land Office	Land Office

**General Bidding Information**

1. Bids must be submitted on Department of Natural Resources & Conservation (State) bid forms.
2. Timber will be sold to the highest responsible bidder; however, the State reserves the right to reject any or all bids.
3. The State recommends that bidders contact the Forest Management Bureau, Trust Land Management Division (406-542-4300) prior to the bid opening to ensure that your bid has been received.
4. A **Bid Deposit** must accompany all bids and must be in the form of cash, cashiers check, certified check, money order, bank draft, surety bond or irrevocable letter of credit.
5. The Purchaser must submit a **Performance Bond** to the State within 30 days of notification of sale award. The bond amount will be, at a minimum, 20% of the total bid value of the sale. The performance bond may be cash, irrevocable letter of credit, surety bond or certificate of deposit. The performance bond must be maintained separately from other payments for the duration of the Timber Sale Contract. See the Timber Sale Contract for additional information.
6. The purchaser must submit an **Advance Stumpage Payment** prior to cutting any timber. The amount of the advance stumpage payment will cover six weeks of harvesting and be based on the expected harvest rate and the bid value of the stumpage. The advance stumpage payment may be cash, irrevocable letter of credit, payment bond or certificate of deposit.
7. At rates specified in the Contract, the purchaser will pay **Forest Improvement Fees** on all sawlog volume. The Purchaser agrees to make these payments concurrently with stumpage payments. All applicable **Road Use and/or Maintenance fees** will also be paid by the Purchaser in addition to stumpage payments.
8. This sale is being sold based on the gross weight of all species. Minimum price and bid price are on a per ton basis. Unless otherwise specified, the price applies to all species, green and dead. Price may vary by product. Billing will be based on gross weight. A weight ticket from a certified scale is required for each load hauled, regardless of product type.
9. The State has estimated the net scale merchantable sawlog volume to be sold under this Contract. Other products may be part of this sale. All delivered wood will be weighed and billed at per ton bid rates. The State recognizes that a percentage of delivered wood may not meet the log manufacturing and recovery standards of the Timber Sale Contract. The actual percentage will vary based on the log manufacturing and recovery specifications of the purchaser and tree conditions in the sale area. The actual delivered weight may vary, resulting in an overrun or under-run of the estimated tonnage. The State strongly recommends that bidders evaluate these effects before bidding.
10. The State does not conduct detailed road appraisals. All appraised costs are gross estimates or averages, provided only to show the relative amount of work required, and not the true market value. The State strongly recommends that bidders make their own estimates based on Contract requirements. Cost estimates provided are not guaranteed.
11. Bidders are encouraged to examine the complete Timber Sale Package and Sale Area prior to bidding. Additional information is available at the phone numbers shown above.
12. Estimates for sale volume, species percents, defect, product class, etc. provided in this prospectus and volume estimates listed in the Timber Sale Contract are not guaranteed.
13. This prospectus is provided for information purposes only. If the prospectus is in error or contradicts the Timber Sale Contract, the Contract governs.

**Additional Sale Information:**

1. **PROSPECTIVE BIDDERS ARE STRONGLY ENCOURAGED TO VISIT TIMBER SALE AREA.** Arrangements can be made with Scott Allen, Missoula Unit DNRC (406) 542-5803; for tours or access information **PRIOR** to visiting sale area.
2. **ALTERNATE YARDING SYSTEMS MAY BE APPROVED:** The Forest Officer may approve alternative yarding methods besides those specified for each sale unit. An alternative system proposed by the Purchaser must be approved by the Forest Officer at or before the time the Logging Operations Plan for the unit is approved. The Forest Officer will only approve alternatives that are consistent with planned mitigation and resource protection measures.
3. **NON-SAWLOG:** All unhealthy trees with poor crowns greater than 5" DBH but not meeting sawlog recovery standards, and that are not designated to leave, will be cut and then using a combination of: cut into a pulp log, skidded to a landing pile or slashed within the unit. Dead trees >8" DBH can be left in units as additional wildlife trees.

**Timber Sale Information Sheet**  
**Montana Department of Natural Resources and Conservation**

Game On												
Timber Sale Cruise Data (Scribner 5.6" top DIB, Filter: All   All   Cut)												
SPECIES	PP	DF	WL	LP	ES	GF	RC	AF	WP	WH	Dead	TOTAL or AVE
Minimum Bid per ton												\$8.34
Pounds per cubic foot		55.0	58.3	56.0	57.0			55.0			40.0	
Estimated CF		317315.5	118751.8	82765.5	22275.4			78302.8			23611.9	643,023 CF
Estimated CF of non-sawlog material		6849.4	2259.6	10032.2	309.4			3471.9			617.4	23,540 CF
Estimated tons of sawlogs		7313	3035	2173	567			1774			401	<b>15,264 tons</b>
Estimated tons of non-sawlog material		0	0	0	0			0			0	0 tons
Gross MBF		1218	508	263	94			285			87	2,455 MBF
% Cull and Breakage		16.3	12.5	6.1	10.7			17.7			15.1	14.3%
Net MBF		1020	444	247	84			235			74	2,103 MBF
Average logs per MBF		27.2	24.3	46.8	23.5			36.3			30.6	29.9 logs/MBF
Average DBH		11.3	11.6	7.8	12.9			9.7			11.0	10.2 in.
Average tons to cut per acre												32 tons/ac
Average MBF to cut per acre												4.4 MBF/ac
Total Average TPA Cut												127
Calculated Sampling Error: Total cruised volume will fall between												12.6%
												1,838 and 2,367 Net MBF in 9 out of 10 cruises
Tons Per Thousand Board Feet												
Conversion Factor - Estimated tons hauled per thousand Scribner board feet												7.26 tons/MBF
												15,264 estimated tons / 2,103 Net MBF

Contract Information		
Contract Termination Date:	1/15/2028	
Operating Period:	Year-round when soil conditions allow	

**Timber Sale Information Sheet**  
**Montana Department of Natural Resources and Conservation**

Logging Information	
% of volume logged by clearcut or seed tree cut	00%
% of volume logged with tractors	51%
% of volume logged by skyline	00%
% of volume logged by other system (tether system approved)	49%
Yarding distance tractor (average)	500 ft.
Yarding distance skyline (tether system approved)	0 ft.
Yarding distance other system (specify)	500 ft.
Estimated haul distance (paved)	69.0 miles
Estimated haul distance (unpaved)	15.0 miles

Purchaser fees and estimated costs	
Forest Improvement fee perMBF	\$21.75/MBF
Forest Improvement fee per ton	\$3.00/ton
Forest Improvement fee estimated total	\$45,792.00
Forest Improvement fee quarterly installment	\$7,632.00
Estimated Purchaser-do FI total \$	\$0
Estimated Purchaser-do FI per ton	\$0.00/ton
Estimated Purchaser-do slash disposal work total	\$23,950.00
Estimated Purchaser-do slash disposal work per ton	\$1.57/ton

Road development and maintenance fees and estimates	
Estimated road development cost total	\$0
Estimated road development cost per ton	\$0.00/ton
Estimated road development cost perMBF	\$0.00/MBF
Estimated Purchaser-do road maintenance cost total	\$18,949
Estimated Purchaser-do road maintenance cost per ton	\$1.24/ton
Private road maintenance charges per ton	\$0.00/ton
USFS road maintenance charges per ton	\$0.00/ton
Miles of road construction	0.0 miles
Miles of road reconstruction	0.0 miles
Miles of road with site improvements	0.0 miles
Miles of road reclamation or abandonment	0.0 miles
Miles of road maintenance and blading	26.8 miles

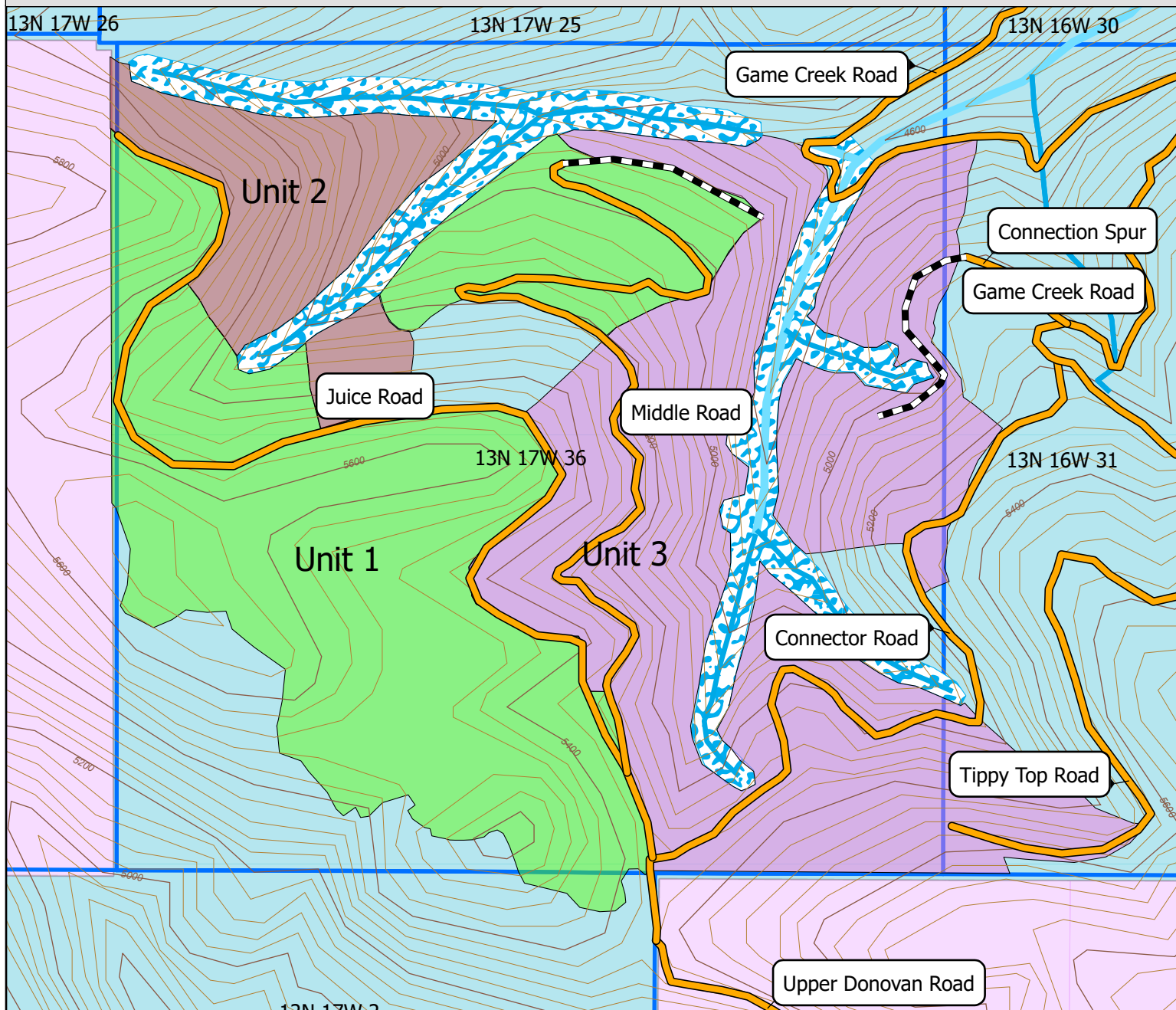
Unit harvest volume				
Unit #	Acres	Est Tons	Est MBF	Harvest Deadline
Unit 1	212	7728	1065	December 1, 2027
Unit 2	52	1595	220	December 1, 2027
Unit 3	215	5941	818	December 1, 2027
	479 Ac.	15,264 tons	2,103 MBF	



# Game On Timber Sale

## Attachment A-1

Section 36 T13N R17W, Section 31 T13N R16W, Section 2 T12N R17W



Unit 1

Unit 2

Unit 3



Nature Conservancy

Approved Temp Trail

DNRC Trust Land

0 0.38 0.75 1.5 Miles

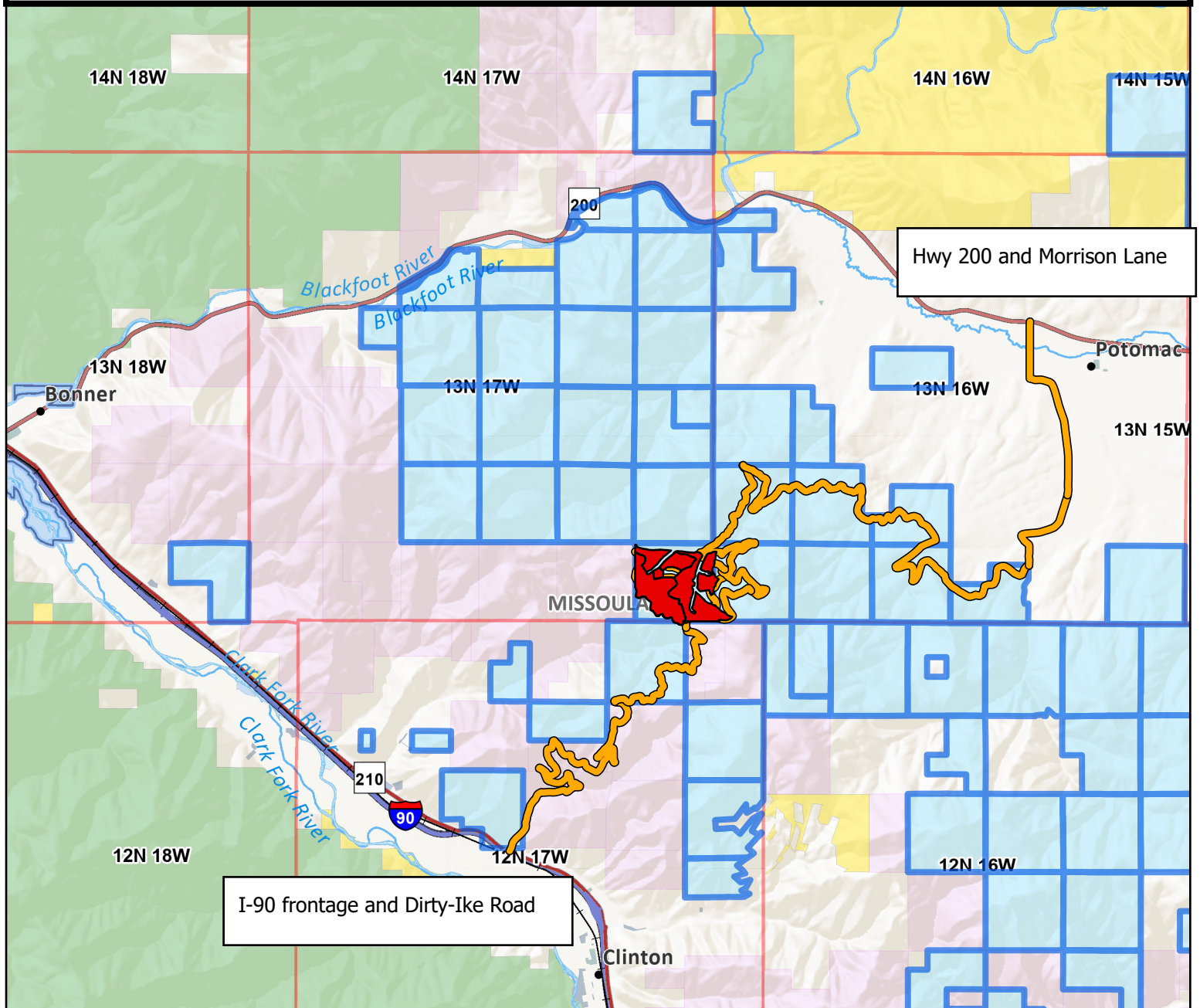




# Game On Timber Sale

## Haul Route A-2

Section 36 T13N R17W, Section 31 T13N R16W, Section 2 T12N R17W



### Legend

Game On Harvest Units    Game On Haul Roads

- Game On Harvest Units
- Haul Route
- DNRC Trust Lands



N



0    3.75    7.5    15 Miles

SA 12/18