

**DEPARTMENT OF NATURAL RESOURCES  
AND CONSERVATION**

**Trust Land Management Division**



STEVE BULLOCK, GOVERNOR

1625 ELEVENTH AVENUE

**STATE OF MONTANA**

DIRECTOR'S OFFICE: (406) 444-2074  
FAX: (406) 444-2684

P.O. BOX 201601  
HELENA, MONTANA 59620

**Initial Proposal  
Beaver Creek Bay Timber Sales  
December 15, 2017**

The Montana Department of Natural Resources and Conservation (DNRC), **Plains** Unit is proposing to harvest timber on the following state-owned parcel:

**Section 26, Township 24N, Range 31W**

The Beaver Creek Bay Timber Sales are proposed and located 17 air miles northwest of Thompson Falls, MT.

The objective of these timber sales is to generate revenue for their associated Trust Funds, improve forest health by reducing the possibility of insect and disease activity, reduce excessive fuel loading and the related risk of wildfire, and reestablish and promote timber types historically found in these areas. The stands would be monitored for natural regeneration and planted if necessary.

The Beaver Creek East Timber Sale would have one harvest unit of approximately 46 acres and would produce an estimated 1,000 mbf through a seed tree prescription. The Beaver Creek West Timber Sale would have three harvest units of approximately 42 acres and would produce an estimated 500 mbf through seed tree and/or shelterwood prescriptions. These proposed harvests would contribute to the DNRC's sustained yield as mandated by state statute 77-5-222.

There would be approximately 0.5 miles of temporary roads constructed to access the standing timber.

These stands would be monitored for natural regeneration and planted if necessary. These stands would also be monitored for noxious weed and sprayed when needed.

The DNRC is in the scoping phase of the project environmental assessment so all volumes, acreages and road distances are preliminary estimates. In preparation for this project, specialists such as wildlife biologists, hydrologists, soil scientists, and archeologists would be consulted.

The Montana DNRC invites written comments and suggestions concerning this proposal. Please respond by **March 1, 2018** to:

Department of Natural Resources and Conservation

Attn: **Dale Peters**

**Plains Unit**

**P.O. Box 219**

**Plains, MT 59859**

**dpeters@mt.gov**

**406-826-4722**

PLAINS UNIT

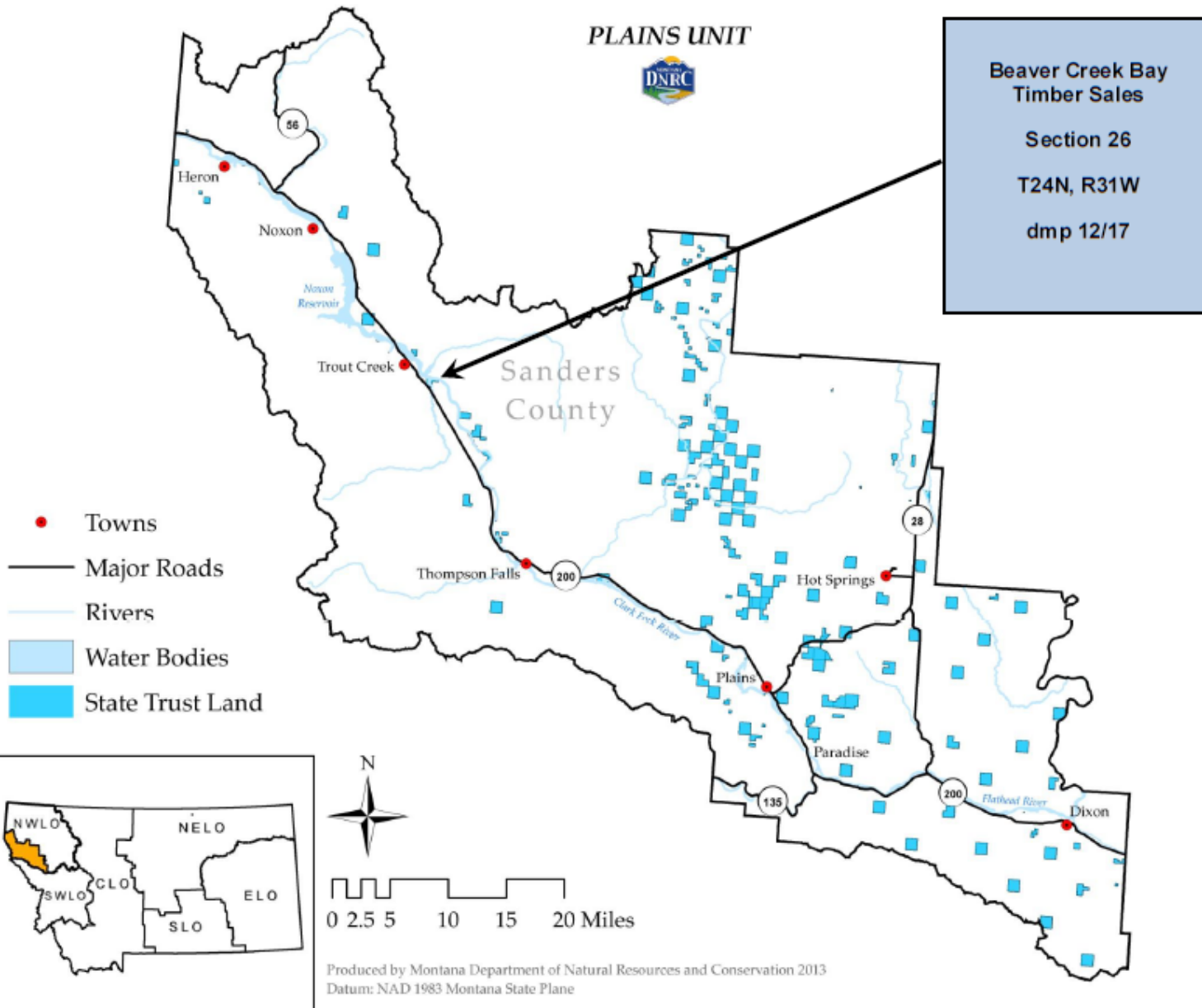


Beaver Creek Bay  
Timber Sales

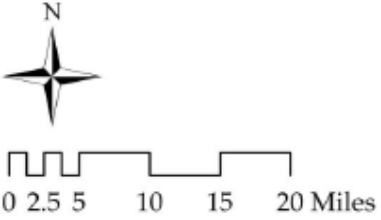
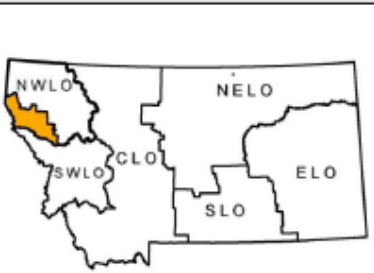
Section 26

T24N, R31W

dmp 12/17

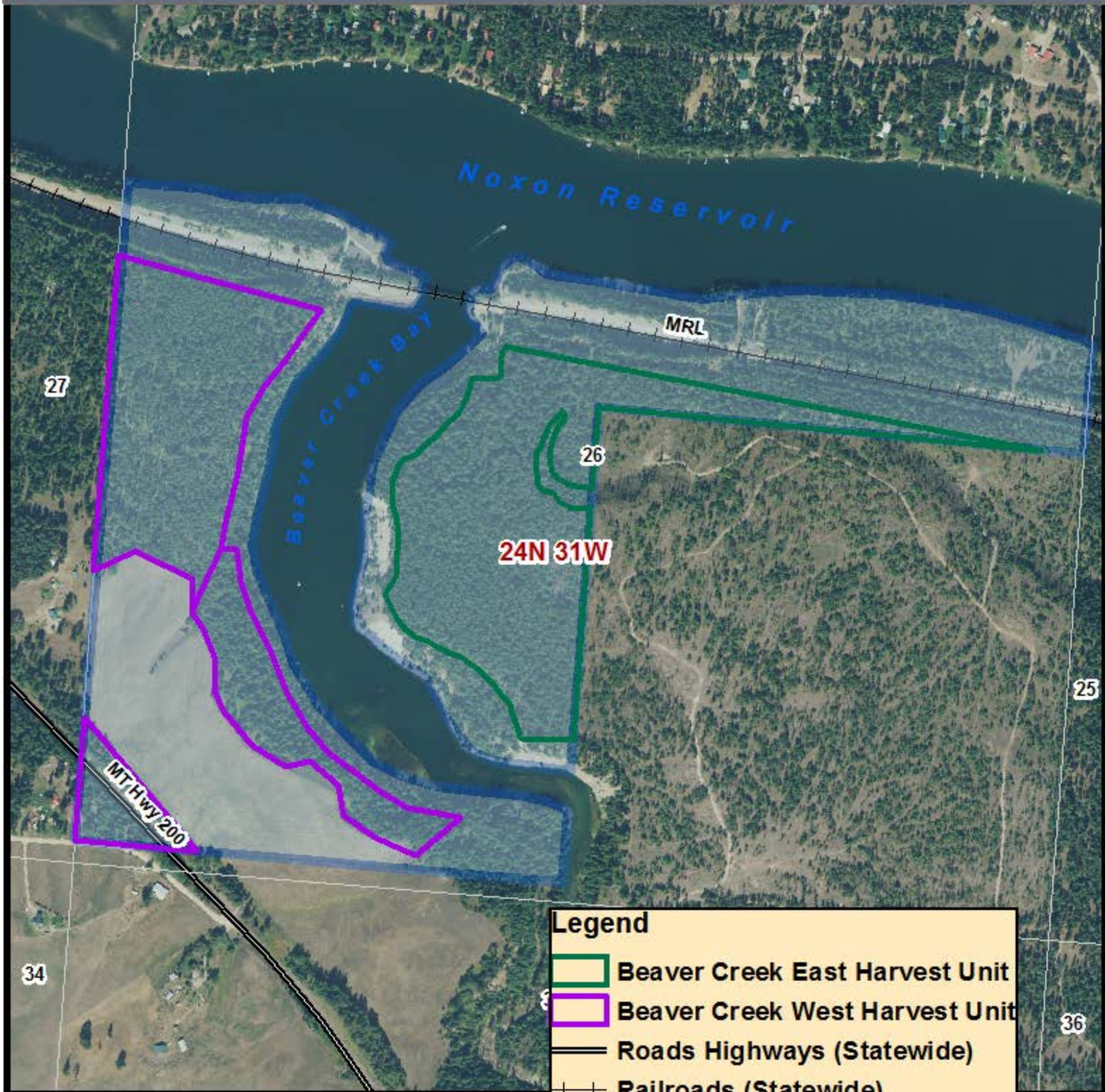


- Towns
- Major Roads
- Rivers
- Water Bodies
- State Trust Land



Produced by Montana Department of Natural Resources and Conservation 2013  
Datum: NAD 1983 Montana State Plane

# Beaver Creek Bay Sec 26 T24N R31W



Montana DNRC  
Northwestern Land Office  
Plains Unit dmp 12/17

**Legend**

- Beaver Creek East Harvest Unit
- Beaver Creek West Harvest Unit
- Roads Highways (Statewide)
- Railroads (Statewide)
- MT DNRC Ownership

