

**DEPARTMENT OF NATURAL RESOURCES  
AND CONSERVATION**

**Trust Land Management Division**



STEVE BULLOCK, GOVERNOR

1625 ELEVENTH AVENUE

**STATE OF MONTANA**

DIRECTOR'S OFFICE: (406) 444-2074  
FAX: (406) 444-2684

P.O. BOX 201601  
HELENA, MONTANA 59620

**Initial Proposal  
Bear Springs Timber Project  
December 26, 2017**

The Montana Department of Natural Resources and Conservation (DNRC), Kalispell Unit is proposing to harvest timber on the following state-owned parcel:

**Section 16, Township 27N, Range 25W**

The Bear Springs Timber Project is located approximately 8 miles west of Marion, Montana.

The primary objectives of the proposed project are:

- Generate revenue for the Common Schools Trust.
- Improve the health and vigor of the forest.
- Improve road access.

The proposed project would harvest approximately 2 million board feet from 560 acres using commercial thinning and sanitation harvest prescriptions. The proposed harvest would contribute to the DNRC's sustained yield as mandated by state statute 77-5-222.

Noxious weed management, pile burning, and site preparation activities may occur after harvest operations have been completed.

The DNRC is in the scoping phase of the project environmental assessment so all volumes, acreages, and road plans are preliminary estimates. In preparation for this project, specialists such as wildlife biologists, hydrologists, soil scientists, and archaeologists will be consulted.

The Montana DNRC invites written comments and suggestions concerning this proposal. Please respond by **January 27, 2018** to:

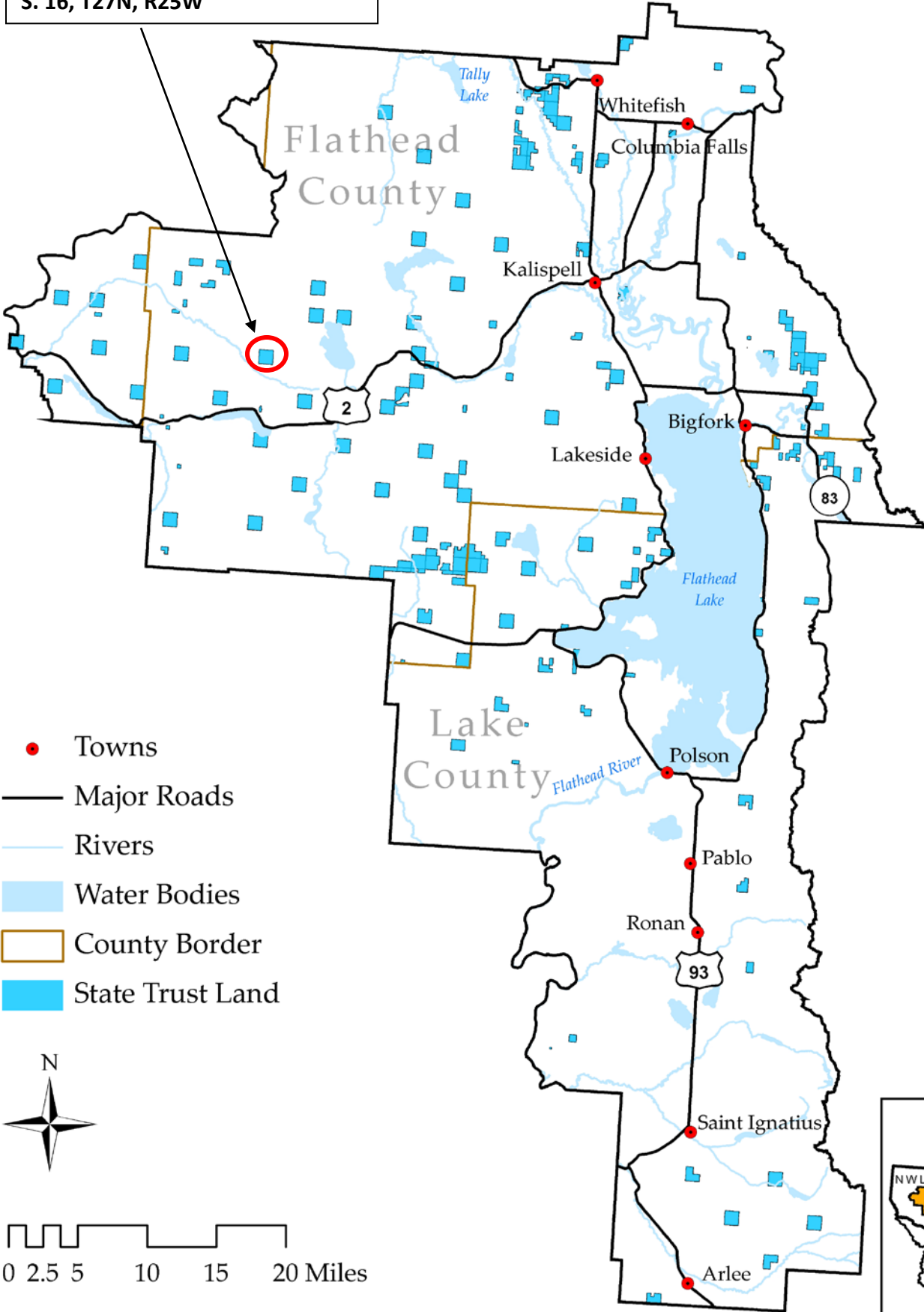
Department of Natural Resources and Conservation  
Attn: Pete Seigmund  
Kalispell Unit  
655 Timberwolf Parkway, Kalispell MT 59901  
[pseigmund@mt.gov](mailto:pseigmund@mt.gov)  
(406) 751-2266

# BEAR SPRINGS VICINITY MAP

## KALISPELL UNIT



**BEAR SPRINGS TIMBER PROJECT**  
S. 16, T27N, R25W



- Towns
- Major Roads
- Rivers
- Water Bodies
- County Border
- State Trust Land

