

NEVADA CREEK DAM

Fact Sheet

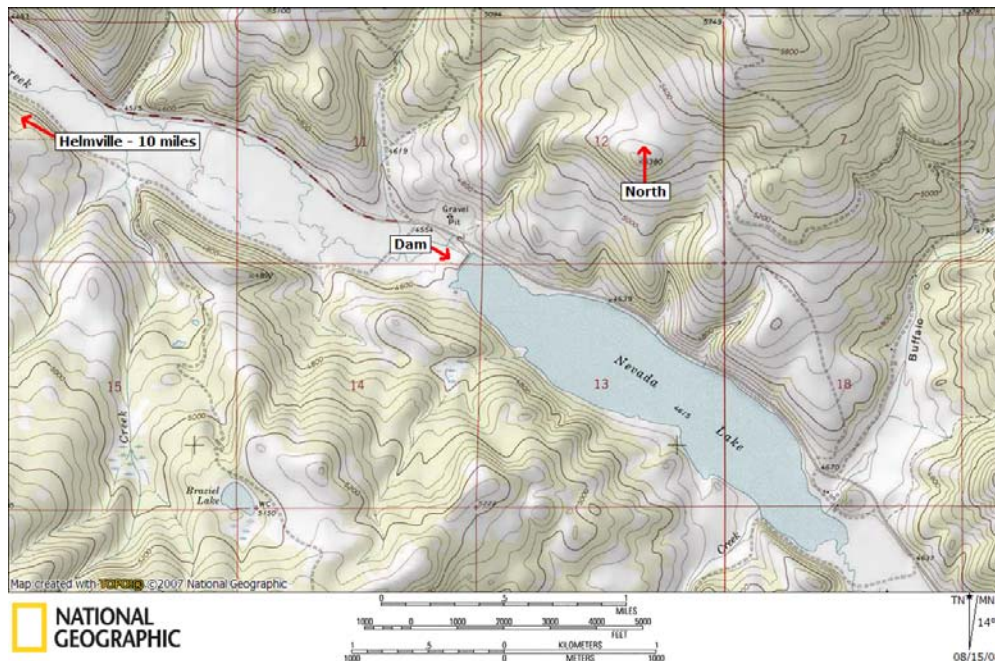
PROJECT DESCRIPTION

- ◆ Located on Nevada Creek in Powell County, adjacent to State Hwy 141, between Avon and Helmville
- ◆ Construction completed in 1938
- ◆ Owned by DNRC & managed by SWPB
- ◆ Operated by Nevada Creek WUA since 1939
- ◆ Project consists of:
 - Earthfill Dam, 105 feet high, 1,083 feet long
 - Uncontrolled ogee crest concrete chute spillway
 - 5-foot diameter 400 foot-long and 6-foot diameter 140 foot-long, gated, reinforced concrete outlet conduit
 - 54-inch butterfly operating gate and 54-inch diameter slide guard gate
- ◆ Normal storage at spillway crest is 11,152 acre-feet, covering 368 surface acres
- ◆ The dam is a “high hazard” structure which means that its failure could cause loss of life. Numerous houses, roads, bridges, canals and utilities are located in the flood plain below the dam.



WATER USE

- ◆ 8,440 acre-feet through 35 contracts with two canals: Douglas Canal (12.7 miles long) and North Canal (13.4 miles long)
- ◆ Water primarily used for irrigation but also used for water-based recreation and regulation of stream flows



REHABILITATION SUMMARY

Nevada Creek Dam was rehabilitated in 2001 – 2003. The rehabilitation project included:

- ◆ Replacement of the spillway
- ◆ Extension of the outlet works
- ◆ Installation of relief wells to reduce foundation pressures
- ◆ The addition of a toe berm to enhance embankment stability
- ◆ Project cost (design and construction): \$2,800,000 (2004)

FUTURE NEEDS

The dam was rehabilitated from 2001 – 2003 and meets or exceeds all current safety standards. No deficiencies currently exist.



Upstream Face



Outlet



Spillway