



# Montana Recent Streamflow Conditions

Prepared for the State of Montana  
Governor's Drought and Water Supply  
Advisory Committee

Katherine Chase, USGS Wyoming-  
Montana Water Science Center

September 19, 2017

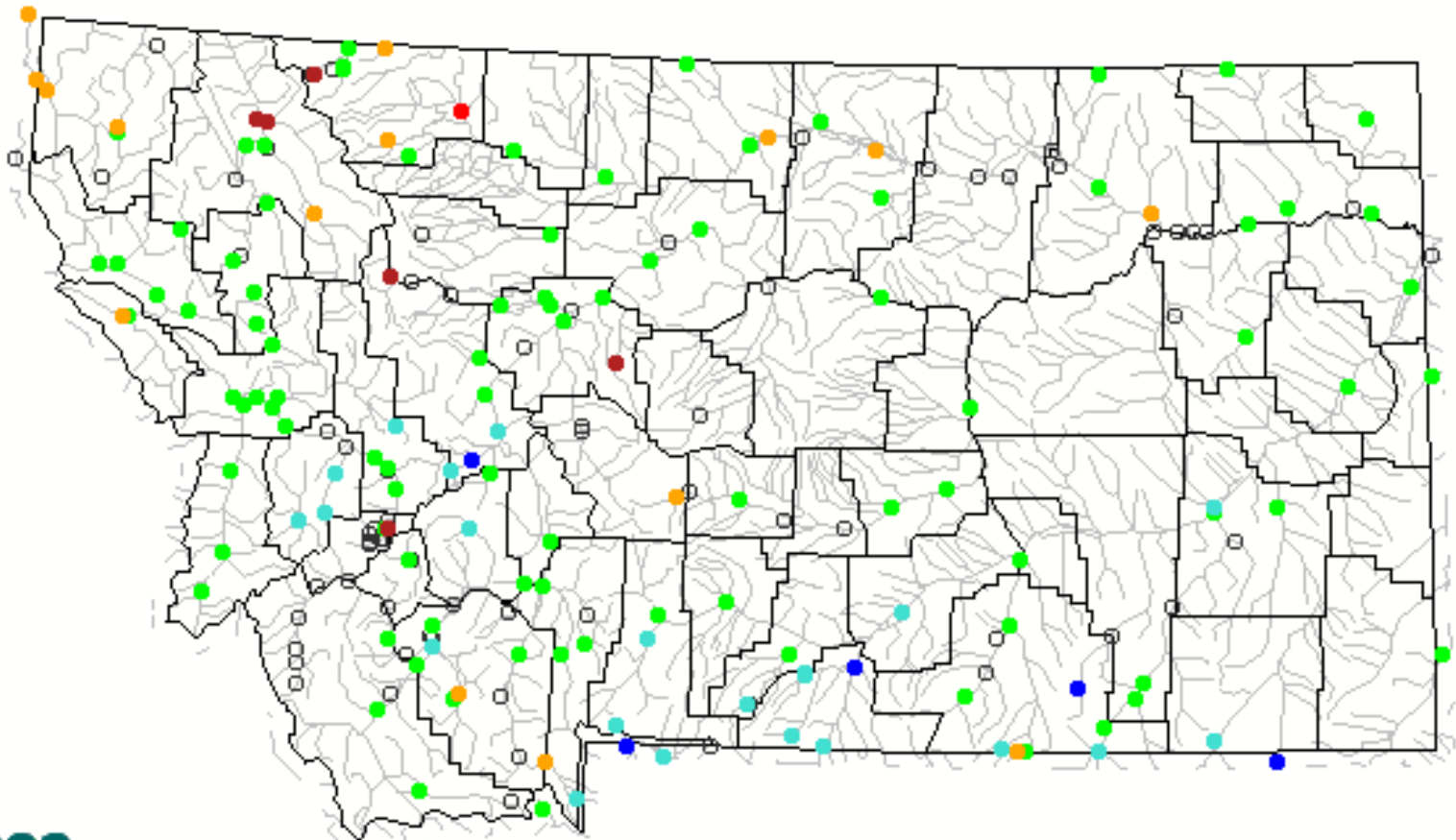
U.S. Department of the Interior  
U.S. Geological Survey



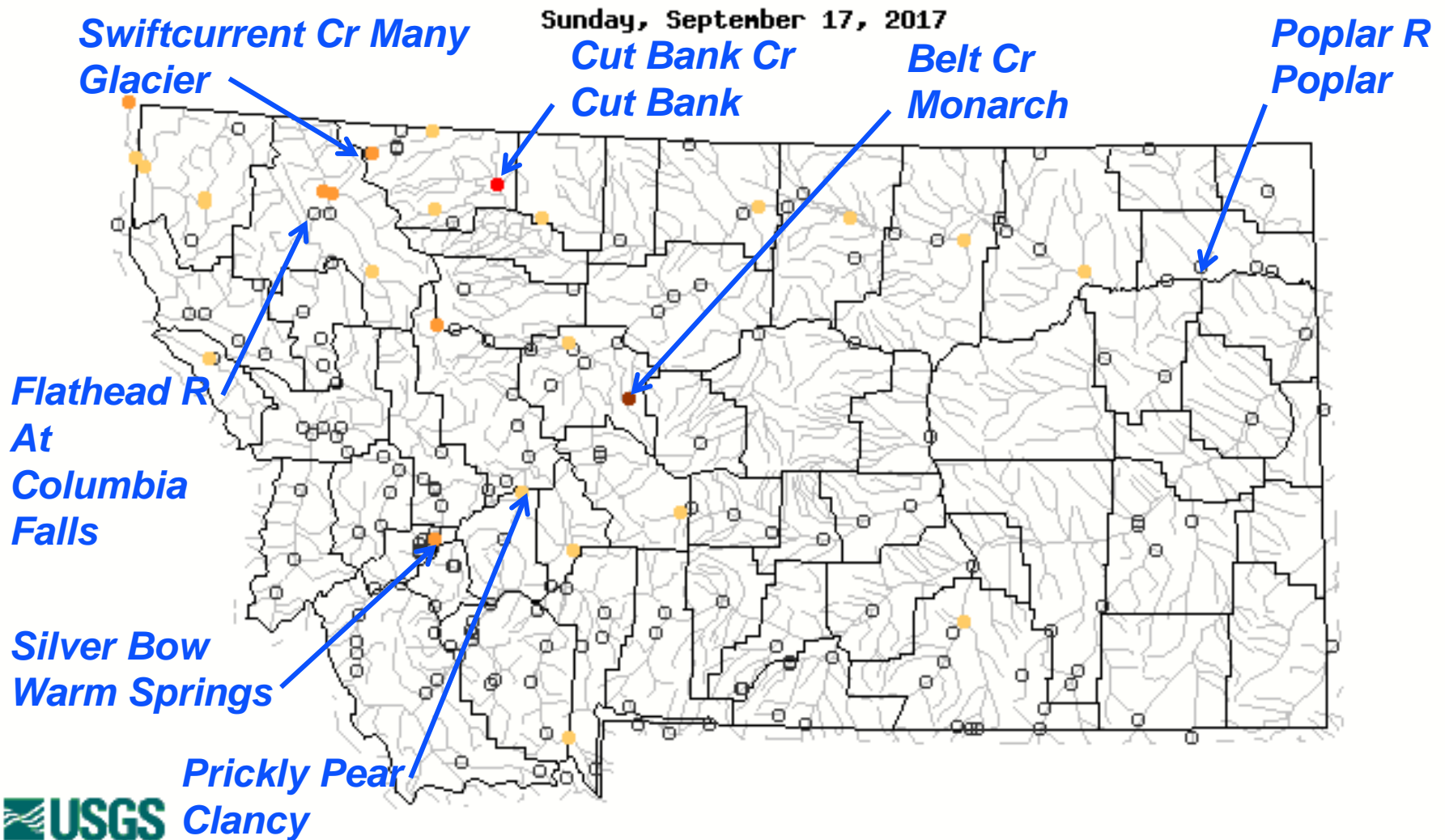
**12340500 Clark Fork ab Missoula  
1934 construction**

# Montana Sept. 18 Streamflow compared to Historical Streamflow

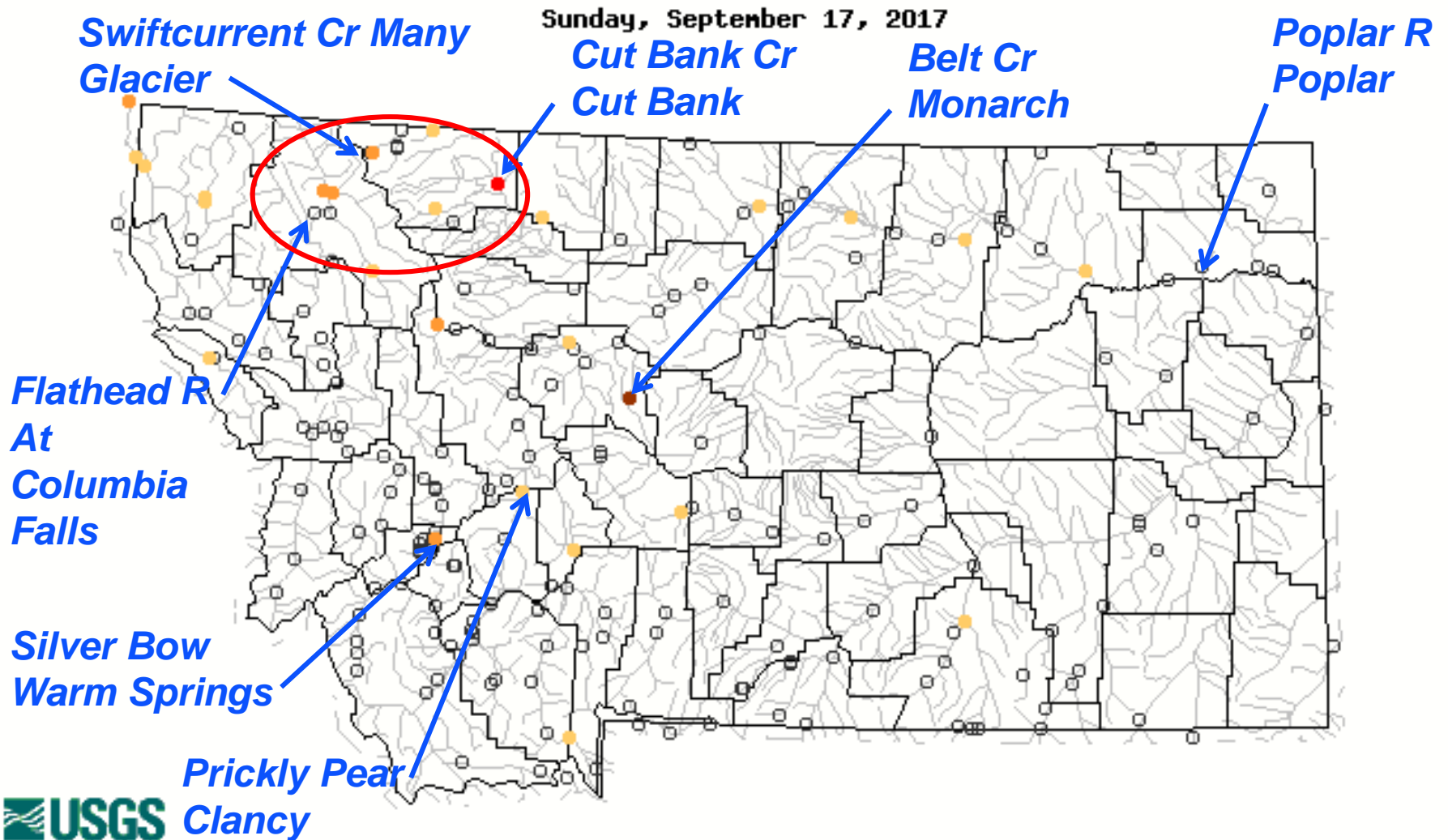
Monday, September 18, 2017 14:30ET



# Montana Below-normal 7-day Average Streamflow



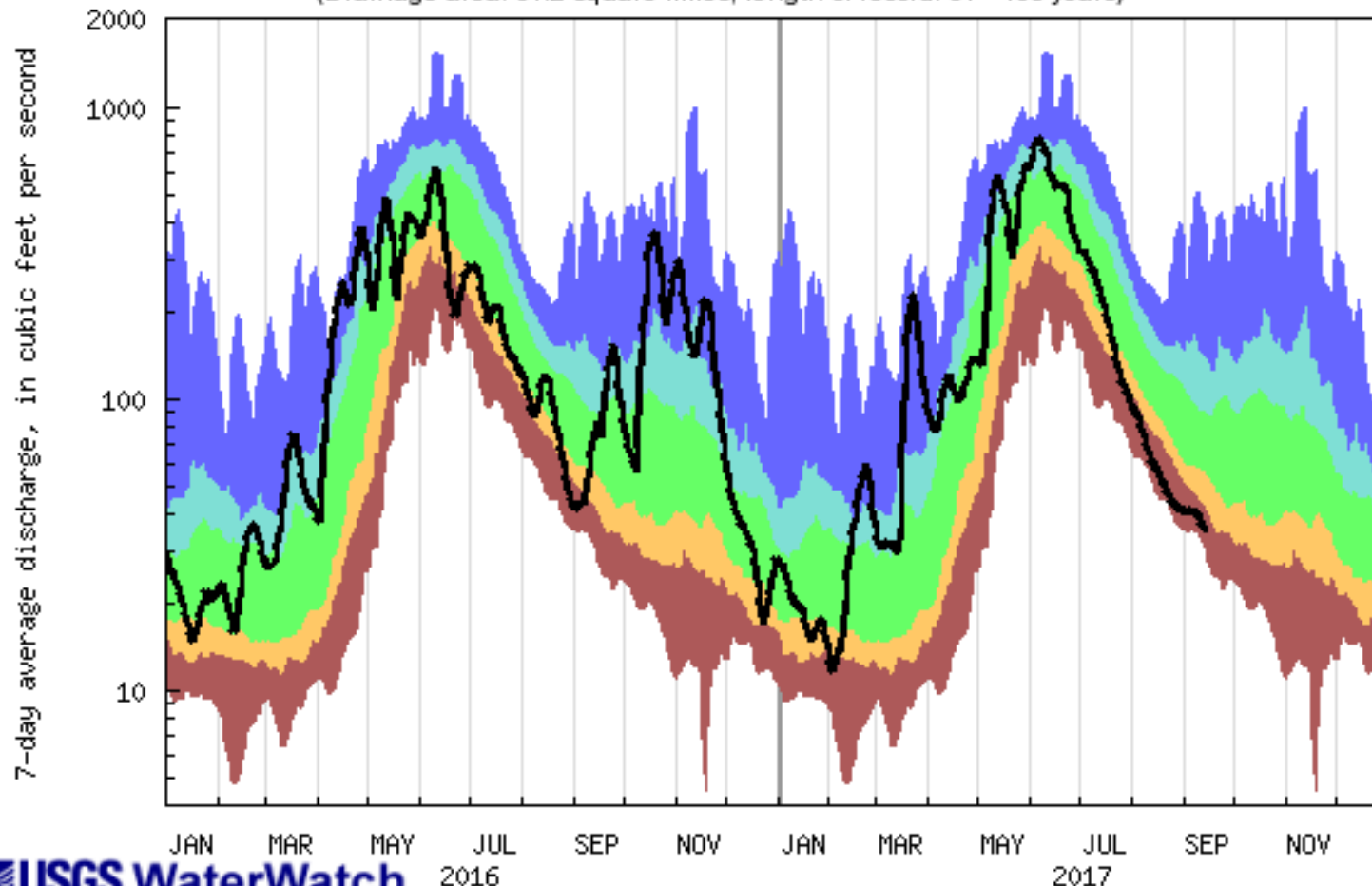
# Montana Below-normal 7-day Average Streamflow



# Recent streamflow conditions

## 05014500 Swiftcurrent Cr at Many Glacier (St Mary)

USGS 05014500 Swiftcurrent Creek at Many Glacier MT  
(Drainage area: 31.2 square miles, length of record: 61 - 105 years)



USGS WaterWatch

Last updated: 2017-09-15

### Explanation - Percentile classes

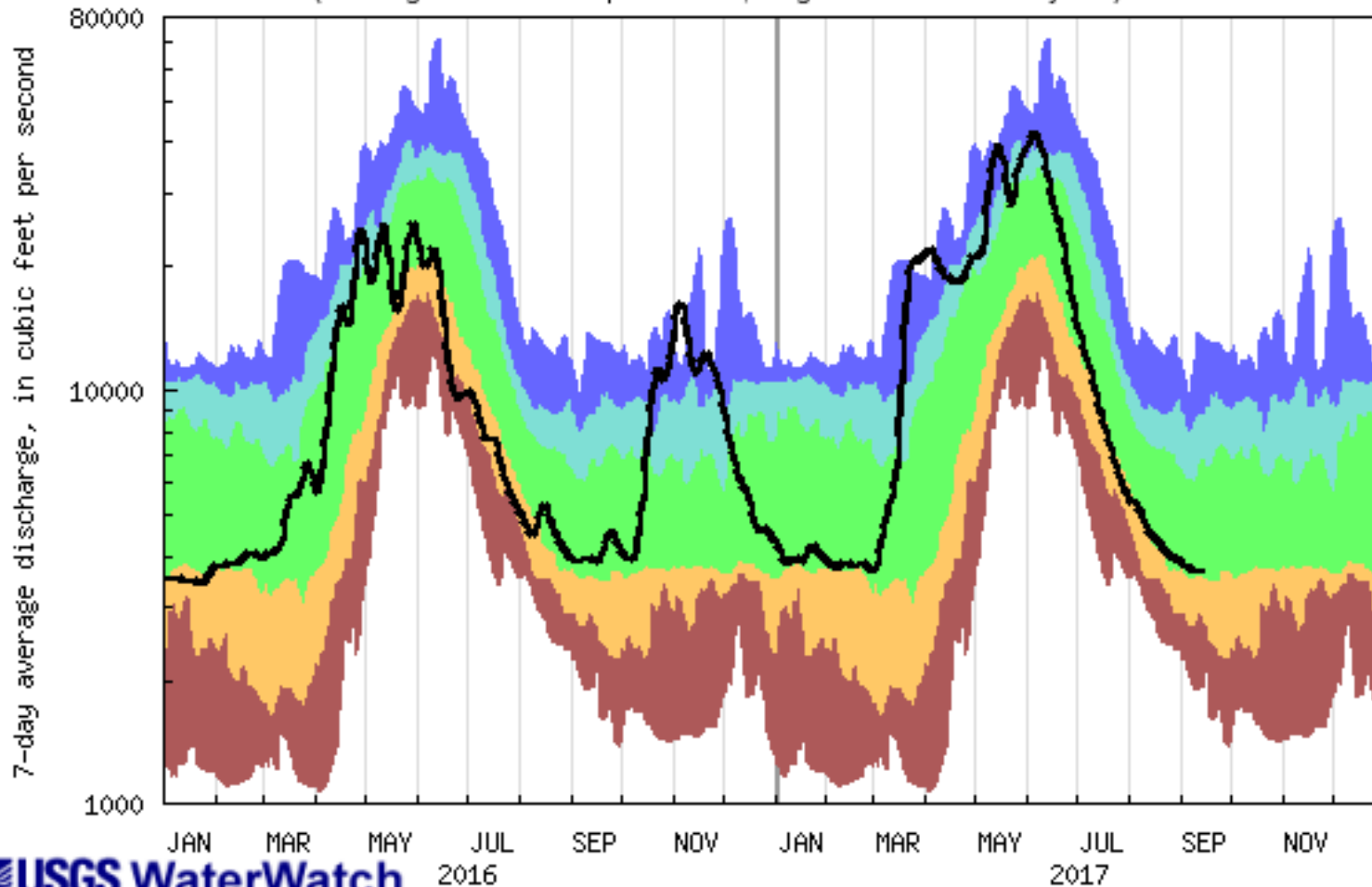
lowest-10th percentile	10-24	25-75	76-90	90th percentile-highest	Flow
Much below normal	Below normal	Normal	Above normal	Much above normal	



# Recent streamflow conditions

## 12363000 Flathead R at Columbia Falls (Flathead)

USGS 12363000 Flathead River at Columbia Falls MT  
(Drainage area: 4473 square miles, length of record: 64 - 65 years)



USGS WaterWatch

2017

Last updated: 2017-09-15

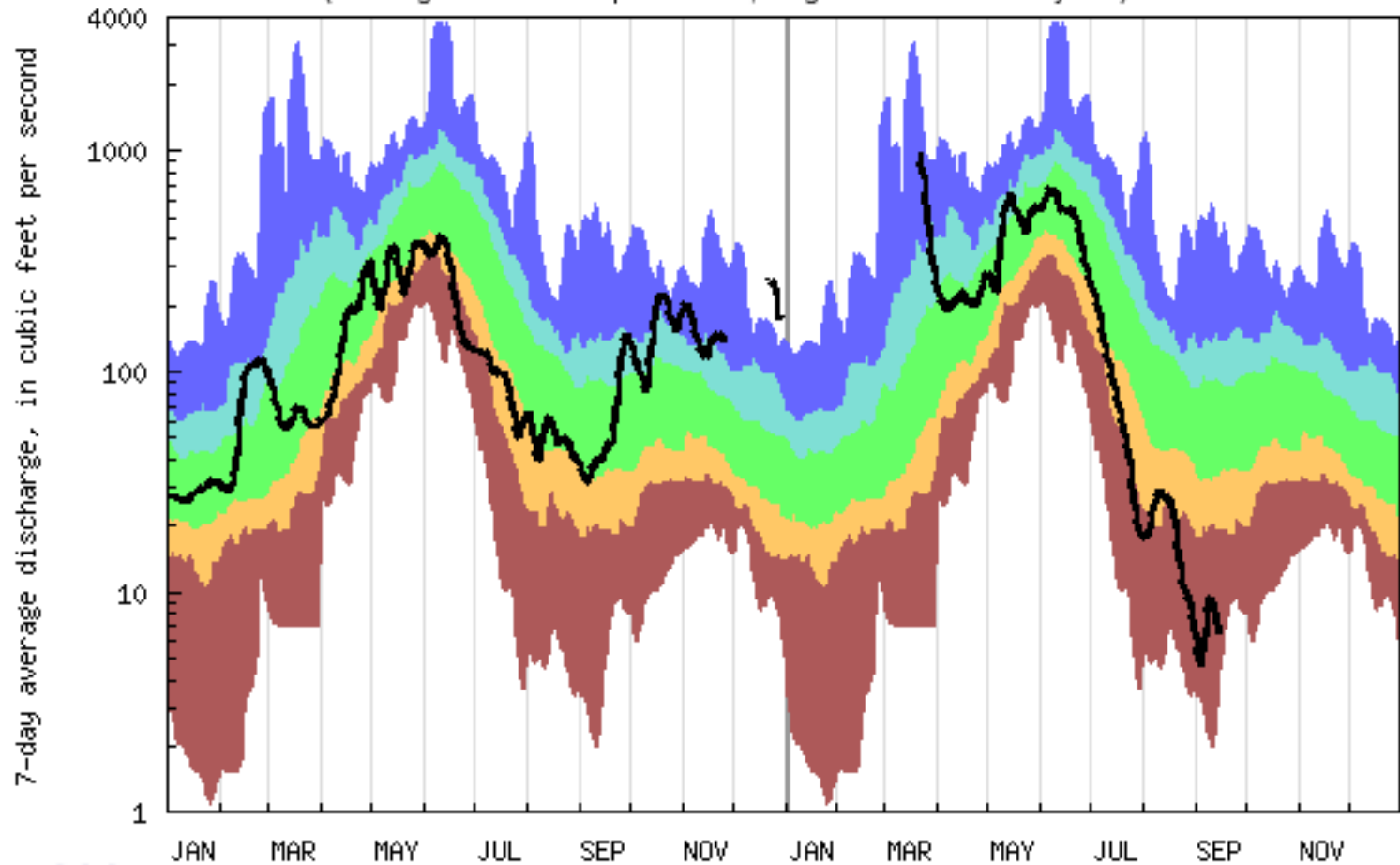




# Recent streamflow conditions

## 06099000 Cut Bank Cr at Cut Bank (Marias)

USGS 06099000 Cut Bank Creek at Cut Bank MT  
(Drainage area: 1032 square miles, length of record: 65 - 68 years)

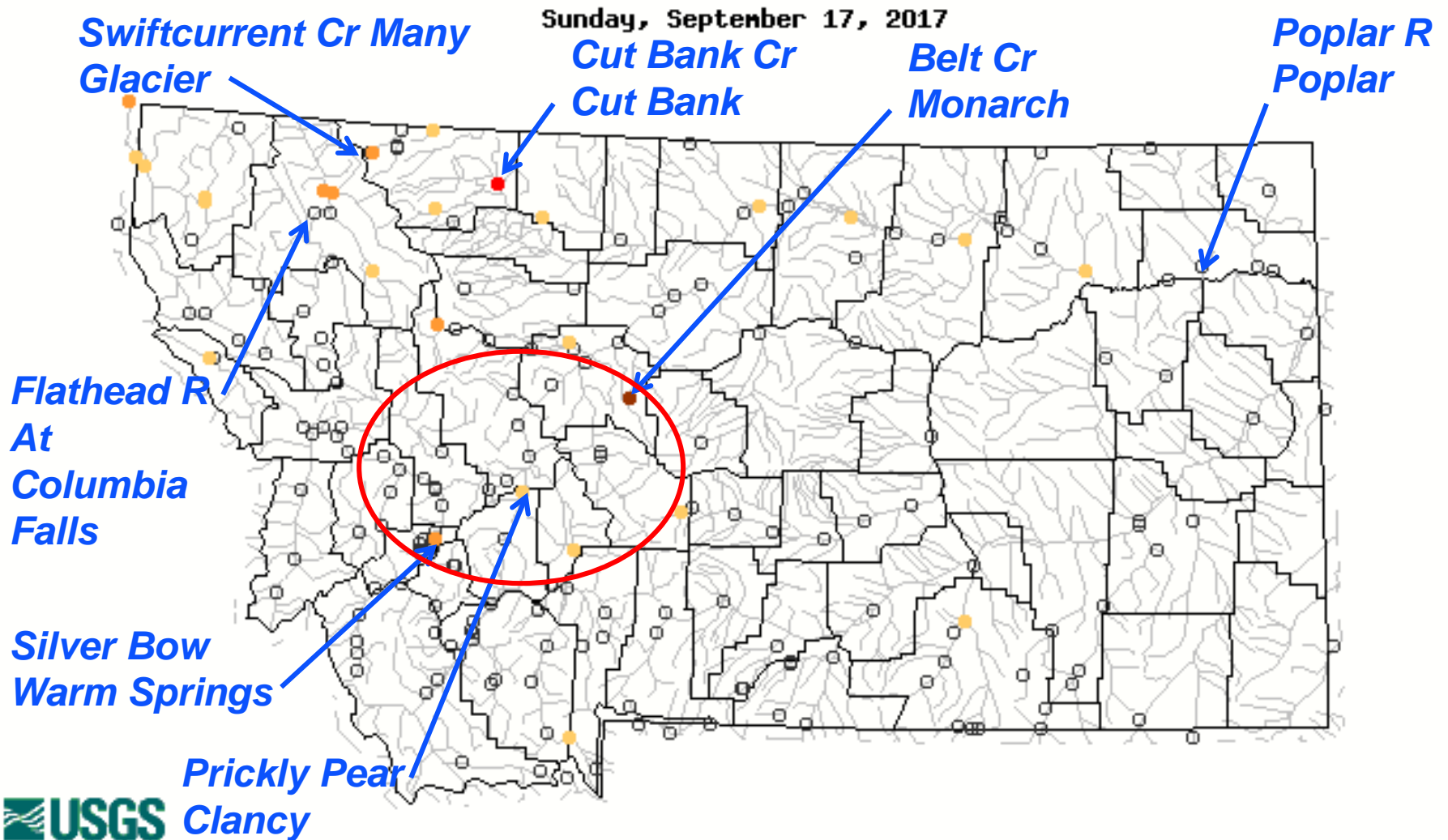


USGS WaterWatch

Last updated: 2017-09-15



# Montana Below-normal 7-day Average Streamflow

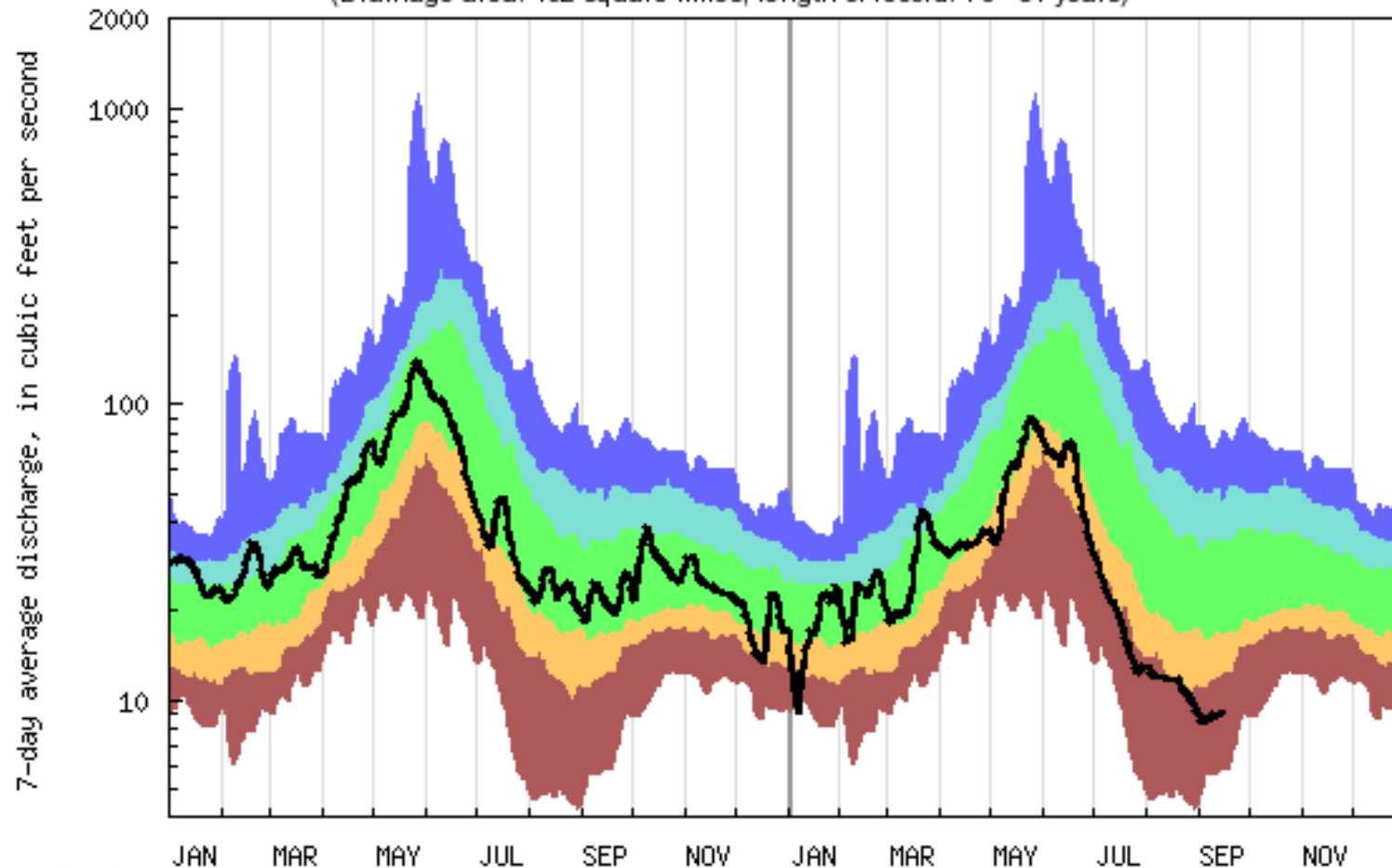




# Recent streamflow conditions

## 06061500 Prickly Pear Cr nr Clancy (Upper Missouri)

USGS 06061500 Prickly Pear Creek near Clancy MT  
(Drainage area: 192 square miles, length of record: 76 - 81 years)



USGS WaterWatch

2016

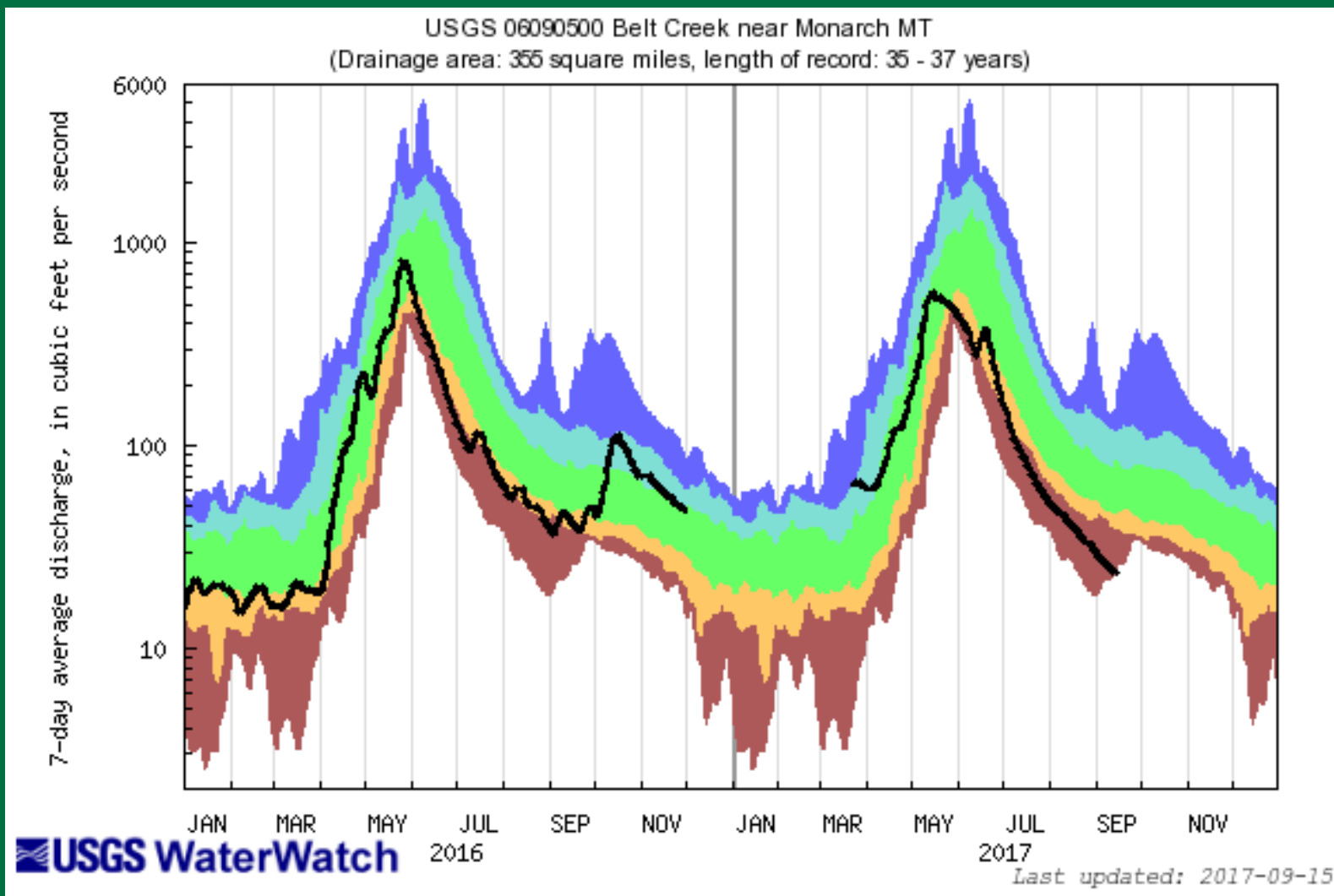
2017

Last updated: 2017-09-15



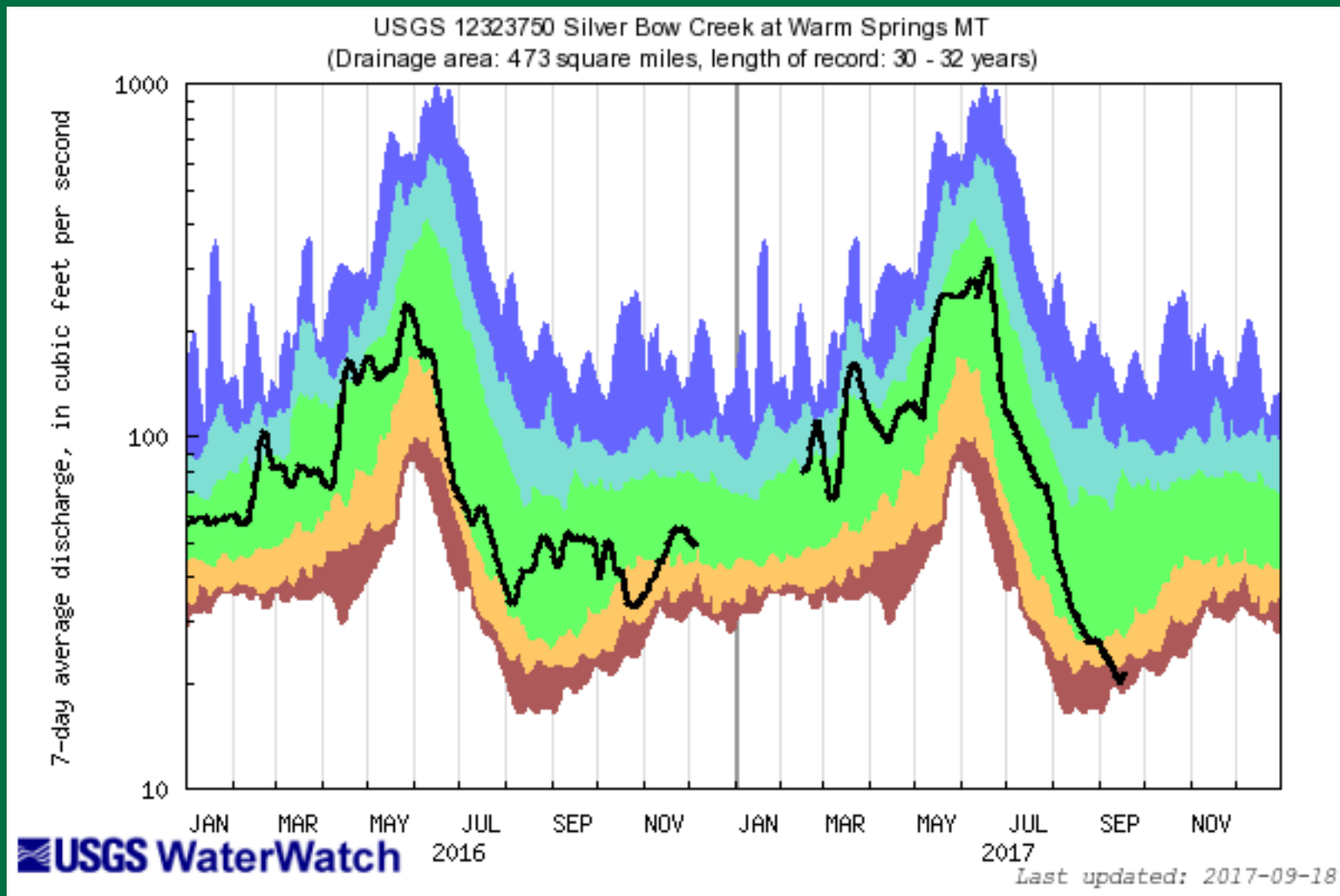
# Recent streamflow conditions

06090500 Belt Cr nr Monarch (Upper Missouri)

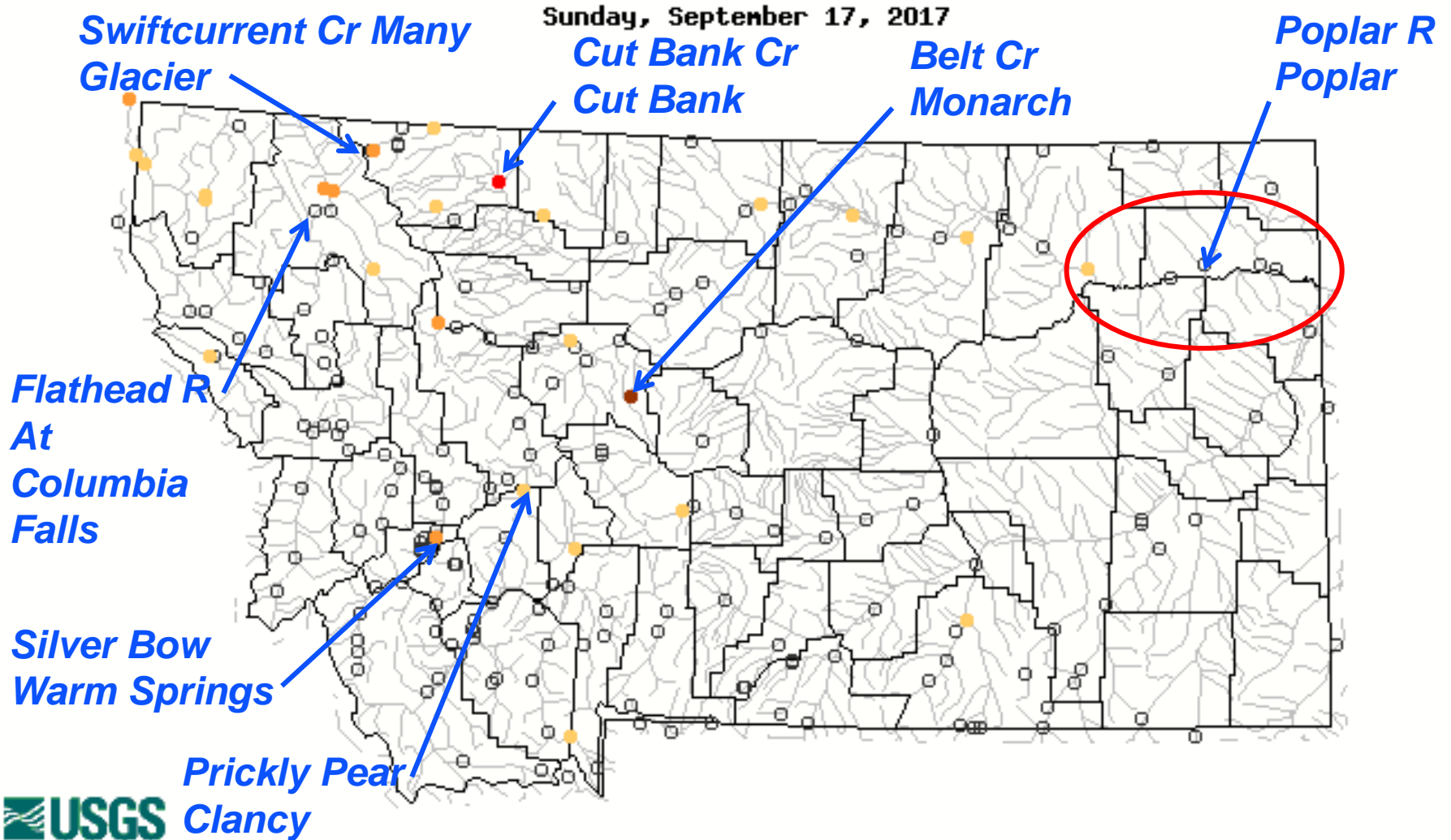


# Recent streamflow conditions

## 12323750 Silver Bow Creek at Warm Springs (Clark Fork)



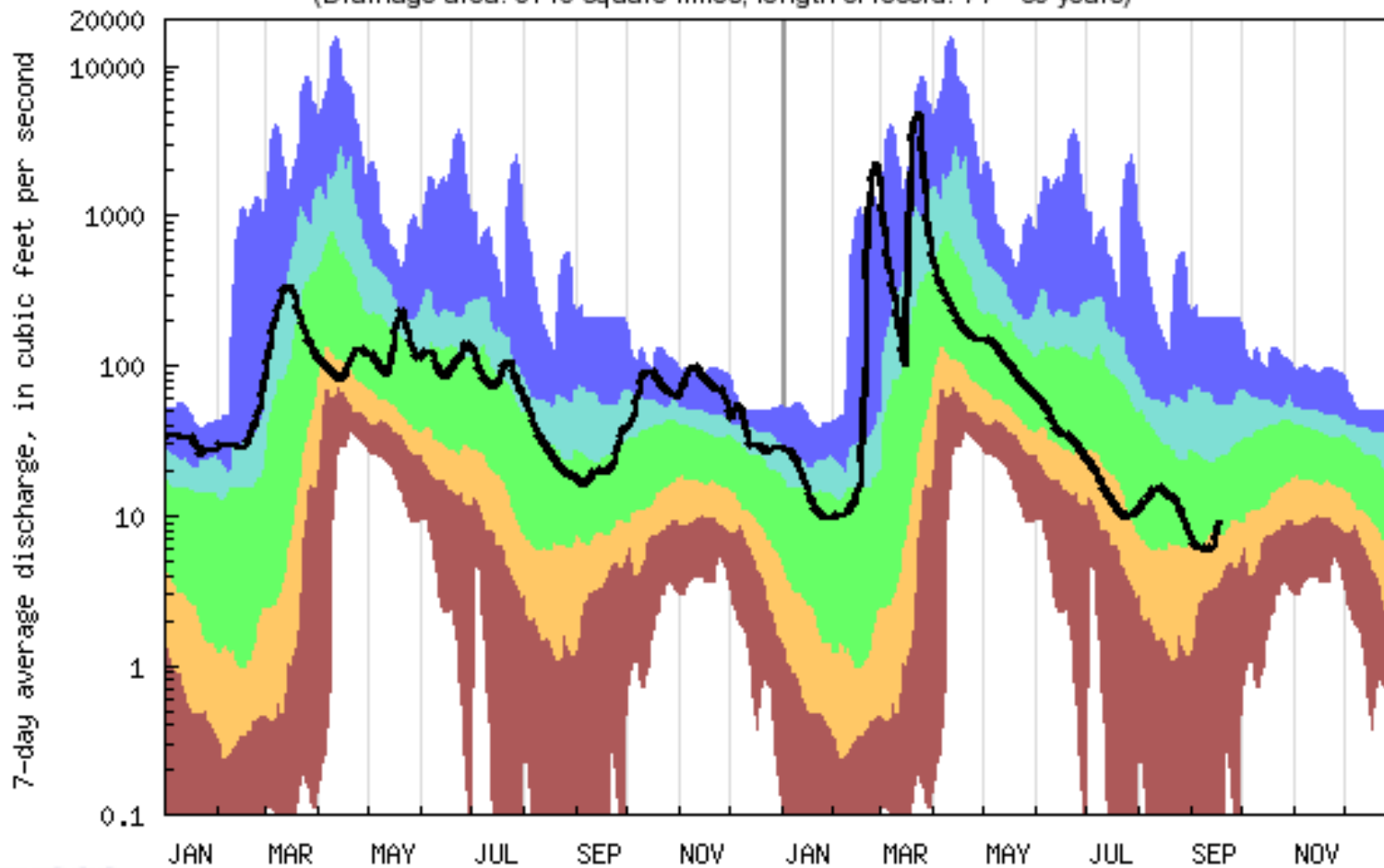
# Montana Below-normal 7-day Average Streamflow



# Recent streamflow conditions

## 06181000 Poplar R nr Poplar (Missouri-Poplar)

USGS 06181000 Poplar River near Poplar MT  
(Drainage area: 3140 square miles, length of record: 77 - 80 years)



USGS WaterWatch

2016

2017

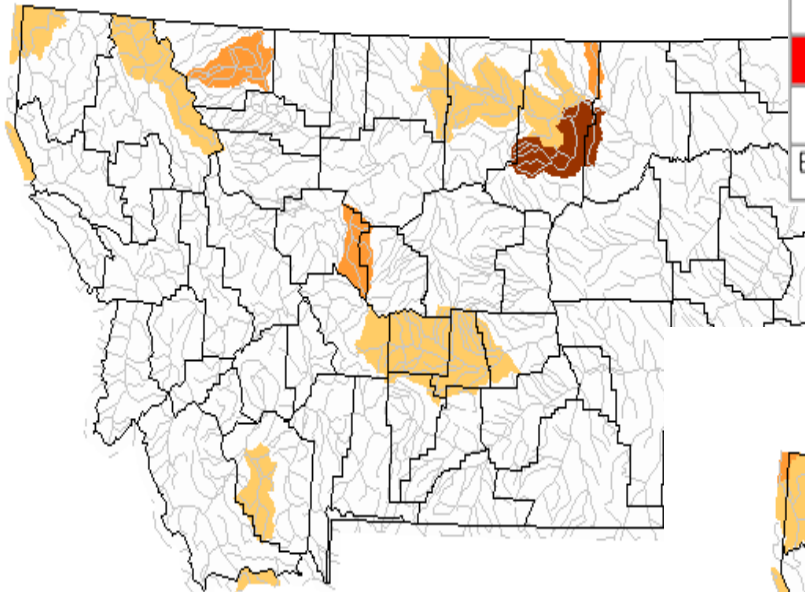
Last updated: 2017-09-18



# Statewide below normal streamflow conditions

## Comparison with last month (August 23)

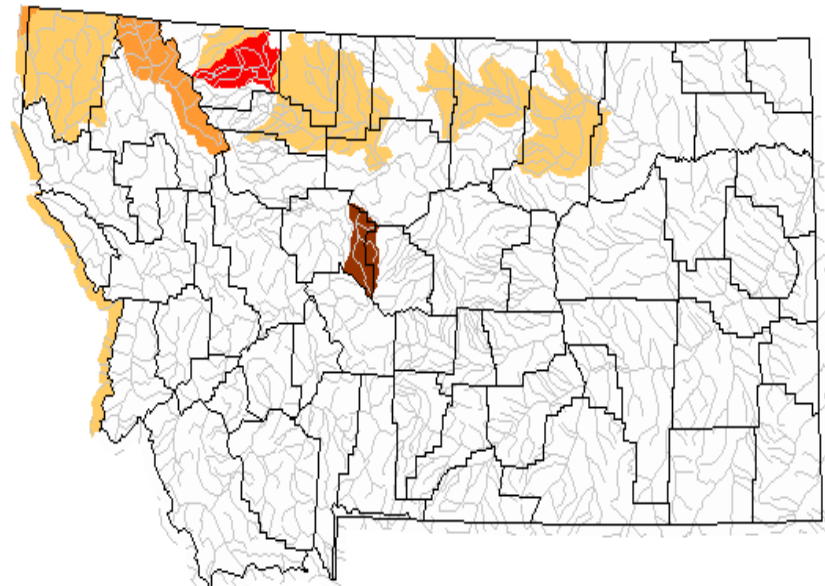
Wednesday, August 23, 2017



### Explanation - Percentile classes

Low	<=5	6-9	10-24	Insufficient data for a hydrologic region
Extreme hydrologic drought	Severe hydrologic drought	Moderate hydrologic drought	Below normal	

Sunday, September 17, 2017





# Recently discontinued USGS streamgages

## *UPDATES*

To be discontinued effective September 1

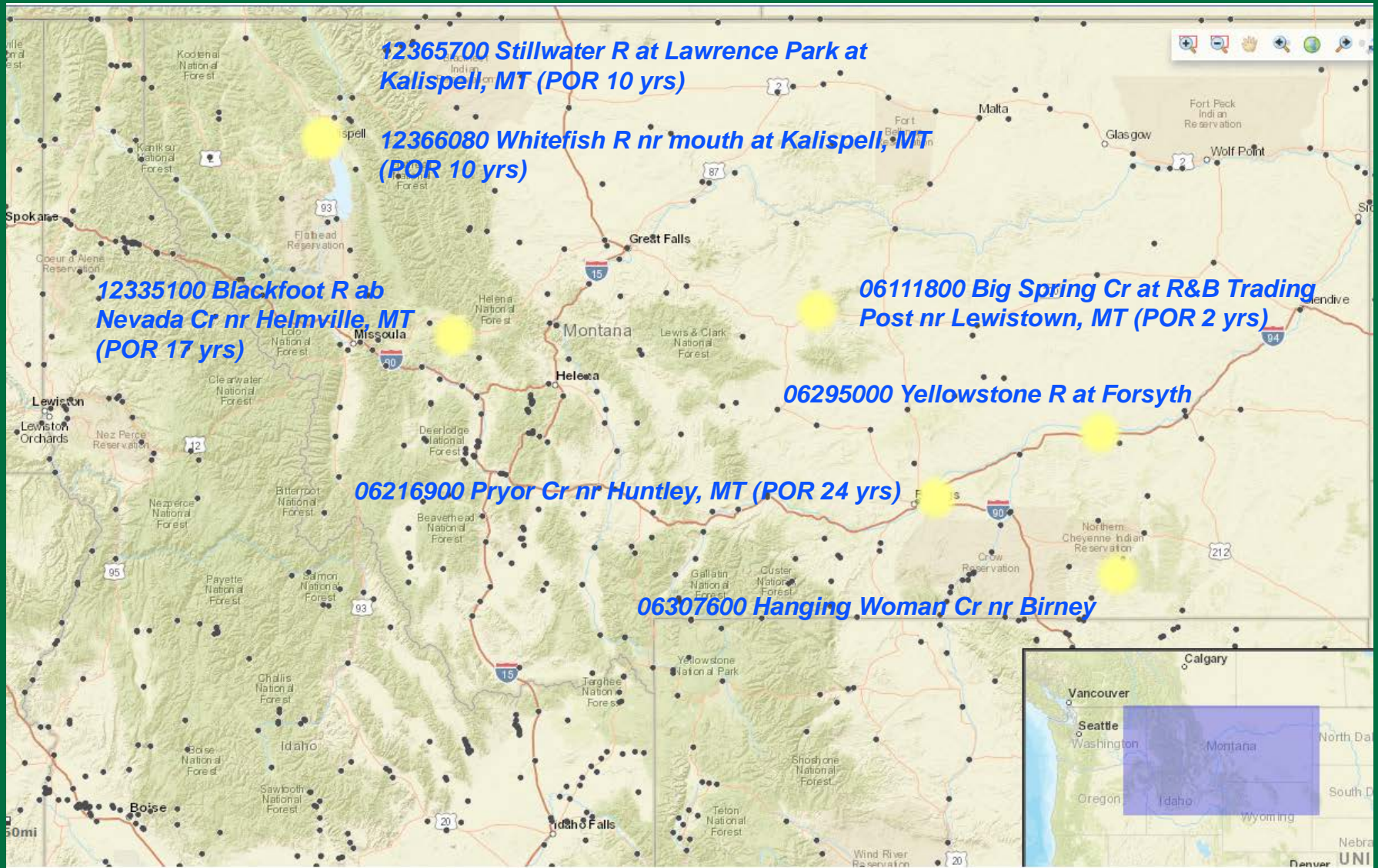
- 06295000 Yellowstone R at Forsyth

To be discontinued effective October 1

- 06307600 Hanging Woman Cr nr Birney

To be discontinued effective September 12

- 06111800 Big Spring Cr at R&B Trading Post nr Lewistown, MT (POR 2 yrs)
- 06216900 Pryor Cr nr Huntley, MT (POR 24 yrs)
- 12335100 Blackfoot R ab Nevada Cr nr Helmville, MT (POR 17 yrs)
- 12365700 Stillwater R at Lawrence Park at Kalispell, MT (POR 10 yrs)
- 12366080 Whitefish R nr mouth at Kalispell, MT (POR 10 yrs)



## *U.S. Geological Survey contacts*

- **Wyoming-Montana Center Director**
  - John Kilpatrick ([jmkilpat@usgs.gov](mailto:jmkilpat@usgs.gov)) (406) 457-5902
- **Wyoming-Montana Surface-Water Specialist**
  - Kathy Chase ([kchase@usgs.gov](mailto:kchase@usgs.gov)) (406) 457-5957
- **Wyoming-Montana Data Chief**
  - Kirk Miller ([kmiller@usgs.gov](mailto:kmiller@usgs.gov)) (307) 775-9168