

STARVING CRAMER FIRE SALVAGE

NOTICE OF SALE

Department of Natural Resources & Conservation Timber Sale

The Starving Cramer Fire Salvage Timber Sale is located within Section 36, T12N-R17W and Section 34, T12N-R16W, on the State's Missoula Unit. Approximately 6,523 tons, consisting of green and fire killed ponderosa pine, Douglas-fir, and lodgepole pine is offered for sale.

Sealed bids will be opened at the Department of Natural Resources & Conservation, 2705 Spurgin Road, Missoula, Montana on **January 7, 2008 at 2:00 p.m.** Bids may be hand delivered or mailed and will be accepted any time prior to the bid opening. **DNRC recommends that bidders contact the Trust Land Management Division (406-542-4300) prior to the bid opening to ensure that your bid has been received.** Bids must be accompanied by a deposit of **\$3,914.00**, representing 5% of the minimum bid value of the sale in cashier's check, certified check, bank money order or bank draft to be applied to the stumpage for the successful bidder. Bid bonds will be accepted and, for the successful bidder, will be closed upon execution of the Timber Sale Contract and Timber Sale Bond.

The sale will be awarded to the highest responsible bidder. **Award of the timber sale is conditional upon approval of the timber sale by the State Board of Land Commissioners at their December 17, 2007 meeting.** If the successful bidder is unable to execute the contract within **15** calendar days from the date the sale is awarded, the bid deposit will be retained by the Department as liquidated damages. The right is reserved to reject any or all bids.

Prospective bidders can obtain the sale prospectus, sale contract and bid forms from the Department of Natural Resources & Conservation, Trust Land Management Division, in Missoula (406-542-4300), the Southwest Land Office in Missoula (406-542-4200), or the Missoula Unit in Missoula, MT (406-542-4309).

Visit our website at <http://www.dnrc.mt.gov> Online Services for upcoming sales and bid results

/s/ David A. Groeschl, Chief
Forest Management Bureau
Trust Land Mgmt Division

Publication Dates: December 7, 14, 21, & 28, 2007

TIMBER SALE PROSPECTUS
MONTANA DEPARTMENT OF NATURAL RESOURCES AND CONSERVATION

Timber Sale Name: Starving Cramer Fire Salvage			
Timber Sale Location: Section 34, T12N-R16W; Section 36, T12N-R17W			
For specific sale information, contact:			
Phone	406-542-4309	Jonathan Hansen	Missoula Unit Office
For copies of the Timber Sale Contract and bid forms, contact:			
Phone	406-542-4300	Forest Management Bureau	DNRC Missoula Office
Phone	406-542-4264	Robert Storer	Southwestern Land Office

General Bidding Information

1. Bids must be submitted on standard Department of Natural Resources & Conservation (Dept) bid forms.
2. Timber will be sold to the highest responsible bidder; however, the Dept reserves the right to reject any or all bids. **Award of this timber sale is conditional upon approval of the timber sale by the State Board of Land Commissioners at their December 17, 2007 meeting.**
3. The Dept recommends that bidders contact the Forest Management Bureau, Trust Land Management Division (406-542-4300) prior to the bid opening to ensure that your bid has been received.
4. A **Bid Guarantee** must accompany all bids and must be in the form of cash, cashiers check, certified check, money order, bank draft, surety bond or irrevocable letter of credit.
5. The Purchaser must submit a **Performance Bond** to the Dept within a maximum of **15** days of notification of sale award. The bond amount will be, at a minimum, 20% of the total bid value of the sale. The performance bond may be in the form of cash, irrevocable letter of credit, surety bond or certificate of deposit. The performance bond must be maintained separately from other payments for the duration of the sale contract. See the Timber Sale Contract for additional information.
6. The Purchaser must submit an **Advance Stumpage Payment** prior to cutting any timber. The amount of the advance stumpage payment will be based on the expected harvest rate and the bid value of the stumpage. The advance stumpage payment may be in the form of cash, irrevocable letter of credit, payment bond or certificate of deposit.
7. At rates specified in the Contract, the Purchaser will pay **Forest Improvement Fees** on all sawlog volume.
8. This sale is being sold based on the gross weight of all species. Minimum price and bid price are on a per ton basis. Unless specified, the price applies to all species, green and dead. Price may vary by product. Billing will be based on gross weight. A weight ticket from a certified scale is required for each load hauled, regardless of product type.
9. The Dept has estimated the net scale merchantable sawlog volume to be available for purchase under this contract. Other products may be part of this sale. All delivered wood will be weighed and billed at per ton bid rates. The Dept recognizes that a percentage of delivered wood may not meet the log manufacturing and recovery standards of the timber sale contract. The actual percentage will vary based on the log manufacturing and recovery specifications of the purchaser and tree conditions in the sale area. The actual delivered weight may vary, resulting in an overrun or under-run of the estimated tonnage. The Dept strongly recommends that bidders evaluate these effects before bidding.
10. The Dept does not conduct detailed road appraisals. All appraised costs are gross estimates or averages, provided only to show the relative amount of work required, and not the true market value. The Dept strongly recommends that bidders make their own estimates based on contract requirements. Cost estimates provided are not guaranteed.
11. Bidders are encouraged to examine the complete Timber Sale Package and Sale Area prior to bidding. Additional information is available at the phone numbers shown above.

12. Estimates for sale volume, species percents, defect, product class, etc. provided in this prospectus and volume estimates listed in the sale contract are not guaranteed.
13. This prospectus is provided for information purposes only. If the prospectus is in error or contradicts the Timber Sale Contract, the contract governs.
14. **Other Material – Removal of this material is optional and must be approved by the Forest Officer. The stumpage rate for this material is fixed at \$2.00/ton.**
15. **Biomass – Removal of this material is optional and must be approved by the Forest Officer. Rate is negotiable.**

TABLE 1: Summary of Sale Specifications				
Sale Data				
188	Net Sale Area (acres)	.36	Miles of road construction	
October 31, 2008	Contract ending date	7.5	Miles of road reconstruction	
84%	Cable logging required (% of volume)	N/A	Miles of road reclamation or abandonment	
Operating Season: January 7-March 1; July 2-September 1				
Charges and Appraised Costs				
\$3,914.00	Bid Guarantee (total \$)			
20% of bid value	Performance Bond			
\$N/A	Collected Road Maintenance And Road Use Charges (\$ per ton)			
\$3.84	Collected Forest Improvement Fee (\$ per ton) Concurrent w/ stumpage			
\$ N/A	Quarterly Installment of Forest Improvement Payments (\$ per payment, first 5 payments)			
\$6.59	Road Development Costs - Appraised Purchaser-Do (total \$)			
\$0.38	Road Maintenance Costs - Appraised Purchaser-Do (\$ per ton)			
\$0	Slash Disposal Costs - Appraised Purchaser-Do (\$ per ton)			
\$0	Timber Stand Improvement Costs - Appraised Purchaser-Do (\$ per ton)			

TABLE 2: Timber Cruise Data and Minimum Bids									
SPECIES	PP	DF	Dead PP	Dead LP	Dead DF	WF	Total Green	Total Dead/Dry	TOTAL or AVE
Minimum Acceptable Bid									\$12.00/ton
Pounds per cubic foot	58	58	50	50	50		58	50	
Contract Tons	512	739	2554	55	2663		1251	5272	6523
Gross MBF (Scribner 6" top DIB)	87	108	503	10	474		195	987	1182
%Cull and Breakage	6%	6%	7%	7%	7%			7%	
Net MBF	82	102	468	9	441		184	918	1102
Average logs per MBF	18	28	17	14	24		23	21	22
Average DBH	13	10	13	16	11		12	13	12
Average tons per acre harvested									34.7
Average MBF cut per acre on the timber sale									5.9
Range of cut trees per acre based on unit cruise									61 – 145
Calculated Sampling Error (net MBF): 10.9 %									
The total cruised volume will fall between 982 and 1222 thousand net board feet in 9 out of 10 cruises									
Tons Per Thousand Board Feet Conversion Factor = 6523 net tons per 1102 net MBF = 5.92 tons per MBF									

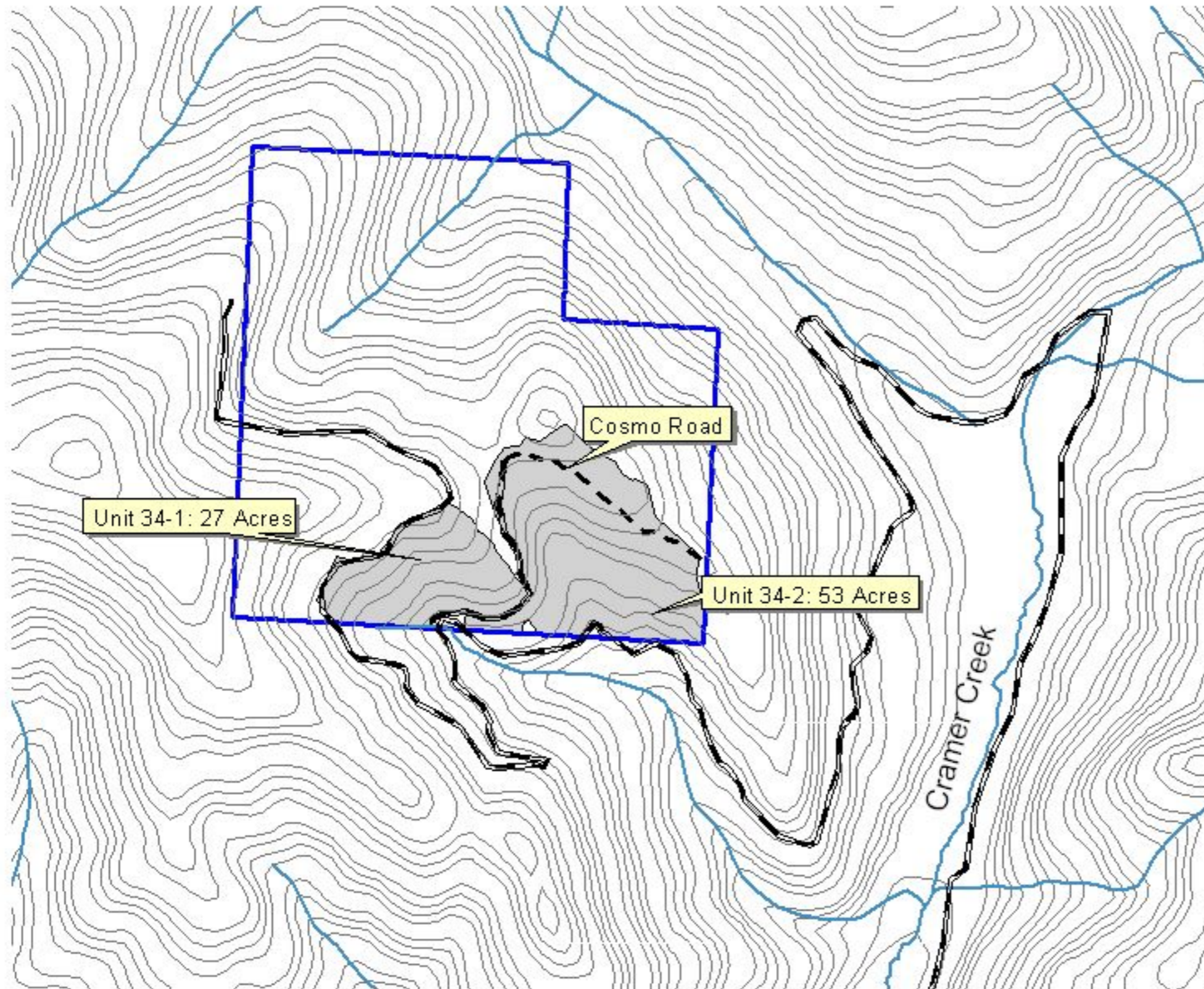
TABLE 3: Unit Harvest Volume and Harvest Schedule					
Unit	Section	Acres	Estimated Net Tons	Estimated Net MBF	Removal Date
1	36	23	611	104	September 1, 2008
2	36	41	1087	182	September 1, 2008
3	36	3	81	14	September 1, 2008
4	36	13	341	58	September 1, 2008
5	36	4	108	18	September 1, 2008
6	36	10	270	46	September 1, 2008
7	36	14	378	64	September 1, 2008
1	34	27	1222	207	September 1, 2008
2	34	53	2425	409	September 1, 2008

Additional Sale Information:

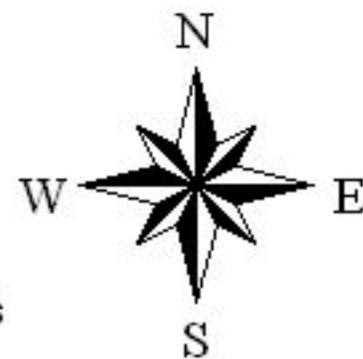
1. 84% of the volume associated with this timber sale will require a cable yarding system capable of yarding at least 1,600 feet external yarding distance uphill. A carriage capable of 50 feet minimum lateral yarding distance is also required. Refer to timber sale contract for further information.
2. Excaline yarding - Unit 36-6 (10 acres and 270 tons) will require Excaline yarding and forwarding from the yarder. The excaline must be capable of an external yarding distance of 600 feet.
3. The two gates adjacent to the Chase residence, access to Section 36, must remain closed at all times.
4. Purchaser will complete all of the required grass seeding as shown in Attachment B. The DNRC will provide all of the required grass seed.
5. Purchaser will be required to furnish and install one (1) 24" X 36' culvert as shown in the road log for the Lower Road System. The Purchaser will also be required to provide and install a 4' X 18" extension on an existing CMP on the Bonita Beacon Rd.
6. Upon completion of hauling the Purchaser will be required to furnish and apply 30 cubic yards of "road mix" gravel to the segment of the Cramer Creek access road between the two steel gates in accordance with the Chase Road Use Permit.

Starving Cramer Salvage Timber Sale

Section 34 T12N R16W

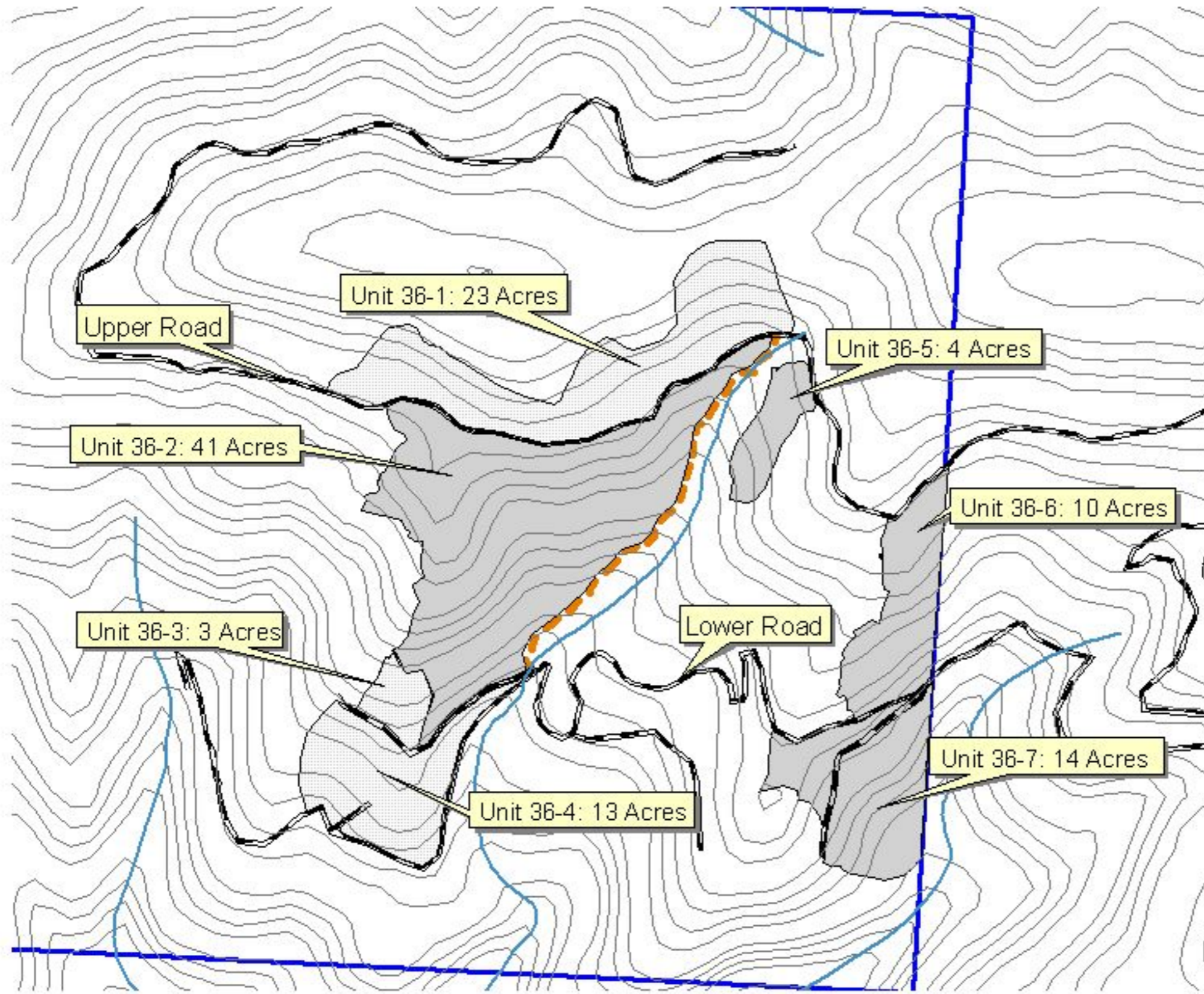


-  Haul Route
-  Cable Units
-  State Ownership
-  New Construction

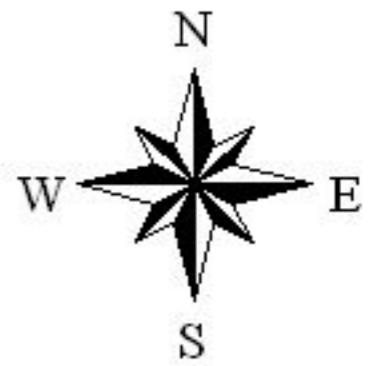


Starving Cramer Salvage Timber Sale

Section 36 T12N R17W



- Haul Route
- Tractor Units
- Cable Units
- SMZ
- State Ownership
- New Construction



Starving Cramer Salvage Timber Sale

Section 34 T12N R16W

Section 36 T12N R17W

