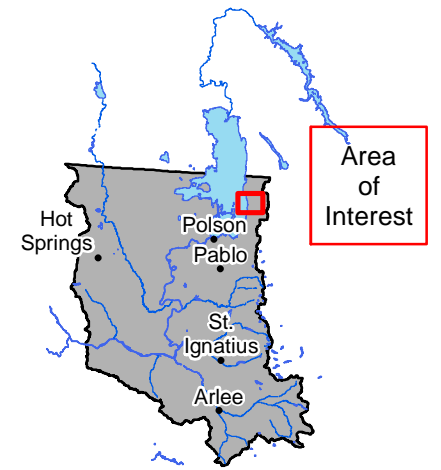


Place of Use
and Point of
Diversion
*Power
Generation*
**76LJ
30052870**
Exhibit 1

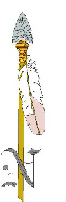


Flathead Indian Reservation

Legend

- Place of Use
- Primary Point(s) of Diversion
- Pipeline
- Reservation Boundary

0 0.25 0.5 Miles



POU/POD Data Source: CSKT-MT Compact Power Generation (available at nris.mt.gov)
 Imagery Source: "Montana 2009 Color NAIP Orthophotos, 12-Kilometer Tiles" courtesy of USDA-Farm Services Agency, Aerial Photography Field Office and the Montana State Library.
 Hillshade created from: "National Elevation Dataset" courtesy of U.S. Geological Survey (USGS), EROS Data Center (1-arc second)

