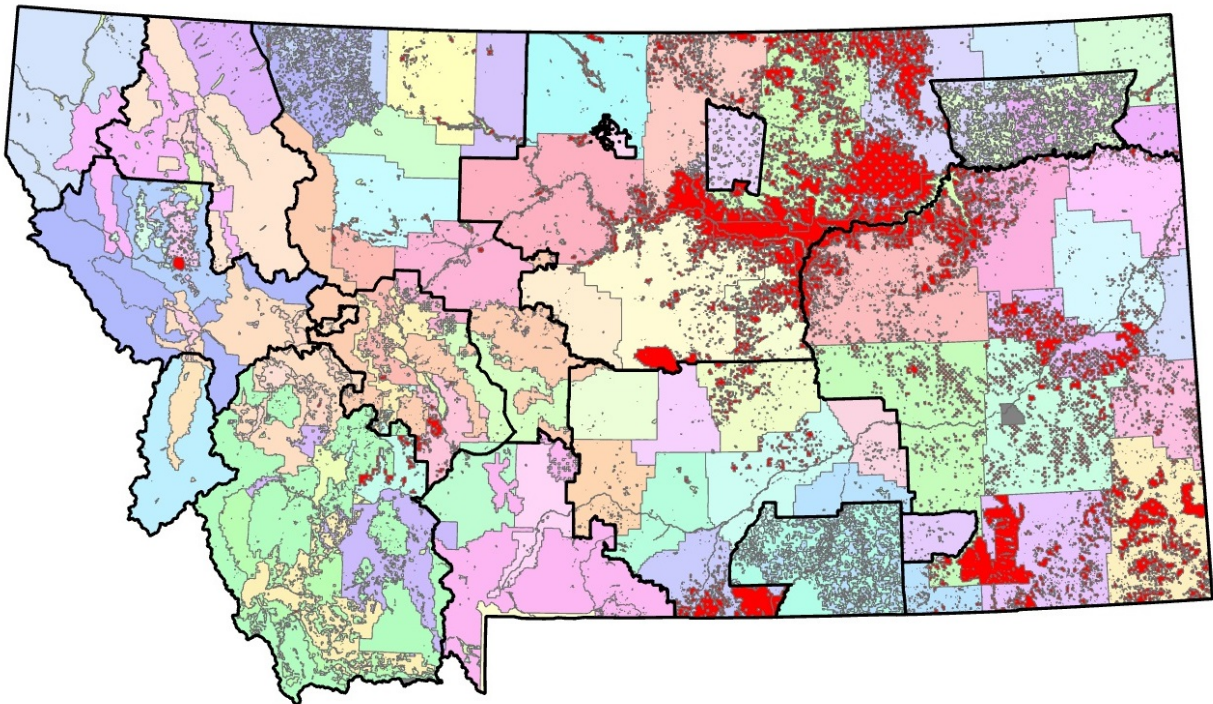


Montana Unit Identifiers



Purpose:

This document is intended to be a resource for fire staff during the transition to InFORM (Interagency Fire Occurrence Reporting Modules) when creating, editing, and certifying a final fire report. With the intent of one fire, one report, and one authoritative data source, we will need to better understand the Jurisdictional and wildland fire Protection responsibilities by Agency across the state. This document breaks out Unit Identifiers by dispatch center boundaries across the state. This document also highlights the 56 County Unit Identifiers that are in place and used across the state.

MTLGXX Unit Identifiers:

For fires occurring on lands not directly protected by a Montana recognized fire protection agency (i.e. BLM, USFS, USF&W, NPS, DNRC or BIA) PROTECTION initially fall to the responsibility of the respective County via the Montana State/County Cooperative Fire Protection (County Coop) arrangement. A MTLGXX should be assigned in these instances. Each County in Montana has an established NWCG Protection Unit ID and Jurisdiction Unit ID.

Agency Duty Officers should be consulted for the appropriate assignment of a PROTECTION Unit Identifier for boundary line fires or mutual response/mutual threat zones (or as identified in a Local Operating Plan).

Note: For private ownership, when populating JURISDICTION use the unit identifier of the County (MTLGXX). For private ownership when populating PROTECTION use the unit identifier of the protecting agency. For State lands not protected by a recognized wildland fire protection agency the protection falls to the County.

Example, a fire occurring on private lands under county protection, in Custer County, MT:

Jurisdictional Agency: C&L (County and Local)
Jurisdictional Unit: MTLG14 (Montana, Custer County)
Protecting Agency: C&L (County and Local)
Protecting Unit: MTLG14 (Montana, Custer County)
Dispatch Local Incident ID: MT-LG14-XXXXXX

Example, a fire occurring on private lands under Federal protection, in Missoula County, MT:

Jurisdictional Agency: C&L (County and Local)
Jurisdictional Unit: MTLG04 (Montana, Missoula County)
Protecting Agency: FS (Forest Service)
Protecting Unit: MTLNF (MT Lolo National Forest)
Dispatch Local Incident ID: MT-LNF-XXXXXX

Example, a fire occurring on State Lands under County protection, in Yellowstone County, MT:

Jurisdictional Agency: DNRC (Department of Natural Resources and Conservation)
Jurisdictional Unit: MTSOS (MT Southern Land Office)
Protecting Agency: C&L (County & Local)
Protecting Unit: MTLG03 (Yellowstone County)
Dispatch Local Incident ID: MT-LG03-XXXXXX

Montana Dispatch Centers:

- Billings Dispatch Center (MT-BDC)
- Bitterroot Dispatch Center (MT-BRC)
- Bozeman Dispatch Center (MT-BZC)
- Dillon Dispatch Center (MT-DDC)
- Great Falls Dispatch Center (MT-GDC)
- Helena Dispatch Center (MT-HDC)
- Kalispell Interagency Dispatch Center (MT-KIC)
- Kootenai Dispatch Center (MT-KDC)
- Lewistown Dispatch Center (MT-LEC)
- Miles City Dispatch Center (MT-MCC)
- Missoula Dispatch Center (MT-MDC)

Agency Unit Identifiers by Dispatch Center (Counties listed separately below):

- Billings Dispatch Center (MT-BDC)
 - Billings Field Office (MT-BID)
 - Custer-Gallatin National Forest (MT-CGF)
 - Crow Agency (MT-CRA)
 - Northeastern Land Office (MT-NES)
 - Southern Land Office (MT-SOS)
- Bitterroot Dispatch Center (MT-BRC)
 - Bitterroot National Forest (MT-BRF)
 - Lee Metcalf National Wildlife Refuge (MT-LMR)
 - Southwestern Land Office (MT-SWS)
- Bozeman Dispatch Center (MT-BZC)
 - Butte Field Office (MT-BUD)
 - Central Land Office-Bozeman Unit (MT-CES)
 - Custer-Gallatin National Forest (MT-CGF)
 - Ennis National Fish Hatchery (MT-EFR)
 - Yellowstone National Park (WY-YNP) – includes MT part of the park.
- Dillon Dispatch Center (MT-DDC)
 - Beaverhead-Deerlodge National Forest (MT-BDF)
 - Big Hole National Battlefield (MT-BHP)
 - Butte Field Office (MT-BUD)
 - Central Land Office (MT-CES)
 - Dillon Field Office (MT-DFD)
 - Grant-Kohrs Ranch National Historic Site (MT-GKP)
 - Red Rock Lakes National Wildlife Refuge (MT-RLR)
 - Southwestern Land Office (MT-SWS)

- Great Falls Dispatch Center (MT-GDC)
 - Blackfeet Agency (MT-BFA)
 - Benton Lake National Wildlife Refuge (MT-BLR)
 - Central Land Office (MT-CES)
 - Fort Belknap Agency (MT-FBA)
 - Helena - Lewis and Clark National Forest (MT-HLF)
 - Rocky Boy Agency (MT-RBA)

- Helena Dispatch Center (MT-HDC)
 - Central Land Office (MT-CES)
 - Helena - Lewis and Clark National Forest (MT-HLF)
 - Southwestern Land Office (MT-SWS)

- Kalispell Interagency Dispatch Center (MT-KIC)
 - Flathead National Forest (MT-FNF)
 - Glacier National Park (MT-GNP)
 - Northwestern Land Office (MT-NWS)

- Kootenai Dispatch Center (MT-KDC)
 - Kootenai National Forest (MT-KNF)
 - Northwestern Land Office (MT-NWS)

- Lewistown Dispatch Center (MT-LEC)
 - Bowdoin National Wildlife Refuge (MT-BWR)
 - Charles M Russell National Wildlife Refuge (MT-CMR)
 - Fort Peck Agency (MT-FPA)
 - Helena-Lewis & Clark National Forest (MT-HLF)
 - Medicine Lake National Wildlife Refuge (MT-MLR)
 - North Central District Office (MT-NCD)
 - Northeastern Land Office (MT-NES)

- Miles City Dispatch Center (MT-MCC)
 - Charles M Russell National Wildlife Refuge (MT-CMR)
 - Custer-Gallatin National Forest (MT-CGF)
 - Eastern Land Office (MT-EAS)
 - Miles City Field Office (MT-MCD)
 - Northern Cheyenne Agency (MT-NCA)
 - Southern Land Office (MT-SOS)

- Missoula Dispatch Center (MT-MDC)
 - Flathead Agency (MT-FHA)
 - Lolo National Forest (MT-LNF)
 - Missoula Field Office (MT-MFD)
 - National Bison Range (MT-NBR)
 - Northwestern Land Office (MT-NWS)
 - Southwestern Land Office (MT-SWS)

County Jurisdiction and Protection Unit Identifiers by Dispatch Center:

- Billings Dispatch Center (MT-BDC)
 - Carbon County (MT-LG10)
 - Golden Valley County (MT-LG53)
 - Musselshell County (MT-LG23)
 - Rosebud County (MT-LG29)
 - Stillwater County (MT-LG32)
 - Sweet Grass County (MT-LG40)
 - Treasure County (MT-LG33)
 - Valley County (MT-LG20)
 - Wheatland County (MT-LG44)
 - Yellowstone County (MT-LG03)

- Bitterroot Dispatch Center (MT-BRC)
 - Ravalli County (MT-LG13)

- Bozeman Dispatch Center (MT-BZC)
 - Carbon County (MT-LG10)
 - Gallatin County (MT-LG06)
 - Madison County (MT-LG25)
 - Meagher County (MT-LG47)
 - Park County (MT-LG49)
 - Sweet Grass County (MT-LG40)

- Dillon Dispatch Center (MT-DDC)
 - Anaconda-Deer Lodge County (MT-LG30)
 - Beaverhead County (MT-LG18)
 - Butte-Silver Bow County (MT-LG01)
 - Granite County (MT-LG46)
 - Jefferson County (MT-LG51)
 - Madison County (MT-LG25)
 - Powell County (MT-LG28)

- Great Falls Dispatch Center (MT-GDC)
 - Blaine County (MT-LG24)
 - Cascade County (MT-LG02)
 - Chouteau County (MT-LG19)
 - Glacier County (MT-LG38)
 - Hill County (MT-LG12)
 - Judith Basin County (MT-LG36)
 - Lewis & Clark County (MT-LG05)
 - Liberty County (MT-LG48)
 - Meagher County (MT-LG47)
 - Phillips County (MT-LG11)
 - Pondera County (MT-LG26)
 - Teton County (MT-LG31)
 - Toole County (MT-LG21)
 - Wheatland County (MT-LG44)

- Helena Dispatch Center (MT-HDC)
 - Broadwater County (MT-LG43)
 - Cascade County (MT-LG02)
 - Glacier County (MT-LG38)
 - Jefferson County (MT-LG51)
 - Lewis & Clark County (MT-LG05)
 - Liberty County (MT-LG48)
 - Meagher County (MT-L47)
 - Pondera County (MT-LG26)
 - Teton County (MT-LG31)
 - Toole County (MT-LG21)

- Kalispell Dispatch Center (MT-KIC)
 - Lincoln County (MT-LG56)
 - Flathead County (MT-LG07)
 - Glacier County (MT-LG38)
 - Lake County (MT-LG15)
 - Missoula County (MT-LG04)
 - Powell County (MT-LG28)
 - Sanders County (MT-LG35)

- Kootenai Dispatch Center (MT-KDC)
 - Flathead County (MT-LG07)
 - Lincoln County (MT-LG56)
 - Sanders County (MT-LG35)

- Lewistown Dispatch Center (MT-LEC)
 - Blaine County (MT-LG24)
 - Chouteau County (MT-LG19)
 - Daniels County (MT-LG37)
 - Fergus County (MT-LG08)
 - Hill County (MT-LG12)
 - Judith Basin County (MT-LG36)
 - Petroleum County (MT-LG55)
 - Phillips County (MT-LG11)
 - Roosevelt County (MT-LG17)
 - Sheridan County (MT-LG34)
 - Valley County (MT-LG20)

- Miles City Dispatch Center (MT-MCC)
 - Big Horn County (MT-LG22)
 - Carter County (MT-LG42)
 - Custer County (MT-LG14)
 - Dawson County (MT-LG16)
 - Fallon County (MT-LG39)
 - Garfield County (MT-LG50)
 - McCone County (MT-LG41)
 - Powder River County (MT-LG09)
 - Prairie County (MT-LG45)
 - Richland County (MT-LG27)
 - Rosebud County (MT-LG29)
 - Wibaux County (MT-LG52)

- Missoula Dispatch Center (MT-MDC)
 - Granite County (MT-LG46)
 - Lake County (MT-LG15)
 - Lewis & Clark County (MT-LG05)
 - Mineral County (MT-LG54)
 - Missoula County (MT-LG04)
 - Powell County (MT-LG28)
 - Ravalli County (MT-LG13)
 - Sanders County (MT-LG35)

MT County Jurisdiction and Protection Unit Identifiers, with County Seat:

MT-LG01	Butte-Silver Bow	Butte
MT-LG02	Cascade	Great Falls
MT-LG03	Yellowstone	Billings
MT-LG04	Missoula	Missoula
MT-LG05	Lewis & Clark	Helena
MT-LG06	Gallatin	Bozeman
MT-LG07	Flathead	Kalispell
MT-LG08	Fergus	Lewistown
MT-LG09	Powder River	Broadus
MT-LG10	Carbon	Red Lodge
MT-LG11	Phillips	Malta
MT-LG12	Hill	Havre
MT-LG13	Ravalli	Hamilton
MT-LG14	Custer	Miles City
MT-LG15	Lake	Polson
MT-LG16	Dawson	Glendive
MT-LG17	Roosevelt	Wolf Point
MT-LG18	Beaverhead	Dillon
MT-LG19	Chouteau	Fort Benton
MT-LG20	Valley	Glasgow
MT-LG21	Toole	Shelby
MT-LG22	Big Horn	Hardin
MT-LG23	Musselshell	Roundup
MT-LG24	Blaine	Chinook
MT-LG25	Madison	Virginia City
MT-LG26	Pondera	Conrad
MT-LG27	Richland	Sidney
MT-LG28	Powell	Deer Lodge
MT-LG29	Rosebud	Forsyth
MT-LG30	Anaconda-Deer Lodge	Anaconda
MT-LG31	Teton	Choteau
MT-LG32	Stillwater	Columbus
MT-LG33	Treasure	Hysham
MT-LG34	Sheridan	Plentywood
MT-LG35	Sanders	Thompson Falls
MT-LG36	Judith Basin	Stanford
MT-LG37	Daniels	Scobey
MT-LG38	Glacier	Cut Bank
MT-LG39	Fallon	Baker
MT-LG40	Sweet Grass	Big Timber
MT-LG41	McCone	Circle

MT-LG42	Carter	Ekalaka
MT-LG43	Broadwater	Townsend
MT-LG44	Wheatland	Harlowton
MT-LG45	Prairie	Terry
MT-LG46	Granite	Philipsburg
MT-LG47	Meagher	White Sulphur Springs
MT-LG48	Liberty	Chester
MT-LG49	Park	Livingston
MT-LG50	Garfield	Jordan
MT-LG51	Jefferson	Boulder
MT-LG52	Wibaux	Wibaux
MT-LG53	Golden Valley	Ryegate
MT-LG54	Mineral	Superior
MT-LG55	Petroleum	Winnett
MT-LG56	Lincoln	Libby