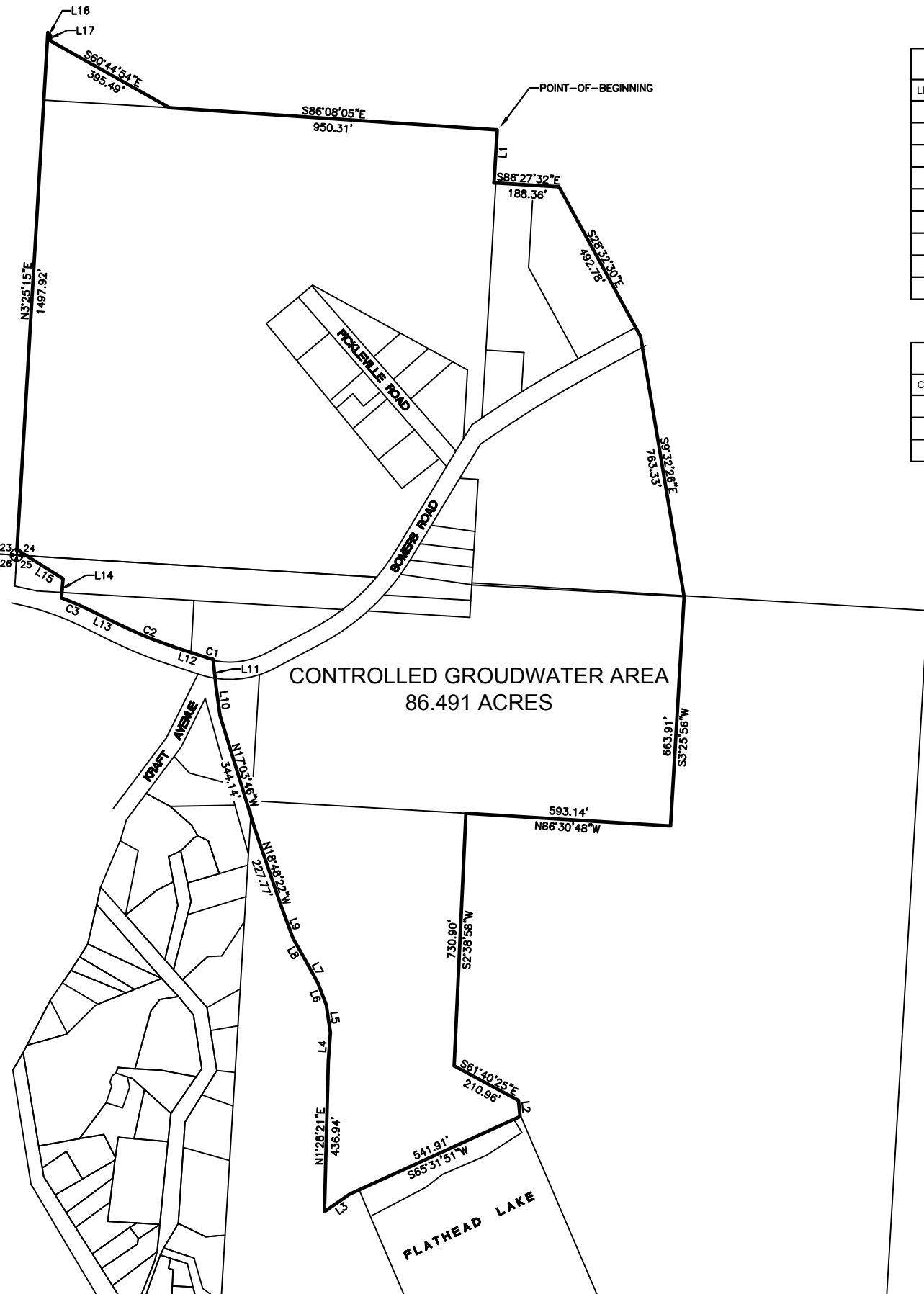


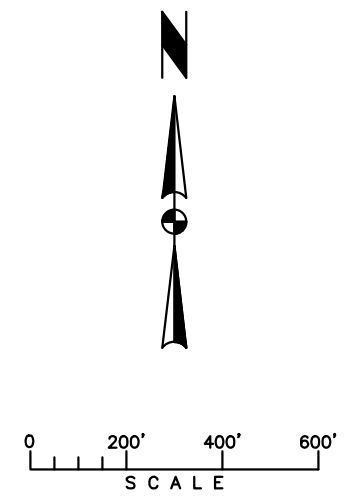
J:\2018\K18-031 AECOM - Somers CGA Boundary\010\CADD\CIVIL\K18-031 bm.dwg, 6/14/2018 8:58:09 AM, RJS



LINE LABEL		
LINE #	BEARING	DISTANCE
L1	S3°25'04"W	153.61'
L2	S6°10'44"E	47.13'
L3	S55°10'30"W	88.93'
L4	N4°09'55"E	81.46'
L5	N8°26'19"W	81.44'
L6	N20°52'32"W	67.04'
L7	N28°38'20"W	74.04'
L8	N29°37'53"W	73.85'
L9	N20°06'06"W	106.72'

LINE LABEL		
LINE #	BEARING	DISTANCE
L10	N8°00'21"W	83.55'
L11	N6°12'39"W	80.22'
L12	N71°58'32"W	102.00'
L13	N63°51'32"W	108.50'
L14	N4°51'10"E	55.89'
L15	N57°40'48"W	157.39'
L16	S42°24'16"E	11.60'
L17	S3°51'59"W	15.18'

CURVE TABLE					
CURVE	RADIUS	DELTA	ARC LENGTH	CHORD BEARING	CHORD LENGTH
C1	218.11'	5°05'40"	19.39'	N74°31'22"W	19.39'
C2	1114.92'	8°07'00"	157.94'	N67°55'02"W	157.81'
C3	826.85'	5°59'28"	86.46'	N66°51'16"W	86.42'



**DESCRIPTION – CONTROLLED GROUNDWATER AREA**

A parcel of land located in the Southwest quarter of Section 24 and in the Northwest quarter of Section 25, Township 27 North, Range 21 West, P.M.M., Flathead County, Montana, being more particularly described as follows:

Commencing at the Northeast corner of the Southwest quarter of the Southwest quarter of said Section 24 and the POINT-OF-BEGINNING; thence S 03°25'04" W a distance of 153.61 feet; thence S 86°27'32" E a distance of 188.36 feet; thence S 28°32'30" E a distance of 492.78 feet; thence S 09°32'26" E a distance of 763.33 feet; thence S 03°25'56" W a distance of 663.91 feet; thence N 86°30'48" W a distance of 593.14 feet; thence S 02°38'58" W a distance of 730.90 feet; thence S 61°40'25" E a distance of 210.96 feet; thence S 06°10'44" E a distance of 47.13 feet; thence S 65°31'51" W a distance of 541.91 feet; thence S 55°10'30" W a distance of 88.93 feet; thence N 01°28'21" E a distance of 436.94 feet; thence N 04°09'55" E a distance of 81.46 feet; thence N 08°26'19" W a distance of 81.44 feet; thence N 20°52'32" W a distance of 67.04 feet; thence N 28°38'20" W a distance of 74.04 feet; thence N 29°37'53" W a distance of 73.85 feet; thence N 20°06'06" W a distance of 106.72 feet; thence N 18°48'22" W a distance of 227.77 feet; thence N 17°03'46" W a distance of 344.14 feet; thence N 08°00'21" W a distance of 83.55 feet; thence N 06°12'39" W a distance of 80.22 feet; thence with a curve turning to the right with a delta angle of 05°05'40", with an arc length of 19.39 feet, with a radius of 218.11 feet, with a chord bearing of N 74°31'22" W, with a chord length of 19.39 feet; thence N 71°58'32" W a distance of 102.00 feet; thence with a curve turning to the right with a delta angle of 08°07'00", with an arc length of 157.94 feet, with a radius of 1114.92 feet, with a chord bearing of N 67°55'02" W, with a chord length of 157.81 feet; thence N 63°51'32" W a distance of 108.50 feet; thence with a curve turning to the left with a central angle of 05°59'28", with an arc length of 86.46 feet, with a radius of 826.85 feet, with a chord bearing of N 66°51'16" W, with a chord length of 86.42 feet; thence N 04°51'10" E a distance of 55.89 feet; thence N 57°40'48" W a distance of 157.39 feet; thence N 03°25'15" E a distance of 1497.92 feet; thence S 42°24'16" E a distance of 11.60 feet; thence S 03°51'59" W a distance of 15.18 feet; thence S 60°44'54" E a distance of 395.49 feet; thence S 86°08'05" E a distance of 950.31 feet to the POINT-OF-BEGINNING, containing 86.491 acres.

REV	DATE	REVISION

**TD&H**  
Engineering  
406.751.5246 • tchenengineering.com  
450 CORPORATE DR., SUITE 101 • KALISPELL, MONTANA 59901

DRAWN BY: RJS  
DESIGNED BY:  
QUALITY CHECK:  
DATE: JUNE, 2018  
JOB NO. K18-031  
FIELDBOOK

BURLINGTON NORTHERN & SANTA FE RAILWAY  
SOMERS, MONTANA  
**CONTROLLED GROUNDWATER AREA**