

WATER RESOURCES SURVEY STILLWATER COUNTY, MONTANA

PART II

Maps showing irrigated areas in colors
designating the sources of supply



Published by
STATE ENGINEER
and

STATE WATER CONSERVATION BOARD

Helena, Montana

May, 1946

RECORDS
MANAGEMENT
WRS COPY

YELLOWSTONE RIVER
COMPACT COMMISSION
PERMANENT FILE

Water Resources Survey
Stillwater County
Montana

Part II
Maps Showing Irrigated Areas

Published by
STATE ENGINEER
and
STATE WATER CONSERVATION BOARD
Helena, Montana
May, 1946

STATE ENGINEER'S OFFICE

State Engineer - - - - - Fred E. Buck
Assistant - - - - - Gerald J. Oravetz

STATE WATER CONSERVATION BOARD

Governor Sam C. Ford - - - - - Chairman
O. S. Warden - - - - - Vice-Chairman
D. P. Fabrick - - - - - Member
C. H. Raymond - - - - - Member
Fred E. Buck - - - - - Member and Chief Engineer
R. J. Kelly - - - - - Assistant Secretary

MONTANA STATE AGRICULTURAL EXPERIMENT STATION

O. W. Monson - Irrigation Engineer, Consultant and Project Leader, Bozeman

May, 1946

Hon. Sam C. Ford
Capitol Building
Helena, Montana

Dear Governor Ford:

Submitted herewith is a consolidated report on the water resources survey of Stillwater County, Montana. This work is being carried on by funds made available to the State Engineer and the State Water Conservation Board by the 29th Legislative Session, 1945.

The report is divided into two booklets—part one consisting of the history of land and water use, irrigated lands, water rights, etc., while part two contains all of the township maps showing in color the lands irrigated from each canal.

The office files contain minute descriptions and details of each individual water right, water and land use, etc., which are too voluminous to be included herein. These office files are available for inspection to those who are interested.

Mr. Gerald J. Oravetz, Assistant State Engineer, has directed the detail office and field work of this project and is entitled to much credit for the excellent accomplishment.

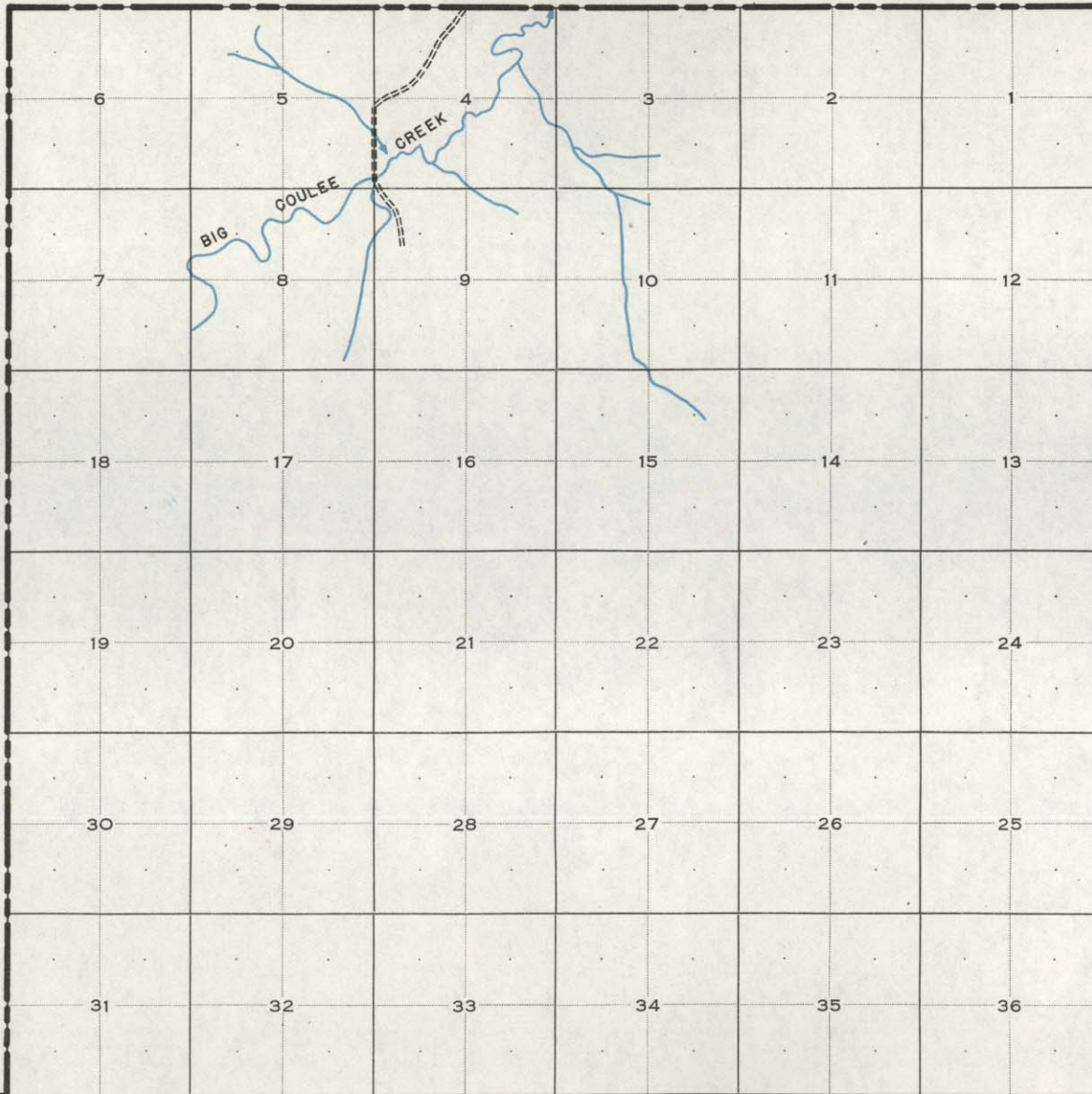
Respectfully submitted,

FRED E. BUCK,
State Engineer.



GOLDEN VALLEY COUNTY

GOLDEN VALLEY COUNTY



LEGEND

==== COUNTY ROADS

T. 4 N-R. 18 E
T. 3 N-R. 18 E



Township No. 2 NORTH

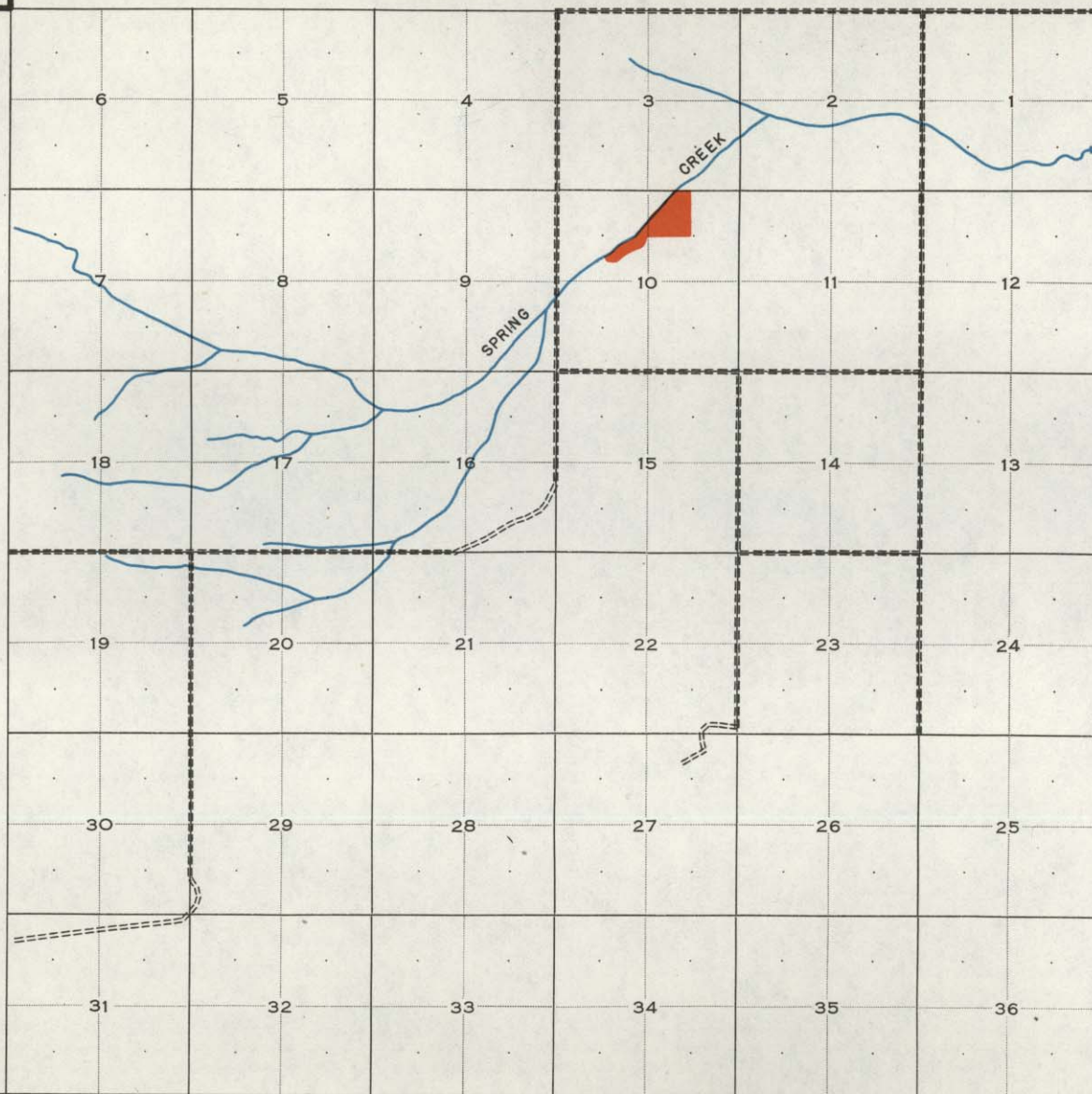
Range No. 19 EAST

County STILLWATER


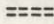
T. 2 NORTH

R. 19 EAST

SWEET GRASS
COUNTY



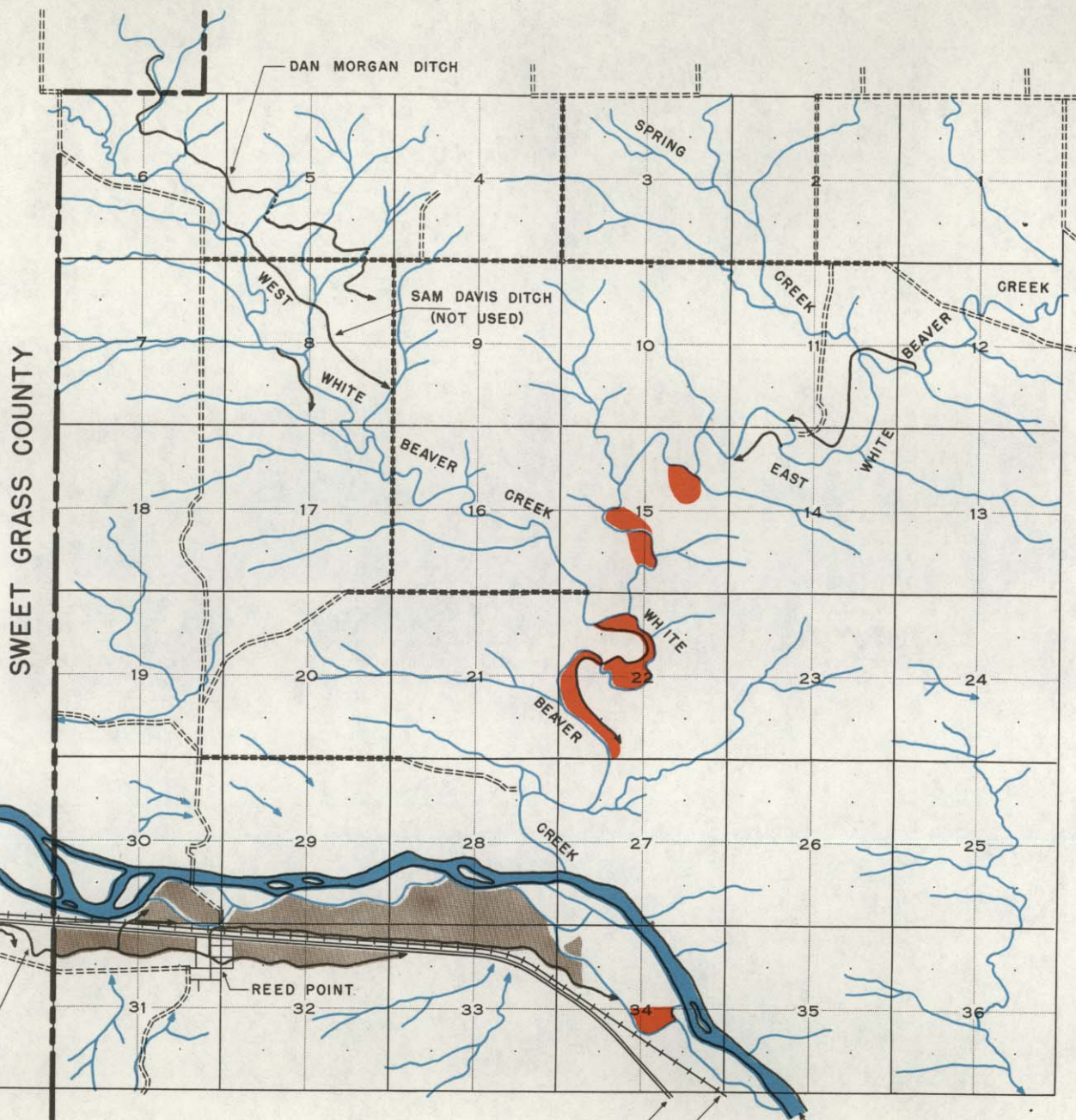
LEGEND

-  PRIVATE
-  COUNTY ROADS


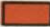
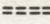
T. 2 N.-R. 18 E
T. 1 N.-R. 18 E



T 1 N-R. 19 E
T 1 S-R. 20 E



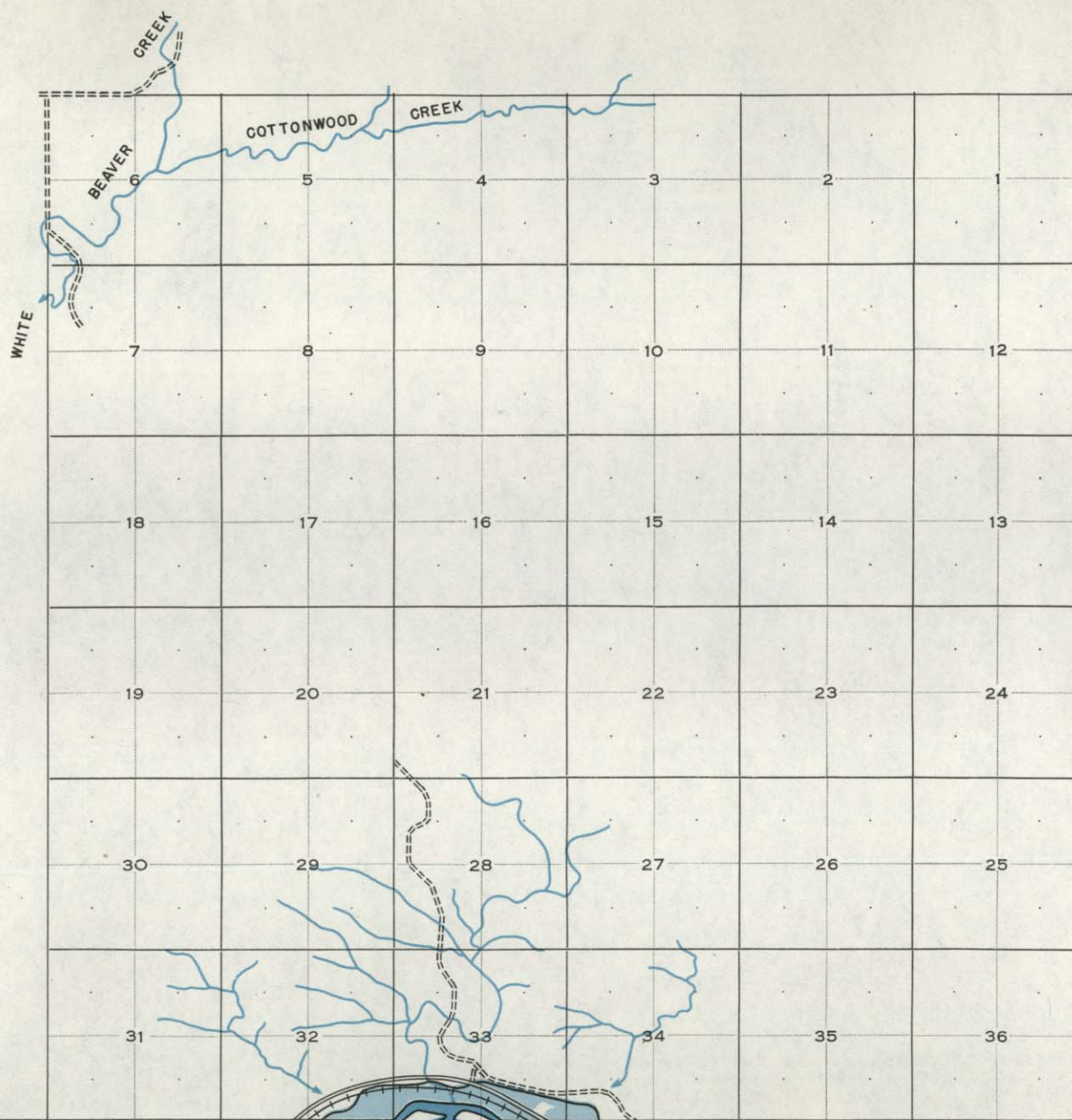
LEGEND

-  REED POINT DITCH
-  PRIVATE
-  COUNTY ROADS

SWEET GRASS COUNTY

T. 1 S-R. 17 E
T. 2 S-R. 17 E

U.S. HWY. NO. 10
N.P.R.R. YELLOWSTONE RIVER



LEGEND

- MERRILL
- COUNTY ROADS

T. 1 S-R. 18 E

T. 2 S-R. 18 E

U.S. HWY. NO. 10
 N. P. R. R.

MERRILL-COLUMBUS DITCH
 YELLOWSTONE RIVER



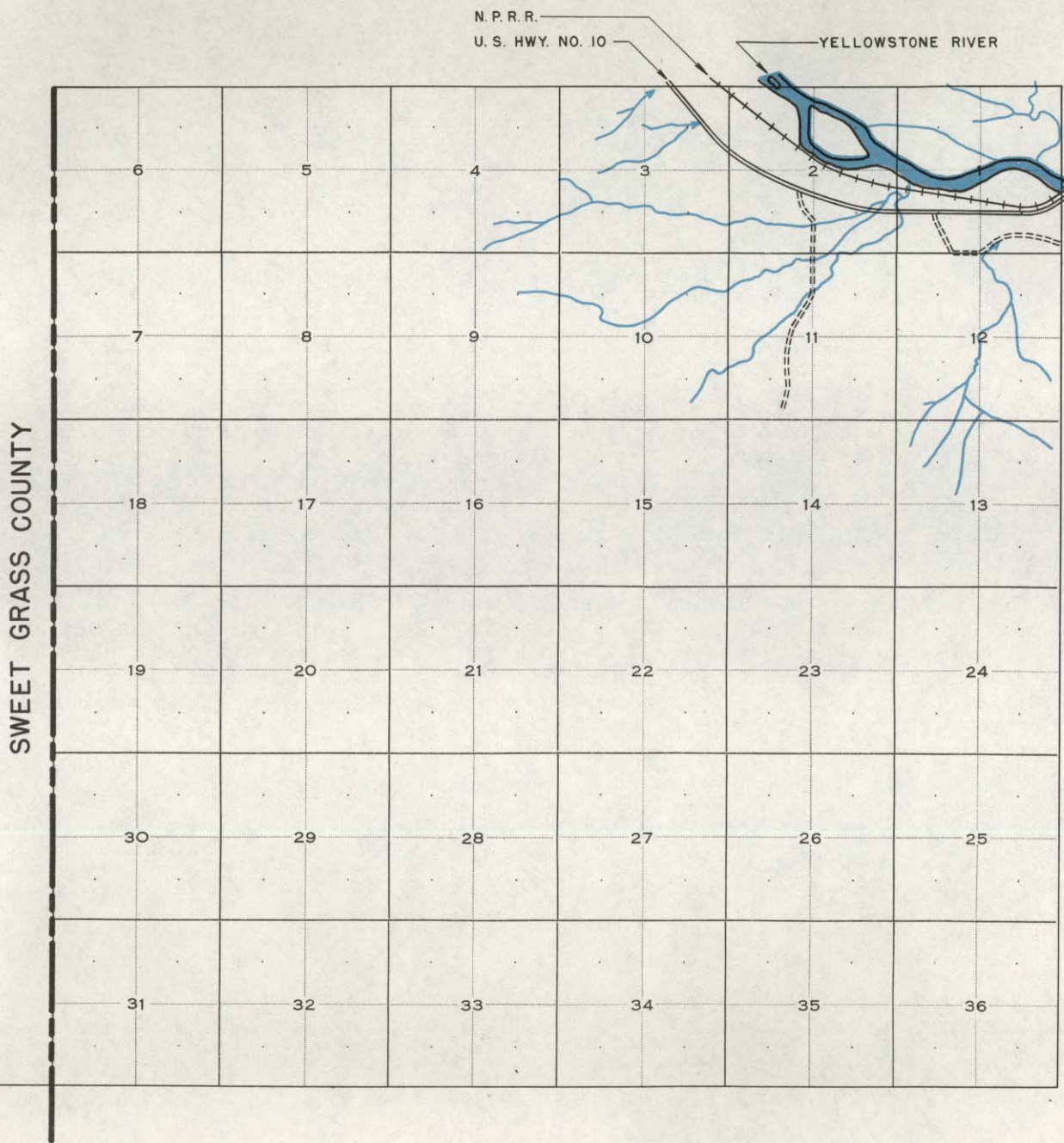
Township No. 2 SOUTH

Range No. 18 EAST

County STILLWATER

T. 2 SOUTH

R. 18 EAST



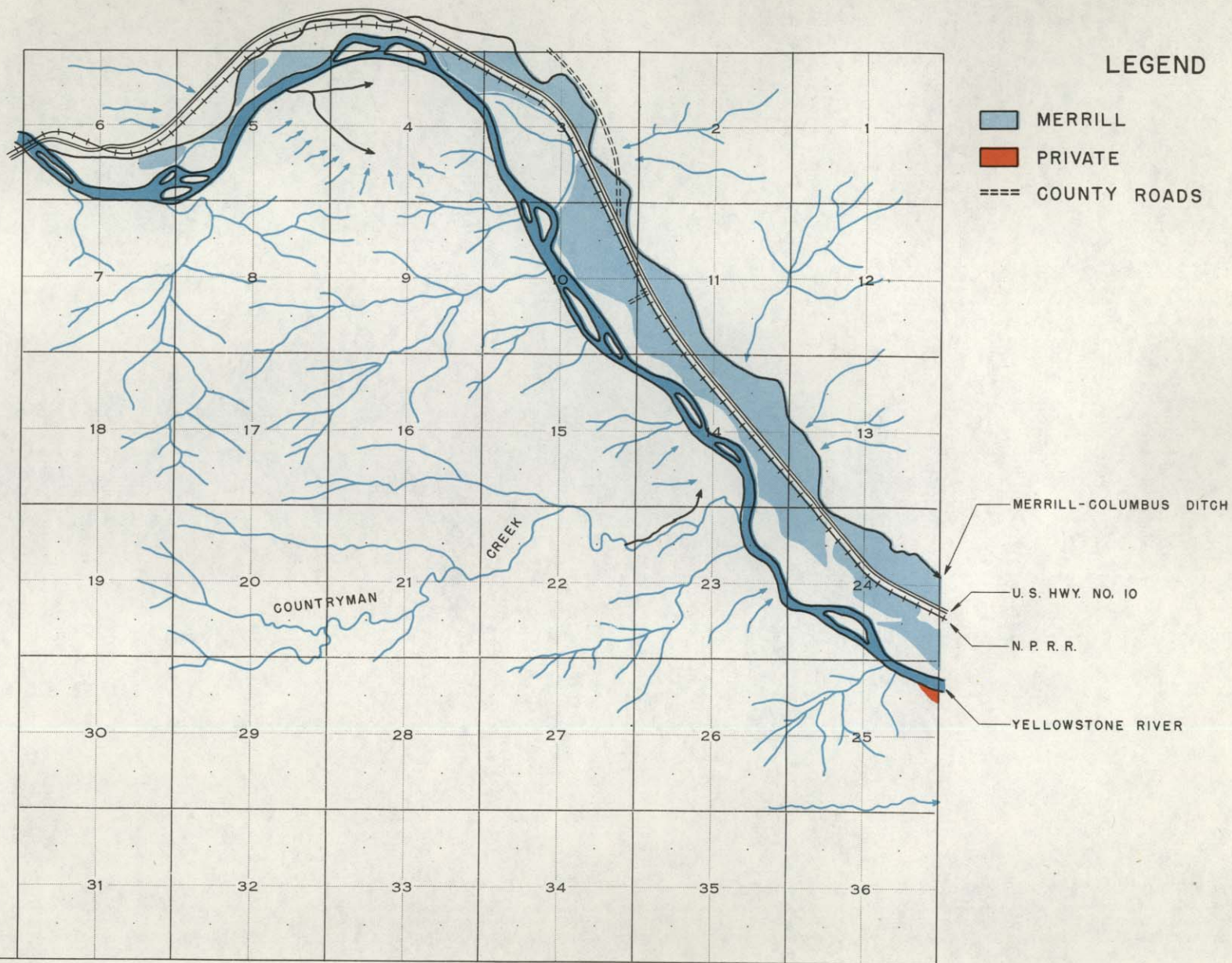
LEGEND

==== COUNTY ROADS

T. 2 S-R. 17 E

T. 3 S-R. 17 E

10



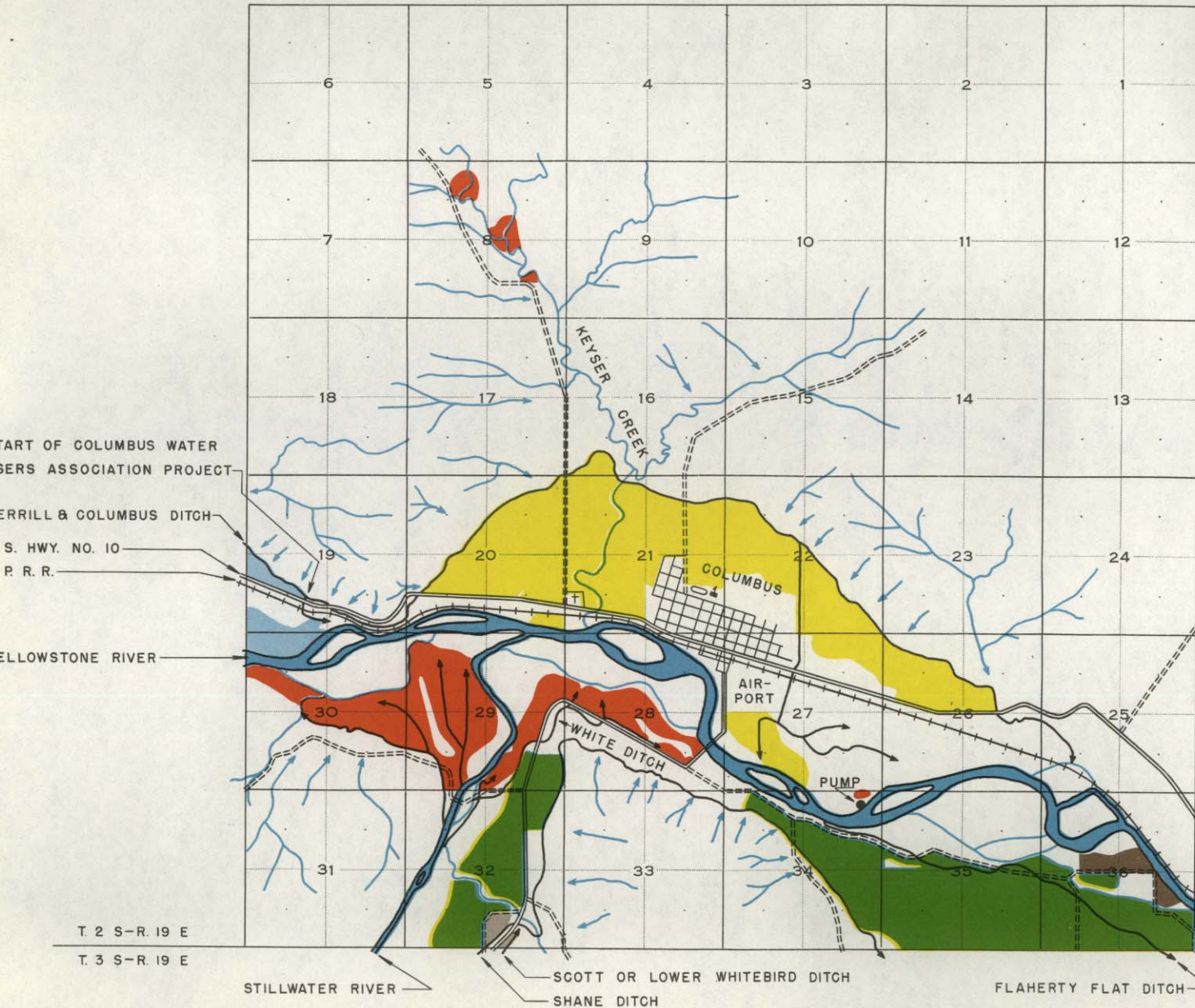
T. 2 S-R. 18 E

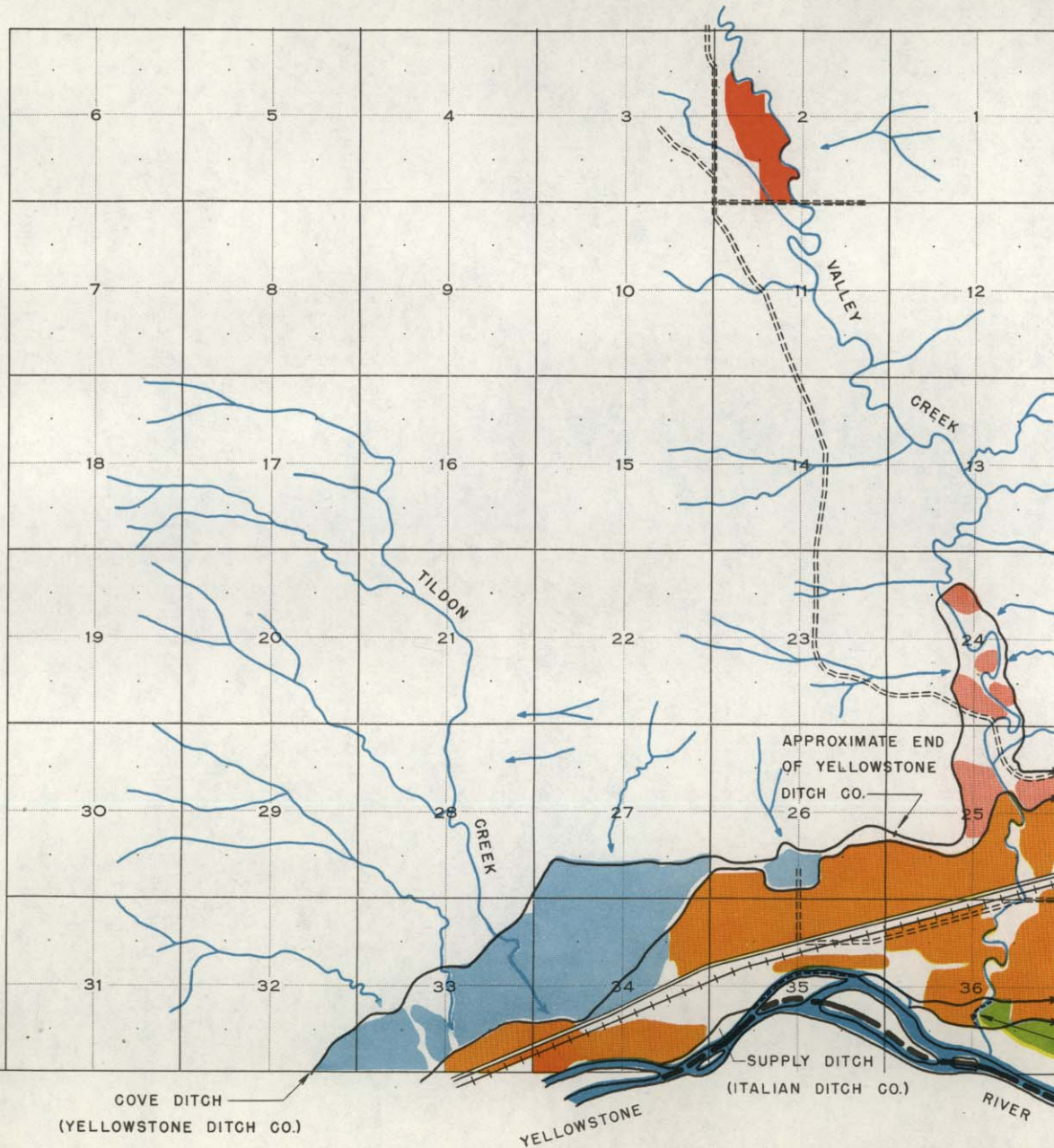
T. 3 S-R. 18 E



LEGEND

- C. W. U. A.
- FLAHERTY FLAT
- MERRILL
- SCOTT OR LOWER WHITEBIRD
- SHANE
- PRIVATE
- COUNTY ROADS





LEGEND

- BIG
- COVE
- ITALIAN
- YELLOWSTONE DITCH CO.
- PRIVATE
- COUNTY ROADS

T. 2 S-R. 21 E
 T. 3 S-R. 21 E

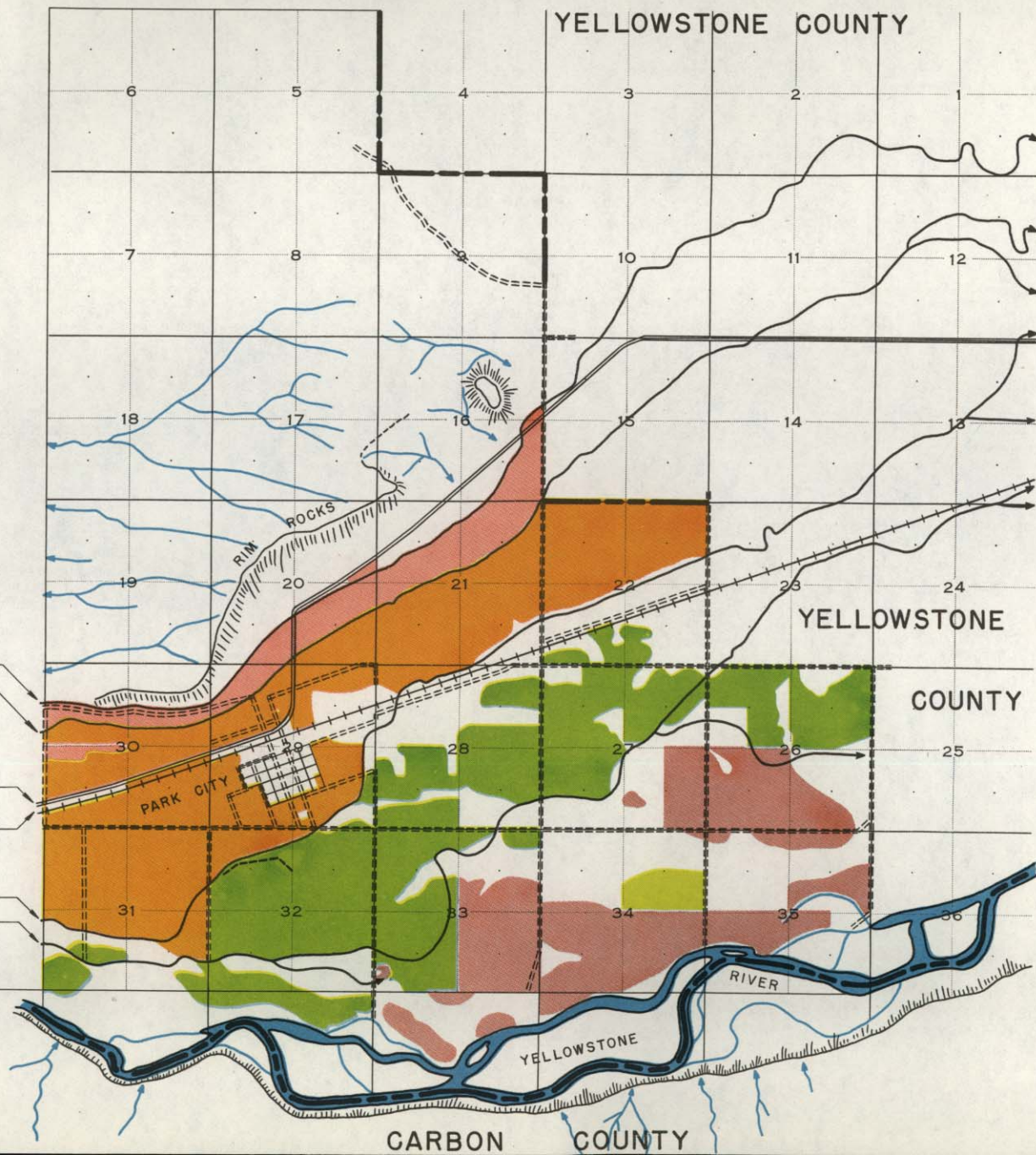
COVE DITCH
 (YELLOWSTONE DITCH CO.)

YELLOWSTONE RIVER

SUPPLY DITCH
 (ITALIAN DITCH CO.)

- COVE DITCH
- BIG DITCH
- U.S. HWY. NO. 10
- N. P. R. R.
- ITALIAN DITCH
- OLD MILL DITCH

NOTE- ITALIAN AND OLD MILL NOW USE SAME HEADGATE. WATER IS SPILLED DOWN VALLEY CREEK INTO OLD MILL.



LEGEND

- BIG
- COVE
- ITALIAN
- OLD MILL
- COUNTY ROADS
- DRAIN DITCH

COVE DITCH
BIG DITCH

U. S. HWY. NO. 10
N. P. R. R.

ITALIAN DITCH
OLD MILL DITCH

T. 2 S-R. 22 E
T. 3 S-R. 22 E

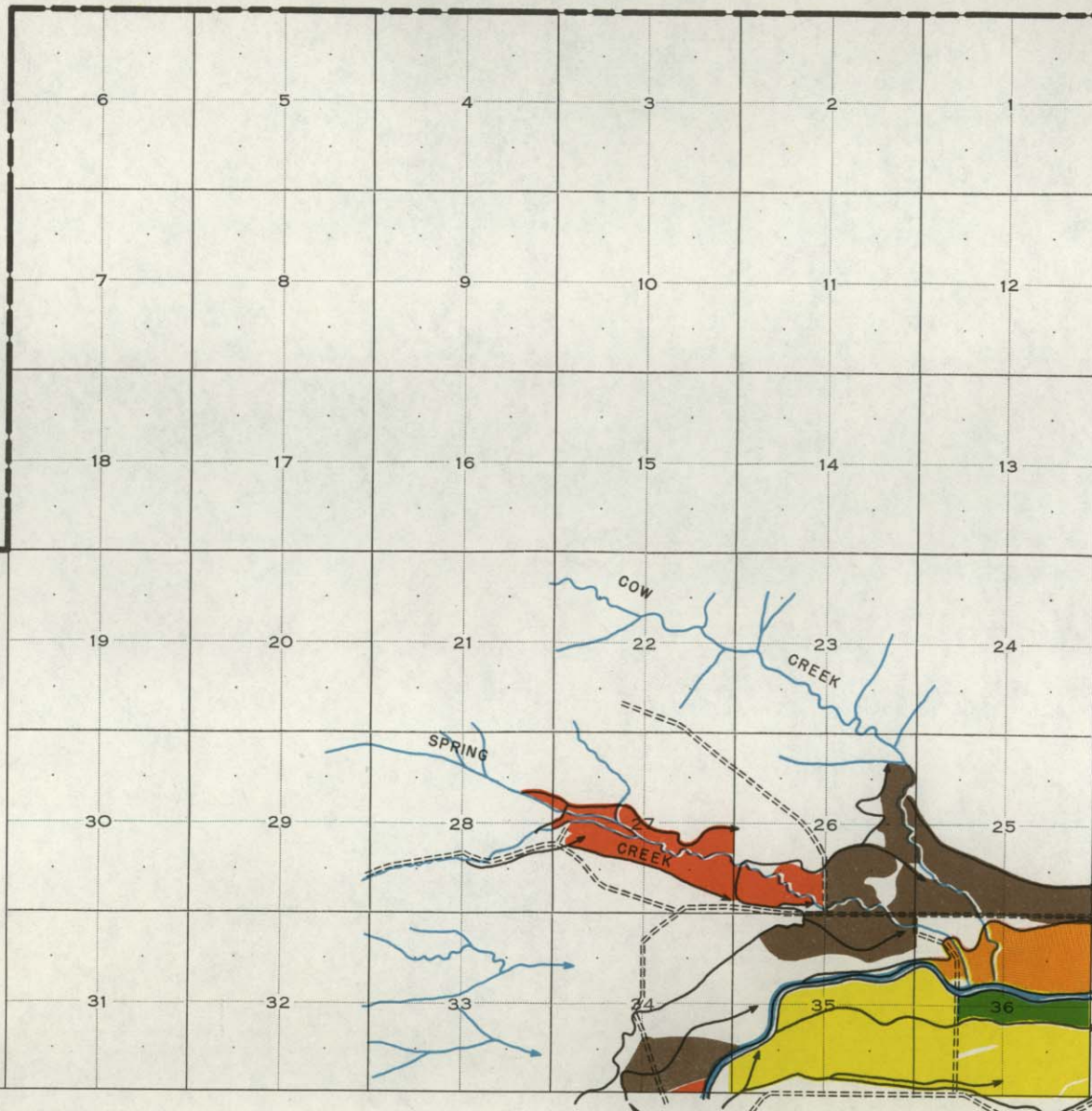


SWEET GRASS COUNTY

SWEET GRASS COUNTY

LEGEND

- BREY-RIDDLE
- LARSON-JOHNSON
- PHELPS
- STILLWATER DITCH CO.
- PRIVATE
- COUNTY ROADS



- STILLWATER DITCH CO.
- LARSON-JOHNSON DITCH
- STILLWATER RIVER
- PHELPS DITCH
- BREY-RIDDLE DITCH

T. 3 S-R. 16 E
T. 4 S-R. 16 E

MADISON DITCH



Township No. 3 SOUTH

Range No. 18 EAST

County STILLWATER

T. 3 SOUT

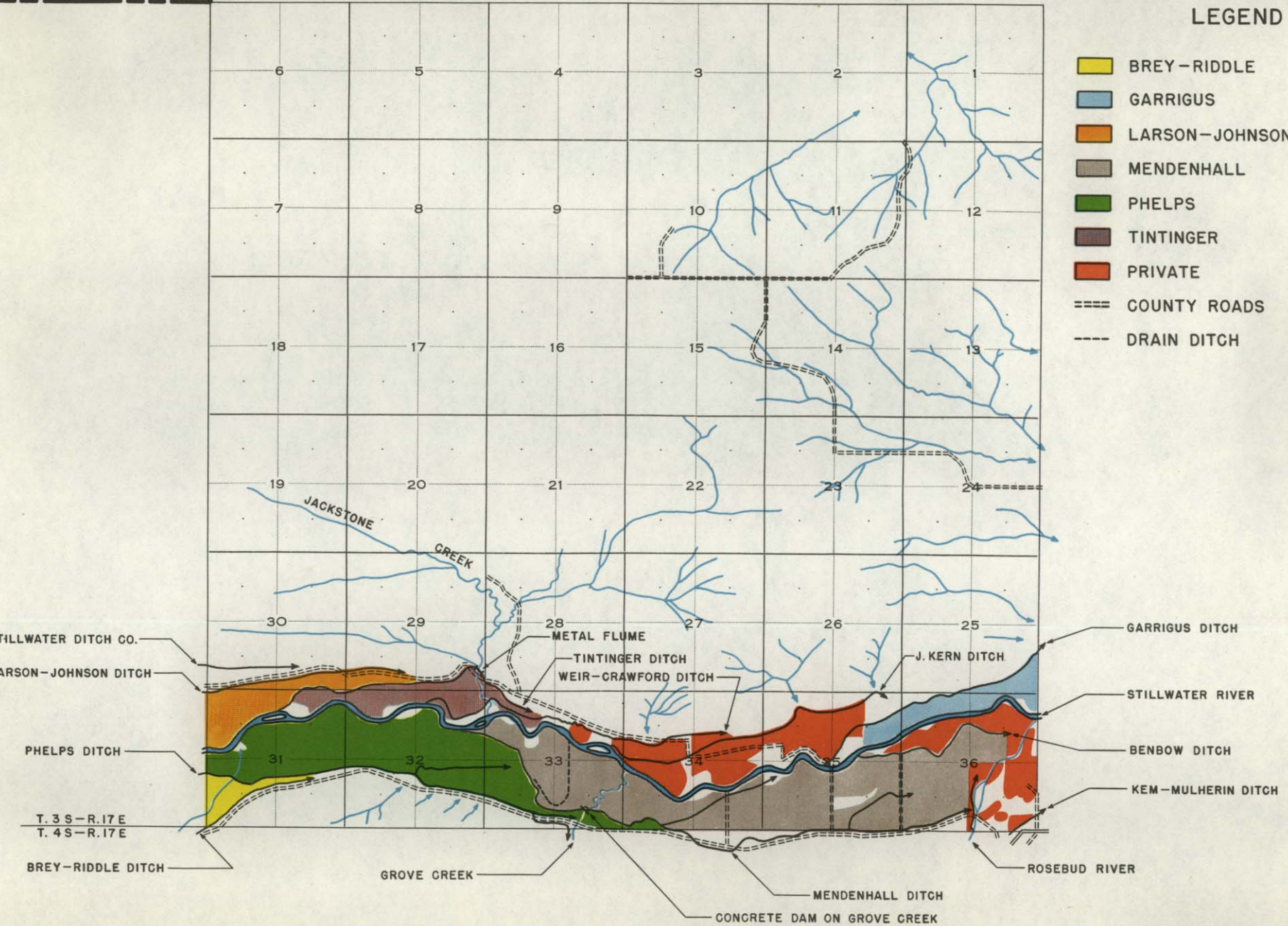
R. 18 EAS

SWEET GRASS

COUNTY




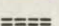
LEGEND

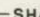
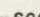

- BREY-RIDDLE
- GARRIGUS
- LARSON-JOHNSON
- MENDENHALL
- PHELPS
- TINTINGER
- PRIVATE
- COUNTY ROADS
- DRAIN DITCH

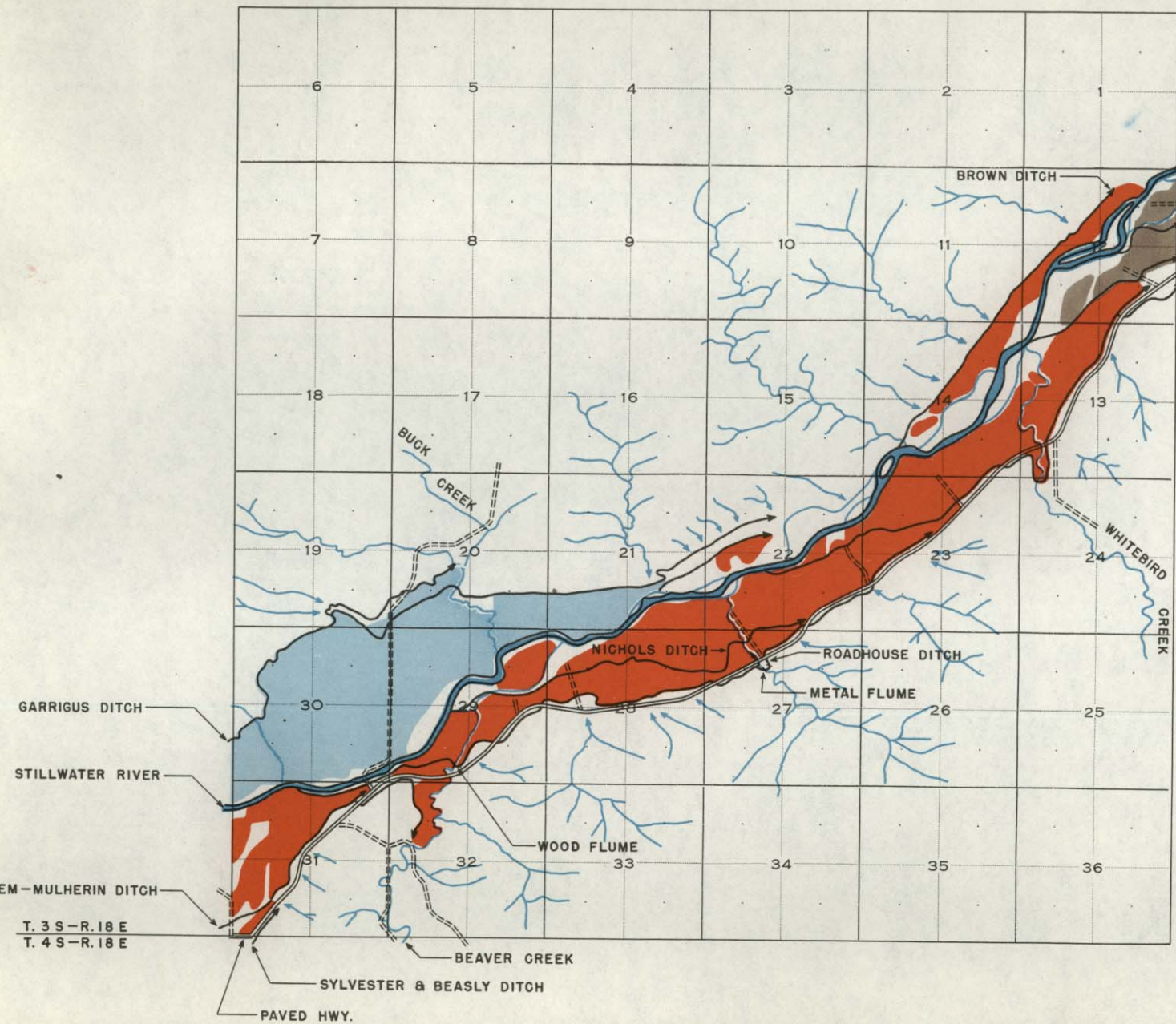




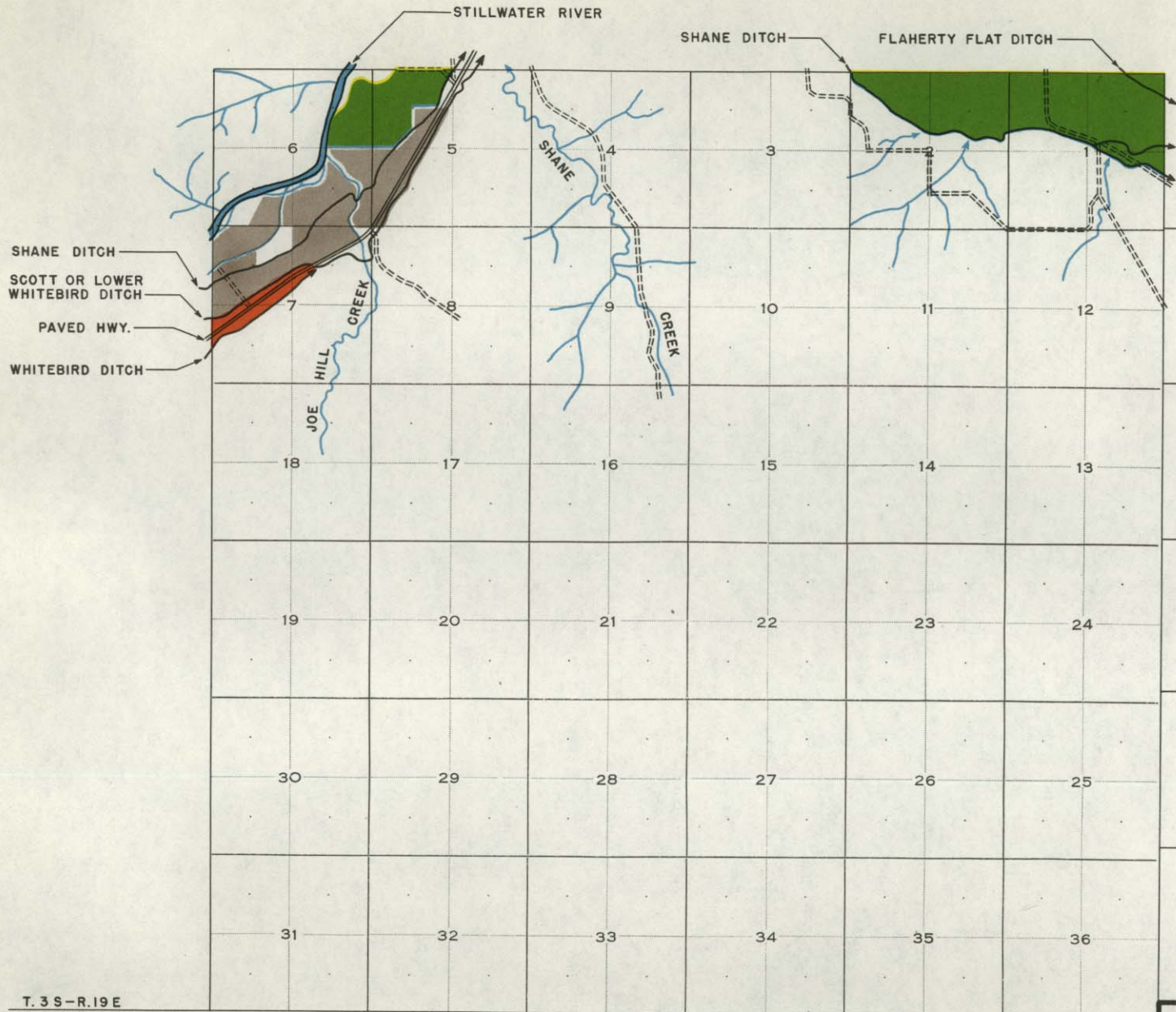
LEGEND

-  GARRIGUS
-  SCOTT OR LOWER WHITEBIRD
-  PRIVATE
-  COUNTY ROADS

-  SHANE DITCH
-  SCOTT OR LOWER WHITEBIRD DITCH
-  WHITEBIRD DITCH



T. 3 S - R. 18 E
T. 4 S - R. 18 E



LEGEND

- SCOTT OR LOWER WHITEBIRD
- SHANE
- PRIVATE
- COUNTY ROADS

SHANE DITCH
 SCOTT OR LOWER
 WHITEBIRD DITCH
 PAVED HWY.
 WHITEBIRD DITCH

STILLWATER RIVER

SHANE DITCH

FLAHERTY FLAT DITCH

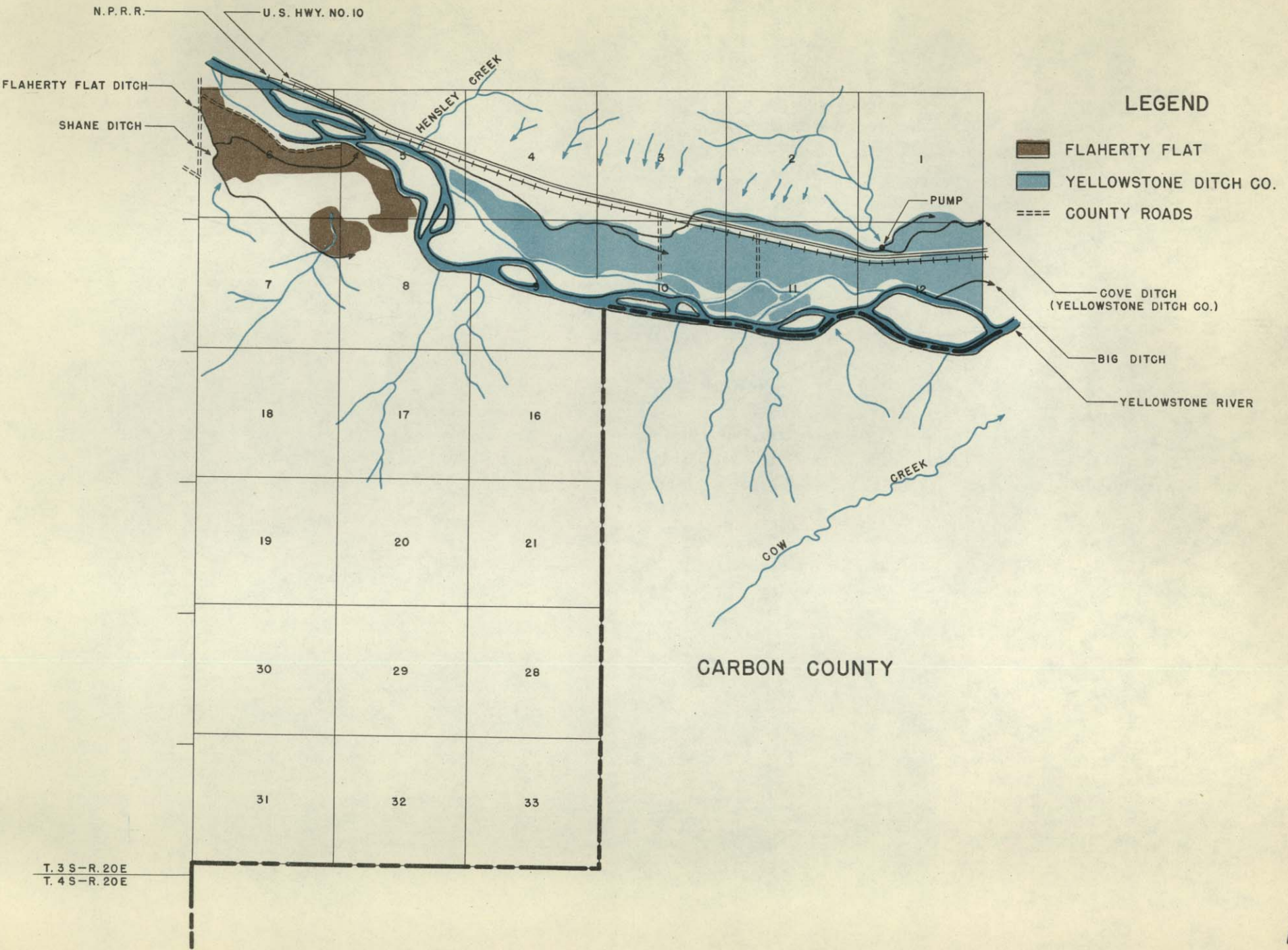
SHANE

JOE HILL CREEK

CREEK

T. 3 S-R. 19 E
 T. 4 S-R. 19 E

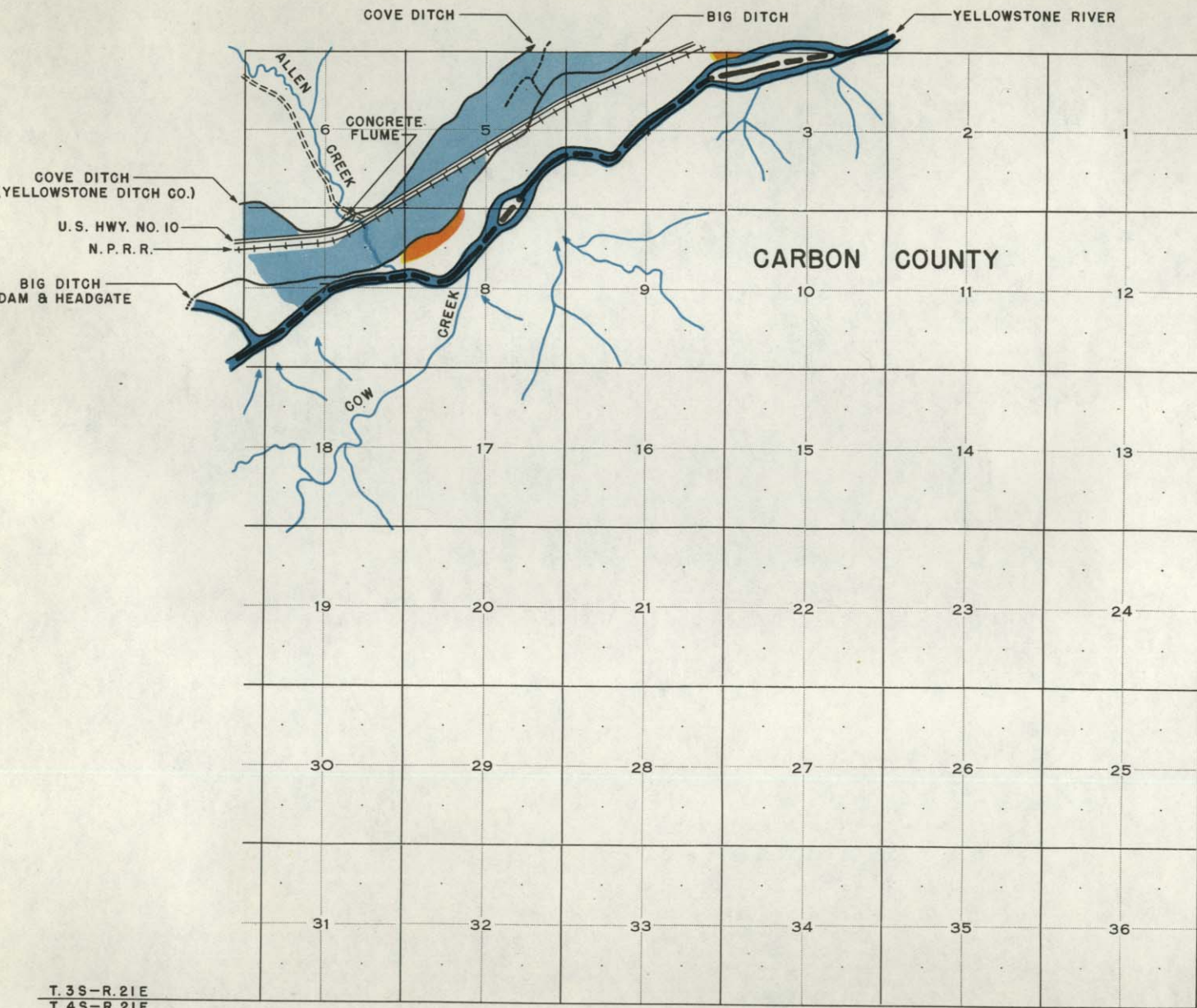
CARBON
 COUNTY



LEGEND

- FLAHERTY FLAT
- YELLOWSTONE DITCH CO.
- COUNTY ROADS
- COVE DITCH (YELLOWSTONE DITCH CO.)
- BIG DITCH
- YELLOWSTONE RIVER

T. 3 S - R. 20 E
T. 4 S - R. 20 E



LEGEND

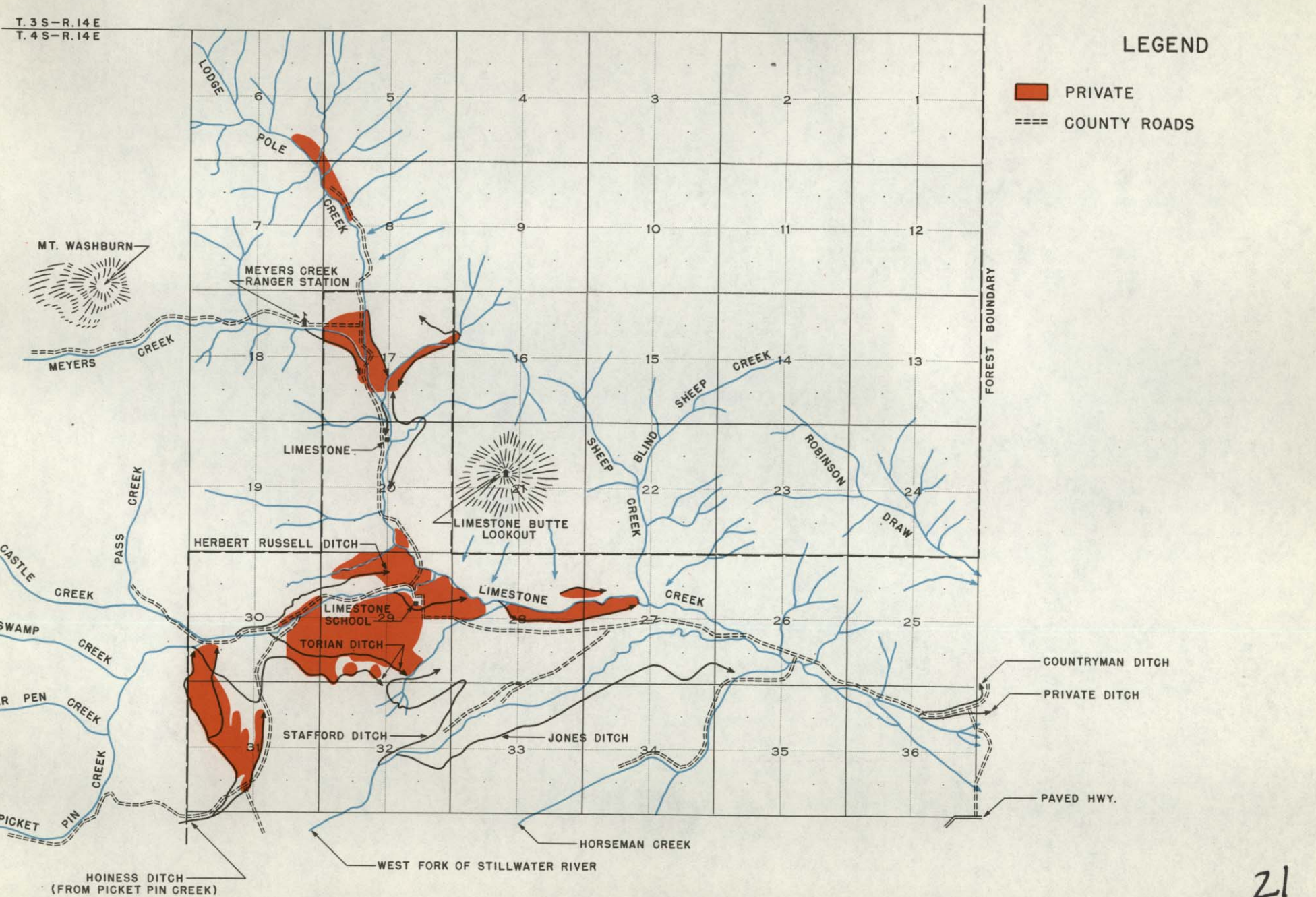
- BIG
- YELLOWSTONE DITCH CO.
- COUNTY ROADS
- DRAIN DITCH



LEGEND

- PRIVATE
- COUNTY ROADS

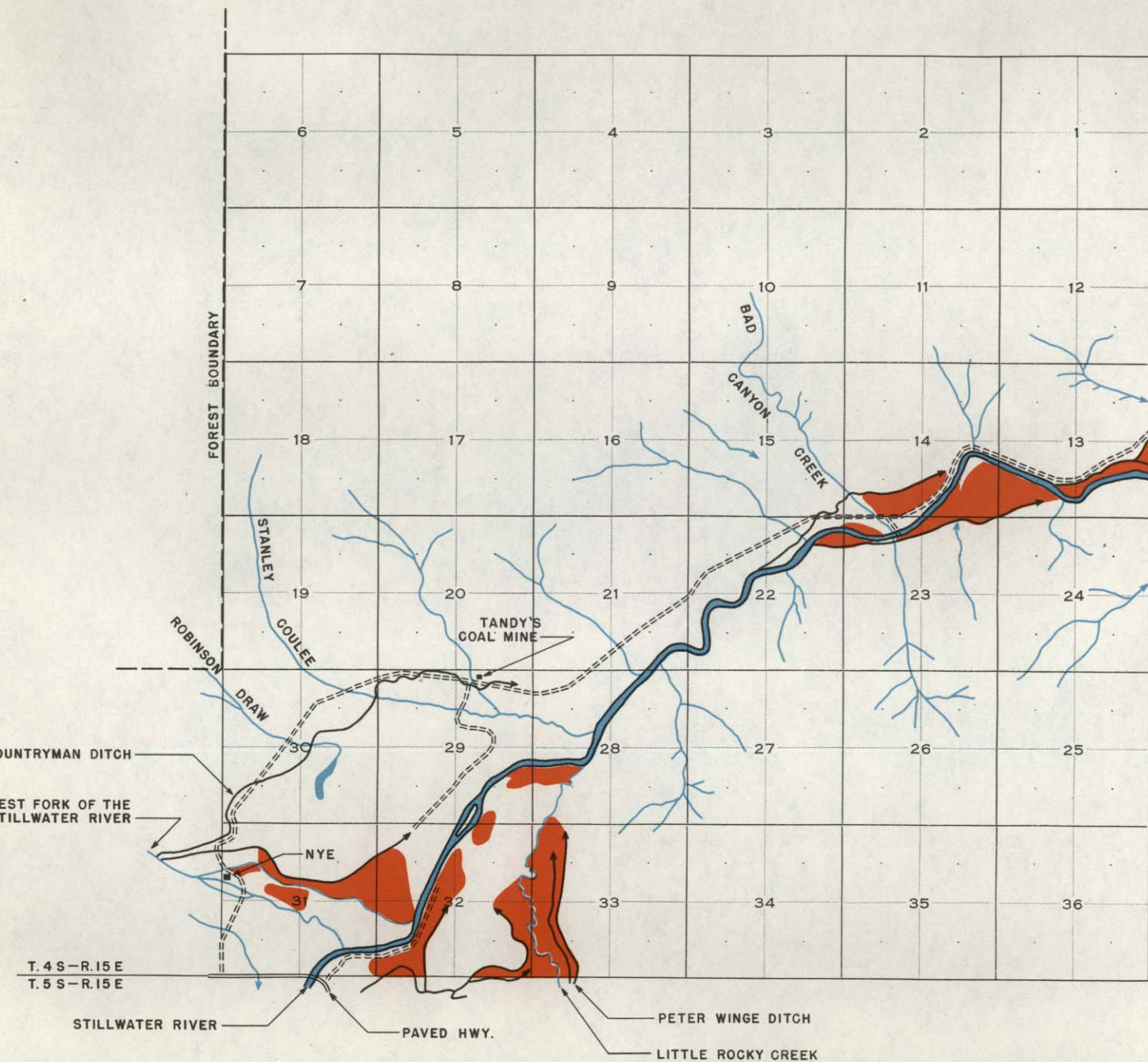
T. 3 S-R. 14 E
T. 4 S-R. 14 E

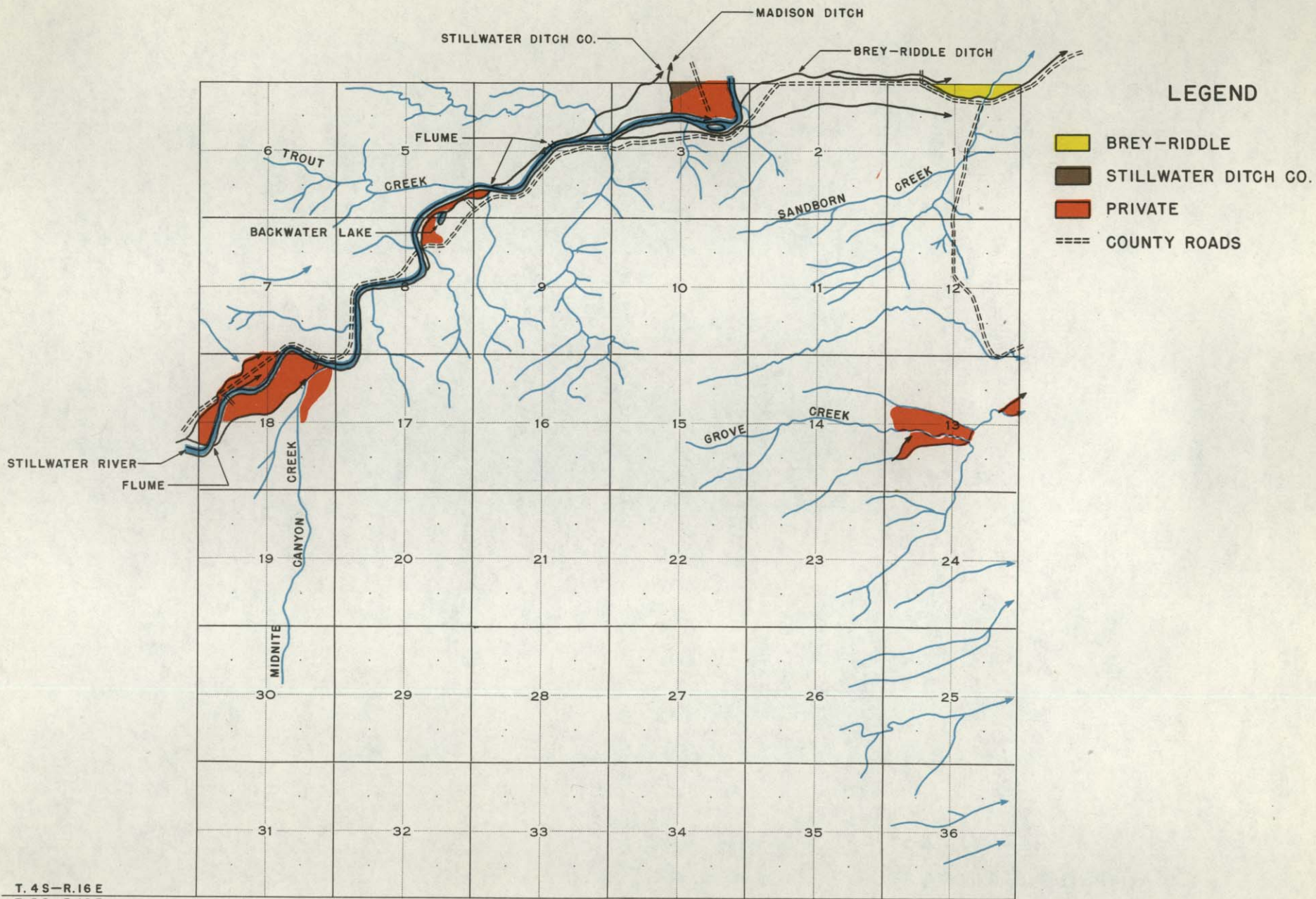




LEGEND

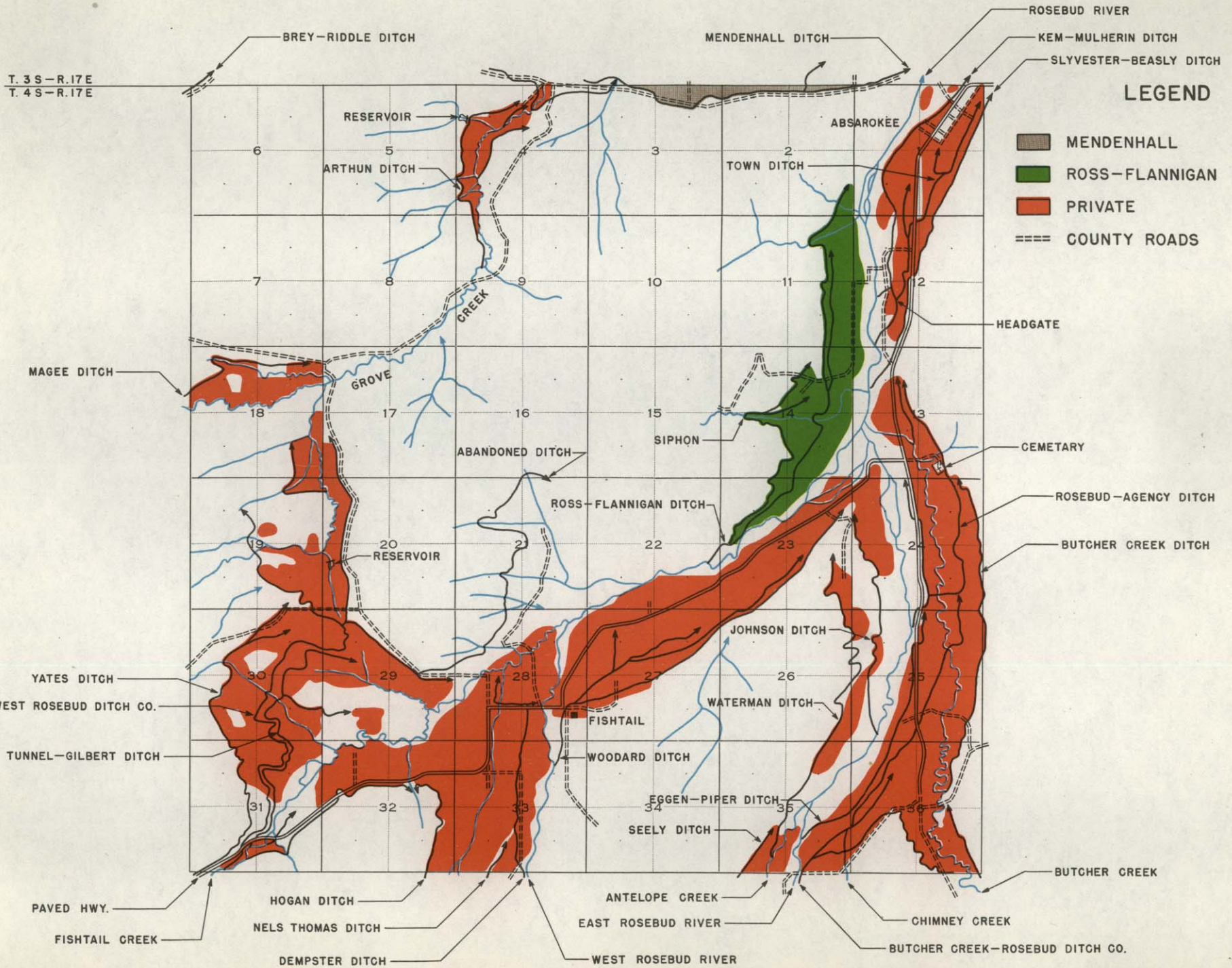
- PRIVATE
- COUNTY ROADS







T. 3 S - R. 17 E
T. 4 S - R. 17 E



24



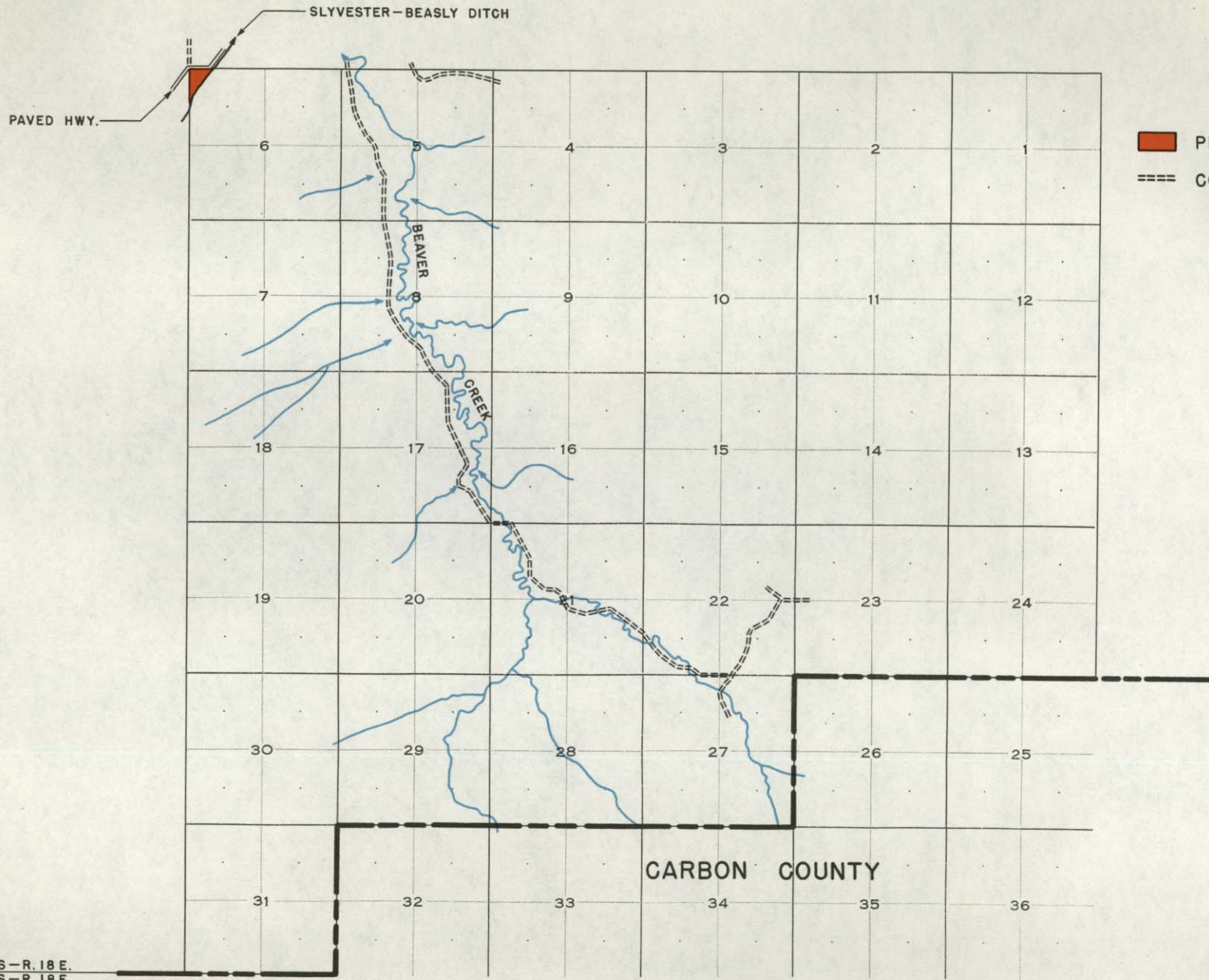
Township No. 4 SOUTH

Range No. 19 EAST

County STILLWATER

T. 4 SOUTH

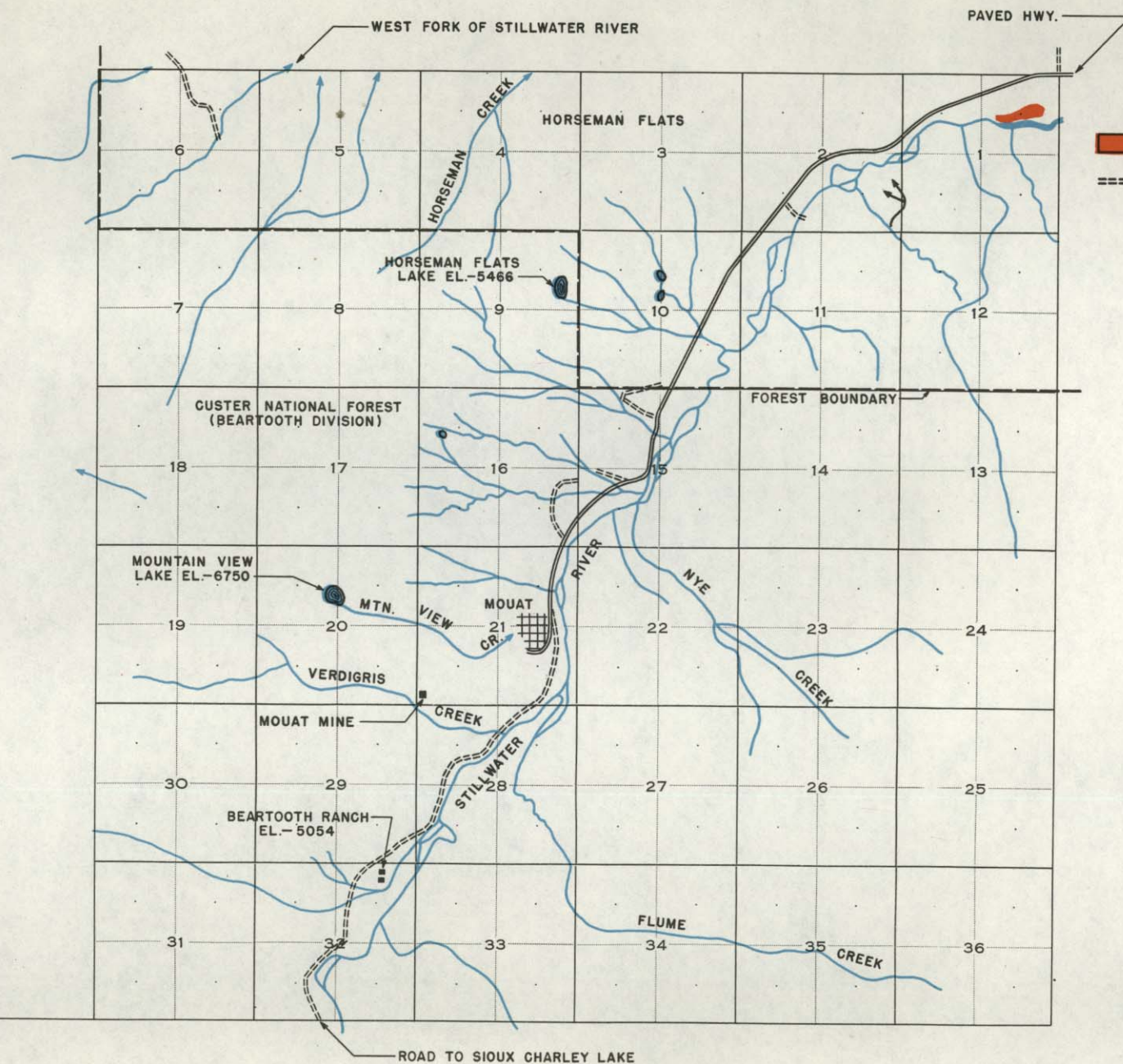
R. 19 EAST



LEGEND

- PRIVATE
- COUNTY ROADS

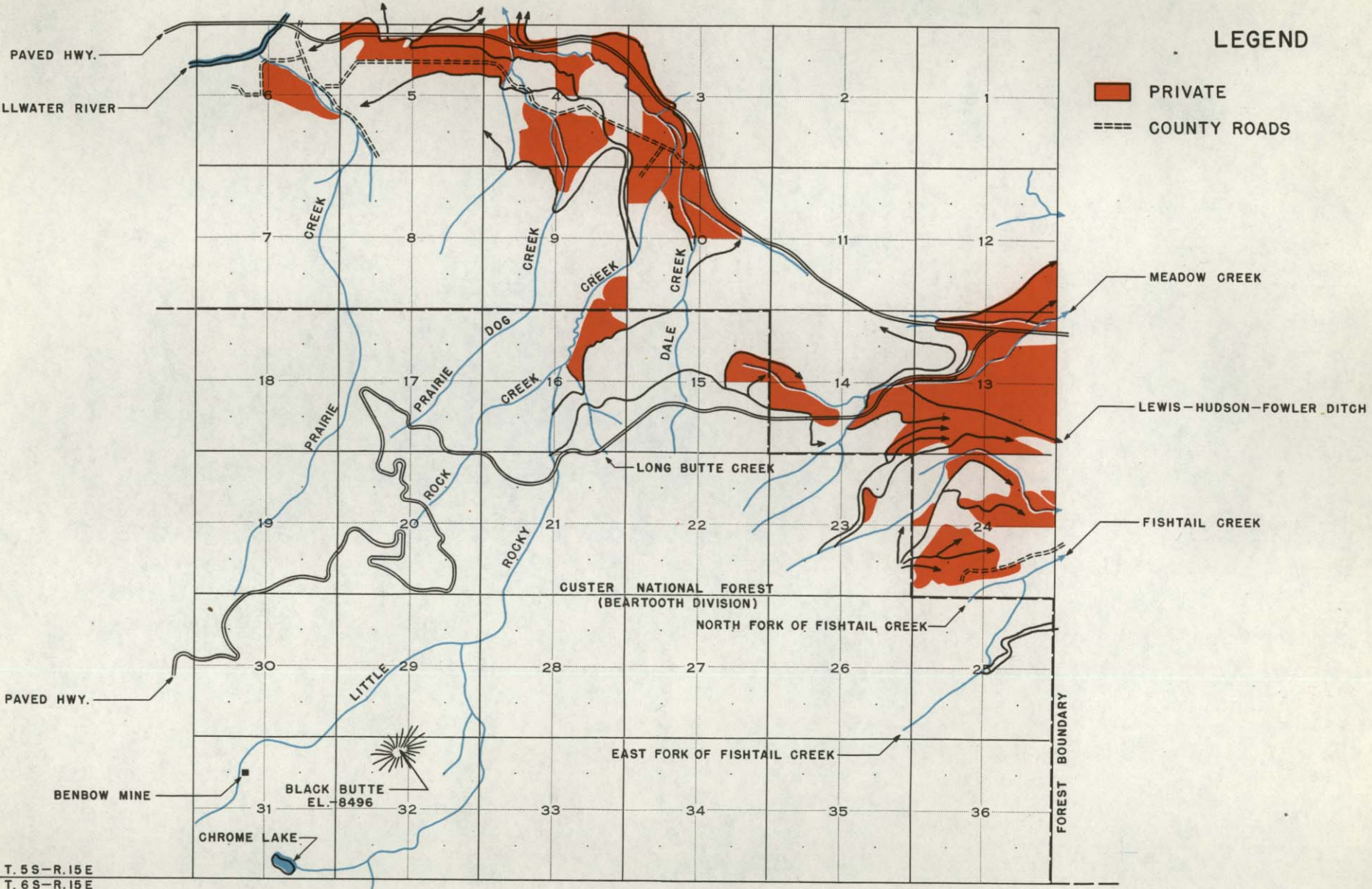
T. 4 S-R. 18 E.
T. 5 S-R. 18 E



LEGEND

- PRIVATE
- COUNTY ROADS

T. 5 S—R. 14 E
T. 6 S—R. 14 E



LEGEND

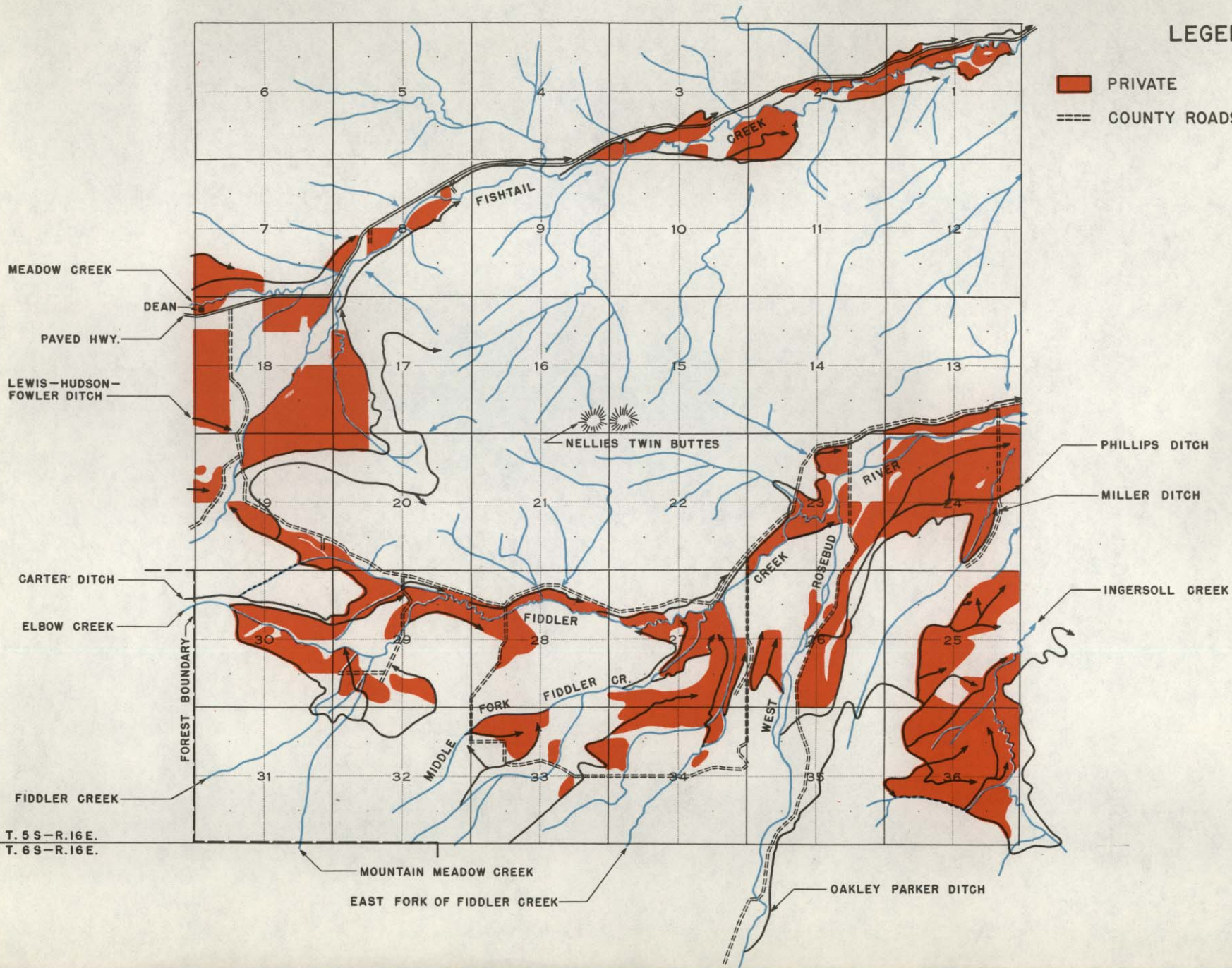
- PRIVATE
- COUNTY ROADS

T. 5S-R. 15E
T. 6S-R. 15E



LEGEND

- PRIVATE
- COUNTY ROADS



T. 5 S—R. 16 E.
T. 6 S—R. 16 E.



Township No. 5 SOUTH

Range No. 18 EAST

County STILLWATER

T. 5 SOUTH

R. 18 EAST

