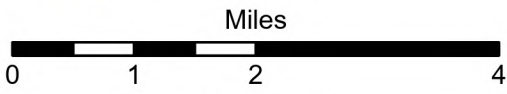




Mill Creek Diversion Sites

YELLOWSTONE RIVER ABOVE AND INCLUDING BRIDGER CREEK (Basin Name) - Basin 43B



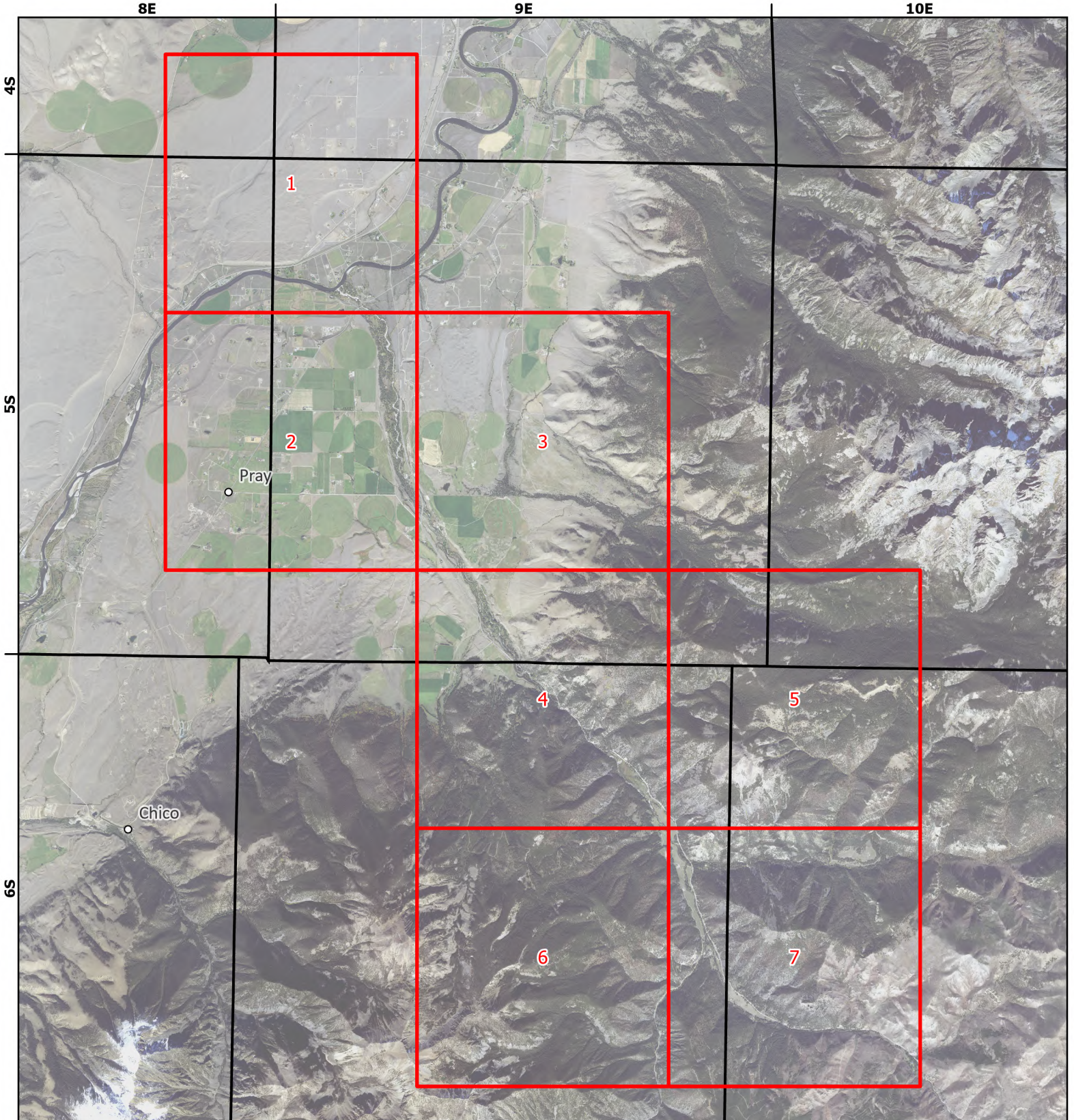
1:100,000



- Page # Index
- Township

- Interstate
- Cities and Towns

Aerial Photos: 2021 NAIP



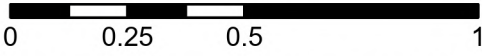
Mill Creek Diversion Sites

YELLOWSTONE RIVER ABOVE AND INCLUDING BRIDGER CREEK (Basin Name) - Basin 43B

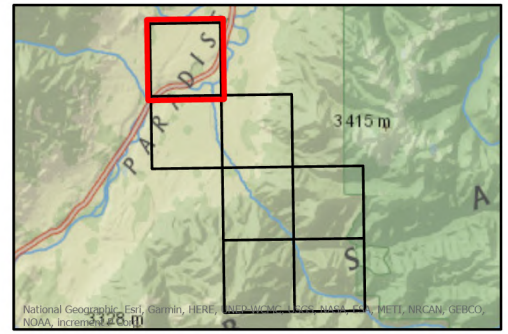


1:26,000

Miles

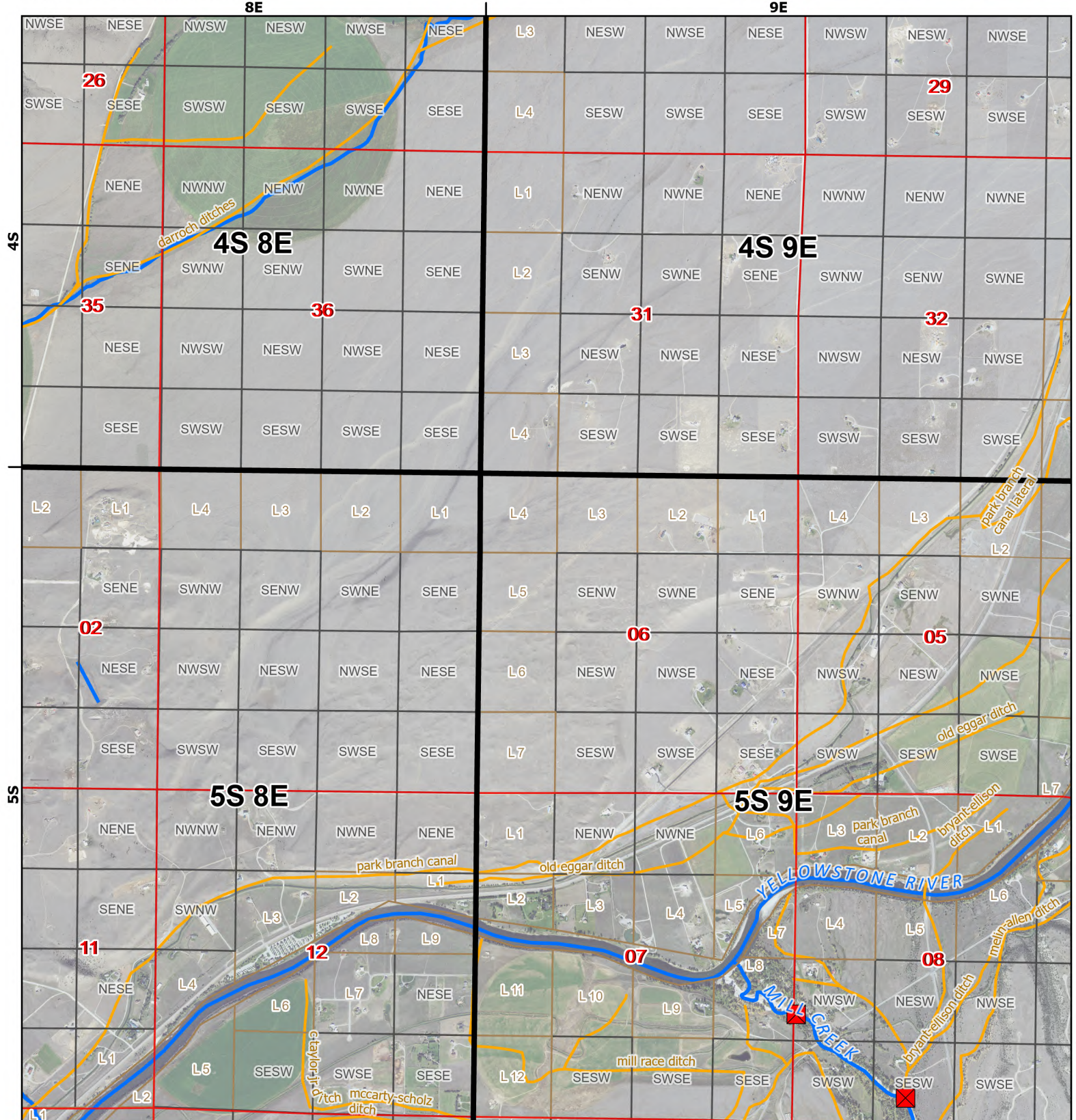


- ✖ Points of Diversion
- ~ Streams
- ~ Canal Ditch



* The diversions shown on this map are based on available data. The mapped diversions may not be correct.

Aerial Photos: 2021 NAIP



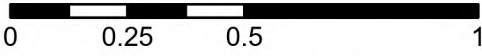
Mill Creek Diversion Sites

YELLOWSTONE RIVER ABOVE AND INCLUDING BRIDGER CREEK (Basin Name) - Basin 43B



1:26,000

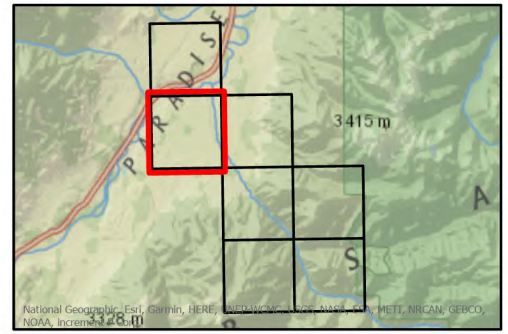
Miles



- ✖ Points of Diversion
- ~ Streams
- ~ Canal Ditch

* The diversions shown on this map are based on available data. The mapped diversions may not be correct.

Aerial Photos: 2021 NAIP



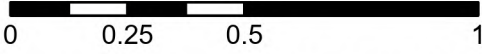
Mill Creek Diversion Sites

YELLOWSTONE RIVER ABOVE AND INCLUDING BRIDGER CREEK (Basin Name) - Basin 43B



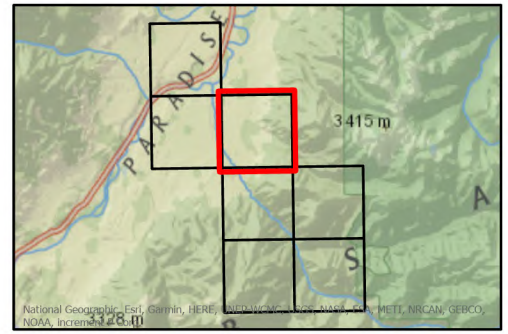
1:26,000

Miles



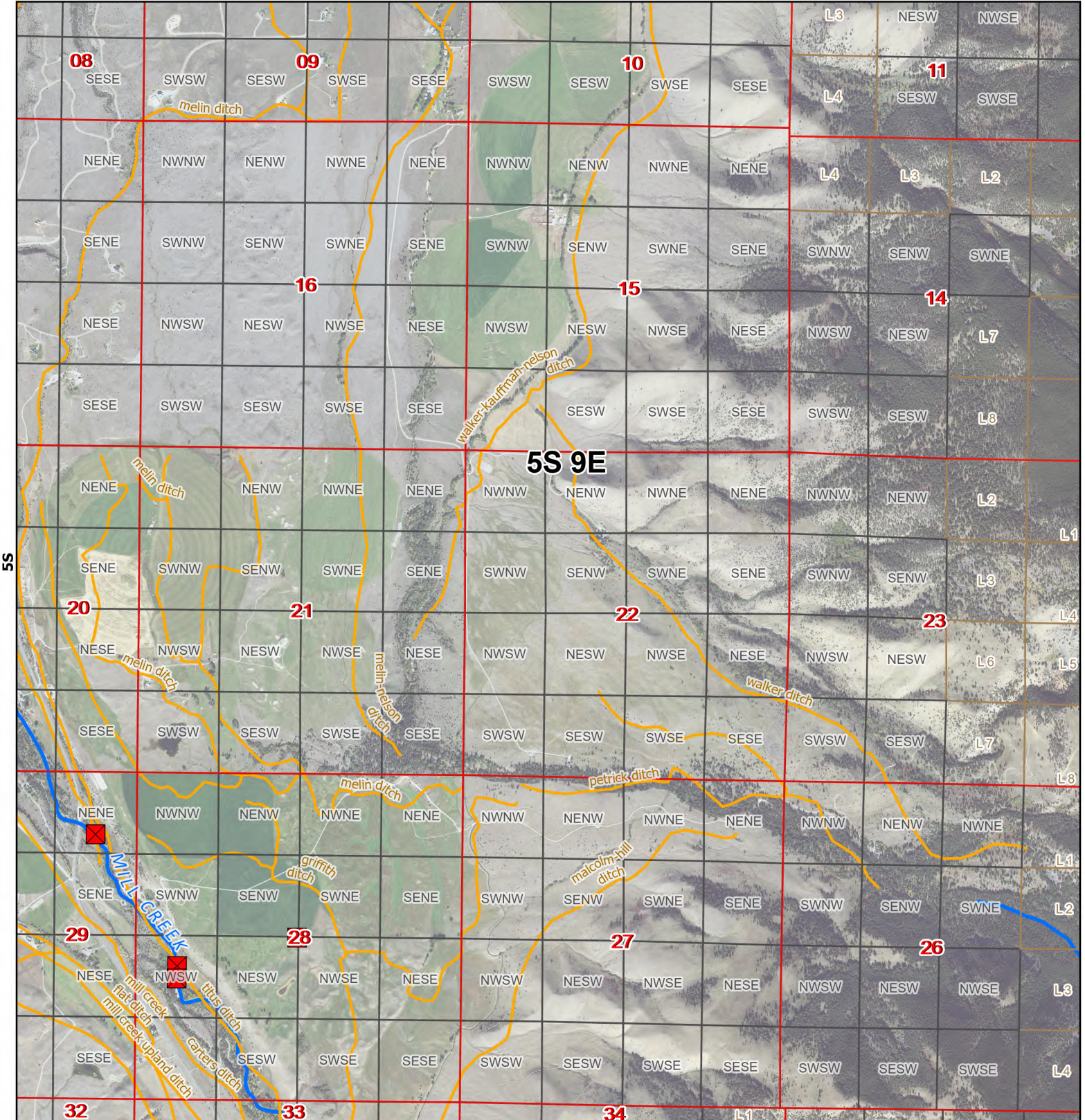
- ✖ Points of Diversion
- ~ Streams
- ~ Canal Ditch

Aerial Photos: 2021 NAIP



* The diversions shown on this map are based on available data. The mapped diversions may not be correct.

9E



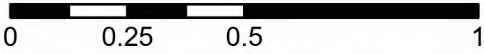
Mill Creek Diversion Sites

YELLOWSTONE RIVER ABOVE AND INCLUDING BRIDGER CREEK (Basin Name) - Basin 43B



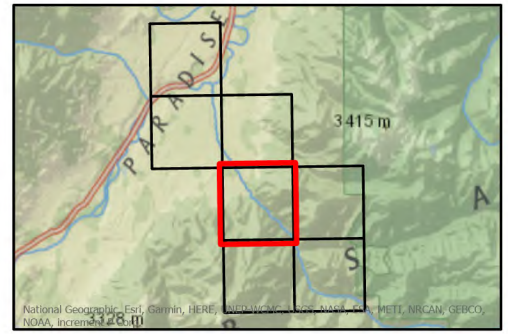
1:26,000

Miles

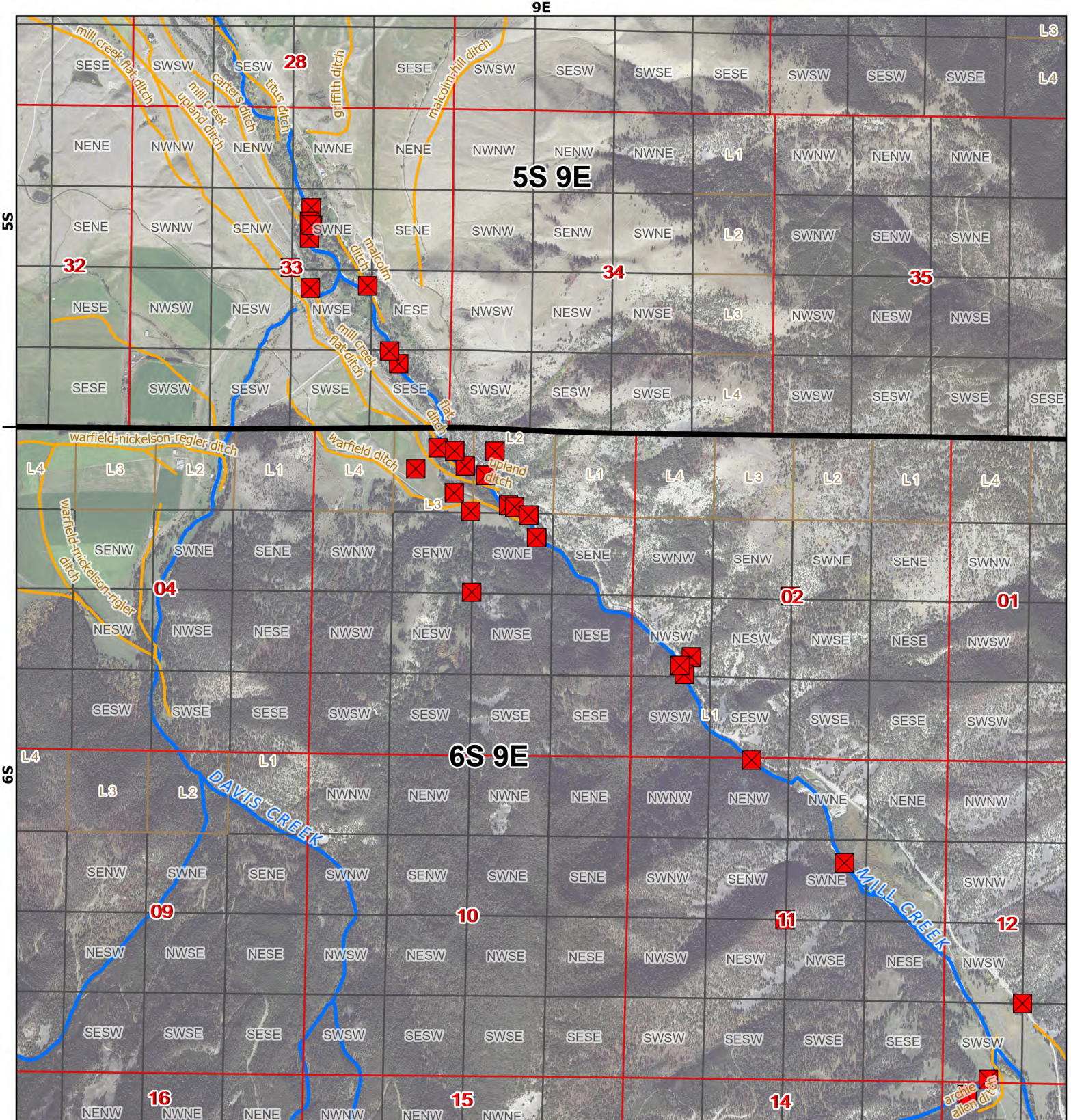


- Points of Diversion
- ~ Streams
- ~ Canal Ditch

Aerial Photos: 2021 NAIP



* The diversions shown on this map are based on available data. The mapped diversions may not be correct.



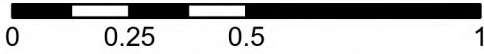
Mill Creek Diversion Sites

YELLOWSTONE RIVER ABOVE AND INCLUDING BRIDGER CREEK (Basin Name) - Basin 43B



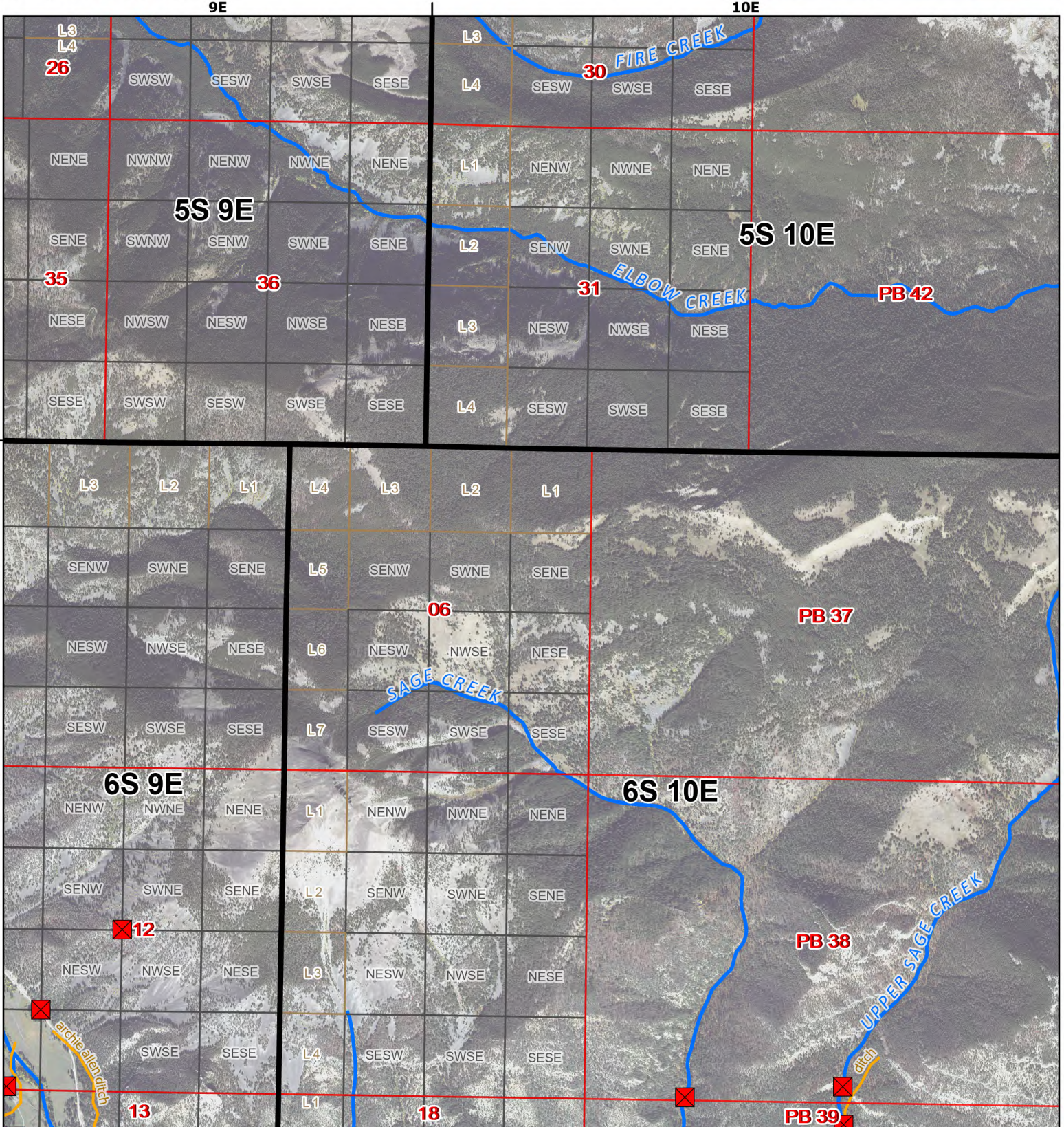
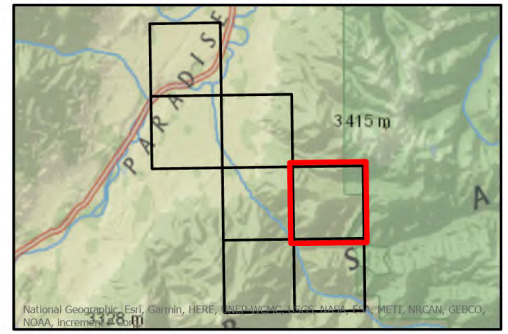
1:26,000

Miles



- ✖ Points of Diversion
- ~ Streams
- ~ Canal Ditch

Aerial Photos: 2021 NAIP



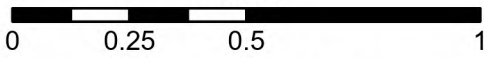
Mill Creek Diversion Sites

YELLOWSTONE RIVER ABOVE AND INCLUDING BRIDGER CREEK (Basin Name) - Basin 43B



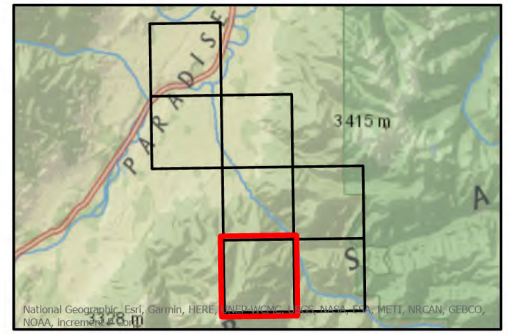
1:26,000

Miles



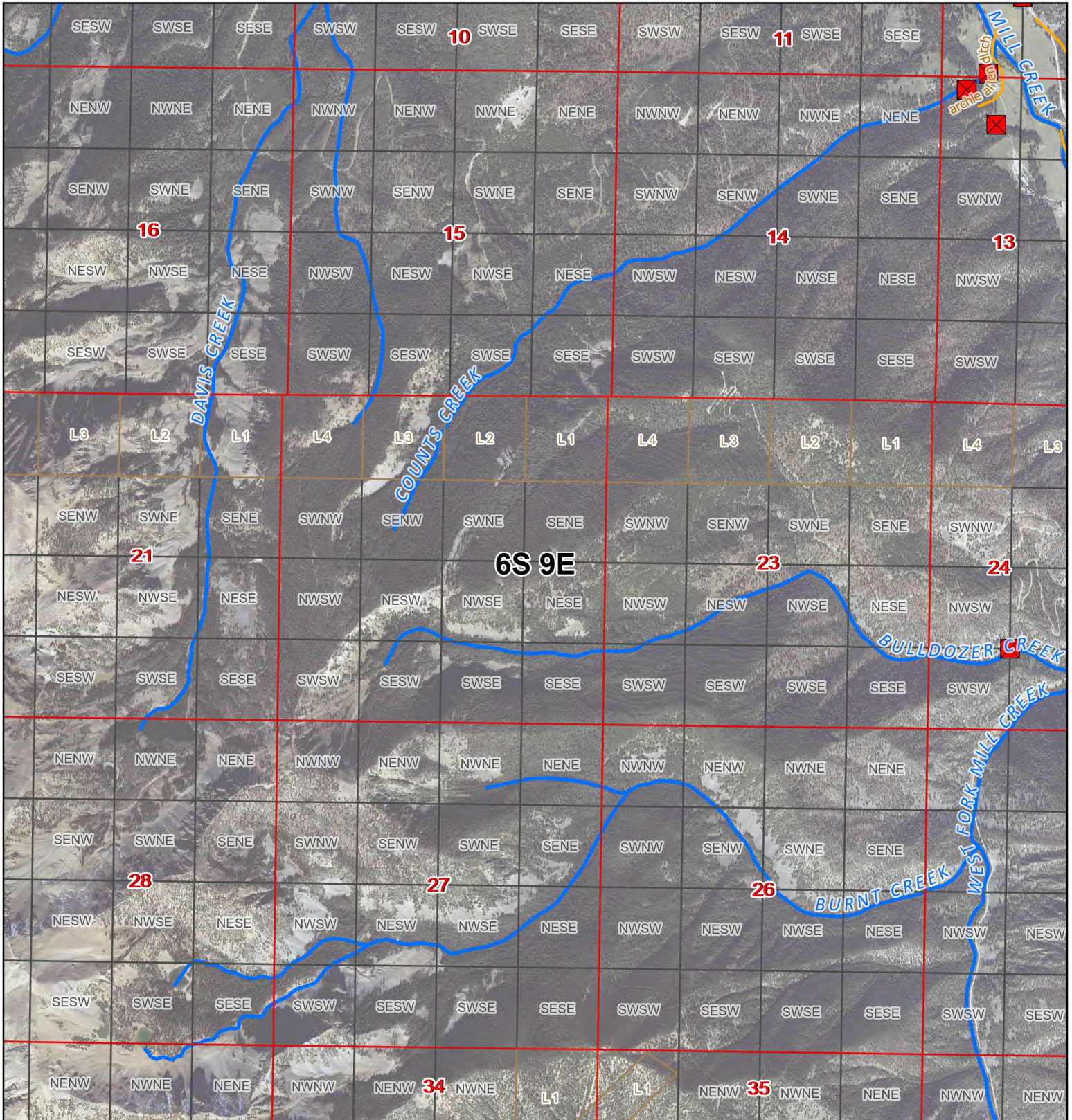
- ✖ Points of Diversion
- ~ Streams
- ~ Canal Ditch

Aerial Photos: 2021 NAIP



* The diversions shown on this map are based on available data. The mapped diversions may not be correct.

9E



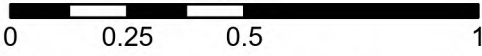
Mill Creek Diversion Sites

YELLOWSTONE RIVER ABOVE AND INCLUDING BRIDGER CREEK (Basin Name) - Basin 43B



1:26,000

Miles



- ✖ Points of Diversion
- ~ Streams
- ~ Canal Ditch

* The diversions shown on this map are based on available data. The mapped diversions may not be correct.

Aerial Photos: 2021 NAIP

