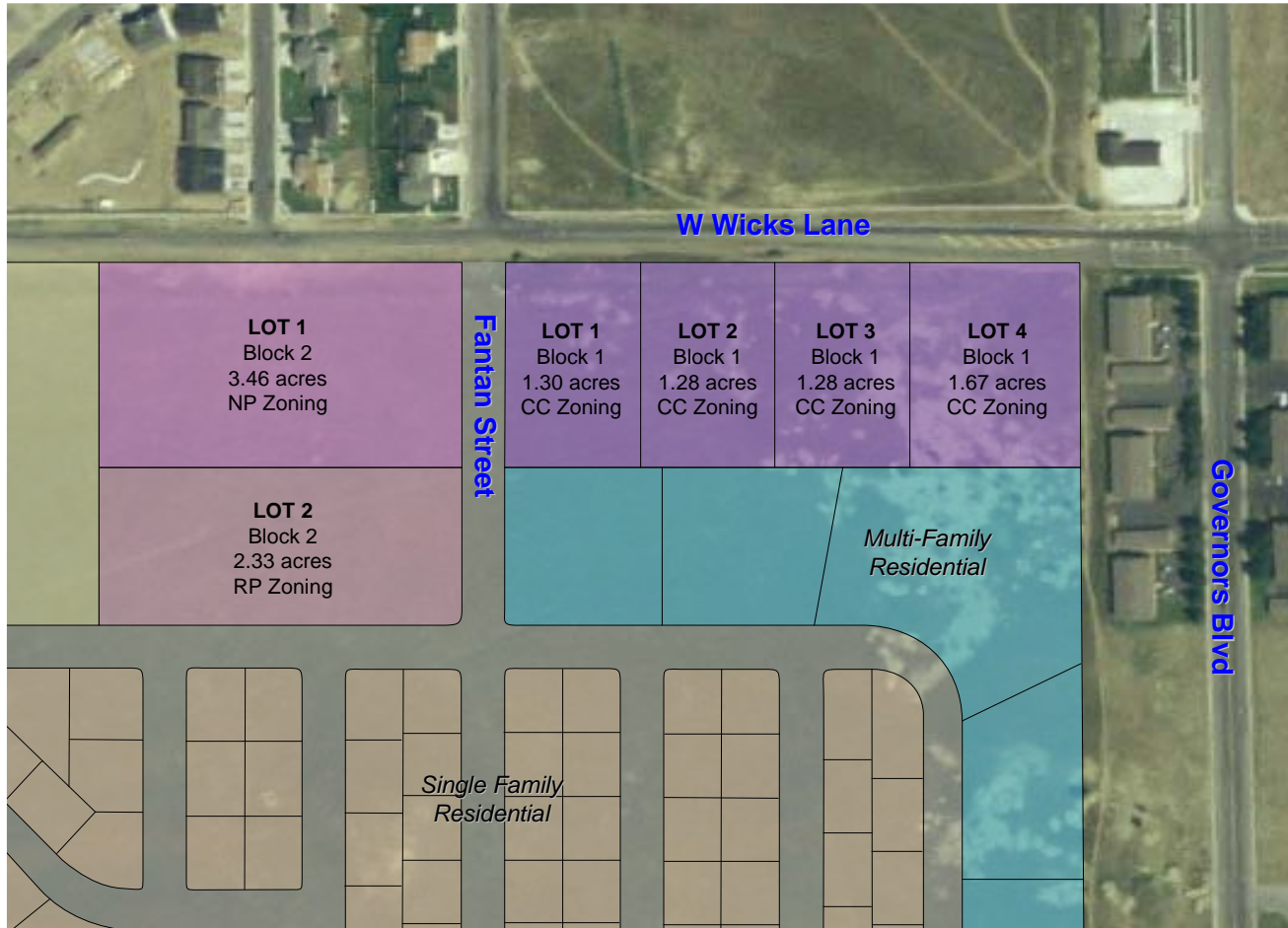


LOTS AVAILABLE FOR COMMERCIAL LEASE

SKYVIEW RIDGE COMMERCIAL CENTER

BILLINGS, MONTANA



DESCRIPTION: Planned for commercial/retail development

LOCATION: Wicks Lane and Fantan Street

ACCESS: Legal access via Wicks Lane and Fantan Street

ACREAGE: Six lots available, 11.32 acres total (more or less)

ZONING: Community Commercial [CC] (Retail/Commercial/Office), Neighborhood Commercial [NC] (Retail/Office/Commercial), and Residential Professional [RP] (Office)

UTILITIES: Water/Sewer/Gas/Electric at Wickes Lane

For further information contact:

Jeff Bollman, DNRC Southern Land Office (406) 247-4404, jbollman@mt.gov



Montana Department of Natural Resources
and Conservation



DISCLAIMER: This information is designed for general overview purposes only. Unless otherwise stated, all figures and depictions are approximate. Prospective bidders should review all information on record with the DNRC relating to the property and seek technical or legal advice as needed to assure the understanding of all legal descriptions, plat maps, surveys, and other documents relevant to the property. Visit us online at http://dnrc.mt.gov/trust/land_banking/lease. Contact Michael Sullivan for additional information (406) 444-6660.

UPDATED 5/12/09