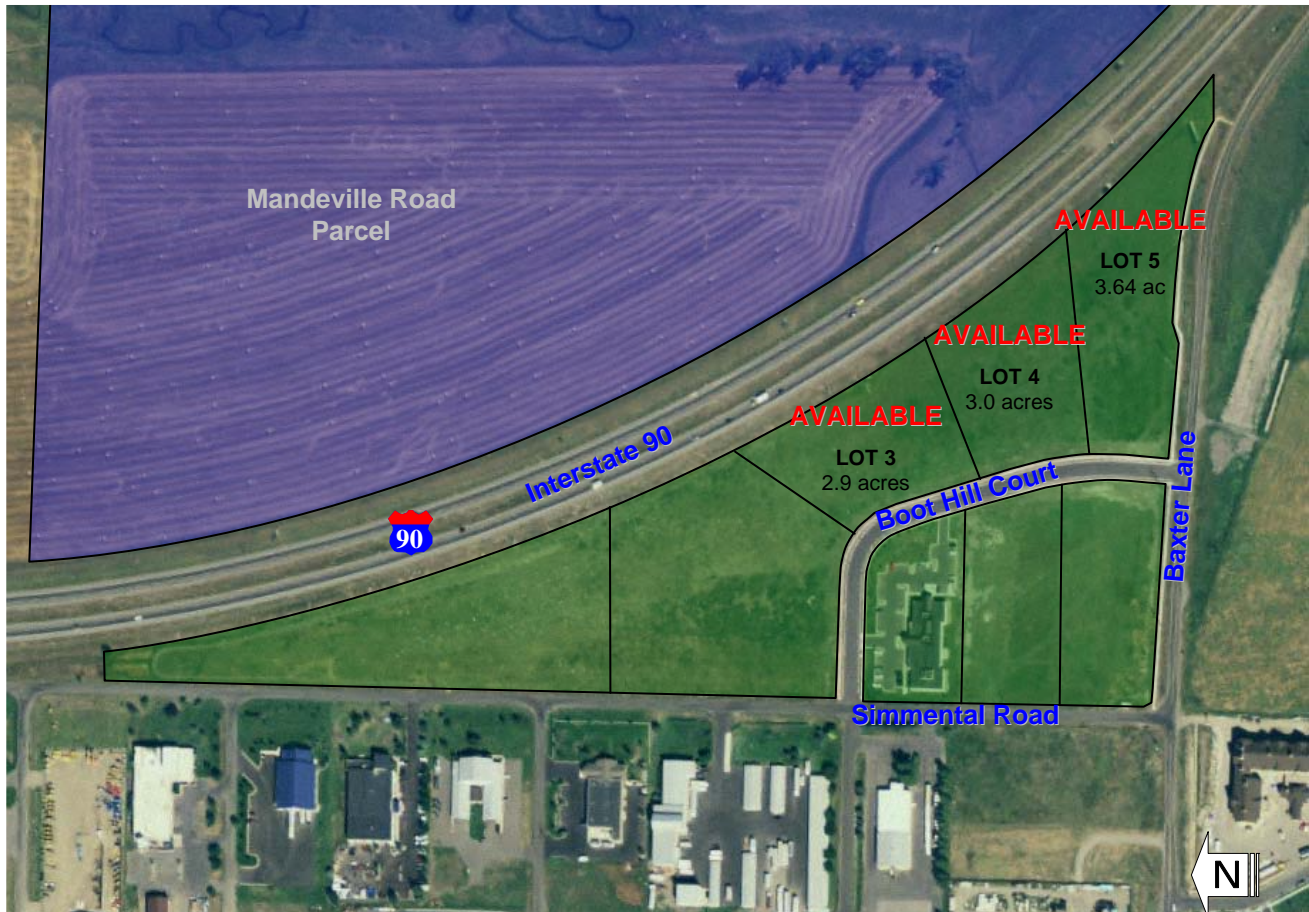


LOTS AVAILABLE COMMERCIAL LEASE

LEWIS AND CLARK SUBDIVISION

BOZEMAN, MONTANA



DESCRIPTION: Planned for mixed commercial/professional development

LOCATION: Baxter Lane and Boot Hill Court

ACCESS: Legal access via Boot Hill Court

ACREAGE: Three lots available, 9.54 acres total (more or less)

ZONING: City of Bozeman, M1 (Light Manufacturing) - includes commercial and office development. "A" Entryway Corridor Zoning Overlay.

UTILITIES: On-site

For further information contact:

Gavin Anderson, DNRC Central Land Office (406) 458-3502



Montana Department of Natural Resources
and Conservation



DISCLAIMER: This information is designed for general overview purposes only. Unless otherwise stated, all figures and depictions are approximate. Prospective bidders should review all information on record with the DNRC relating to the property and seek technical or legal advice as needed to assure the understanding of all legal descriptions, plat maps, surveys, and other documents relevant to the property. Visit us online at http://dnrc.mt.gov/trust/land_banking/lease. Contact Michael Sullivan for additional information (406) 444-6660.

UPDATED 4/28/09