

ACKLEY LAKE DAM

Fact Sheet

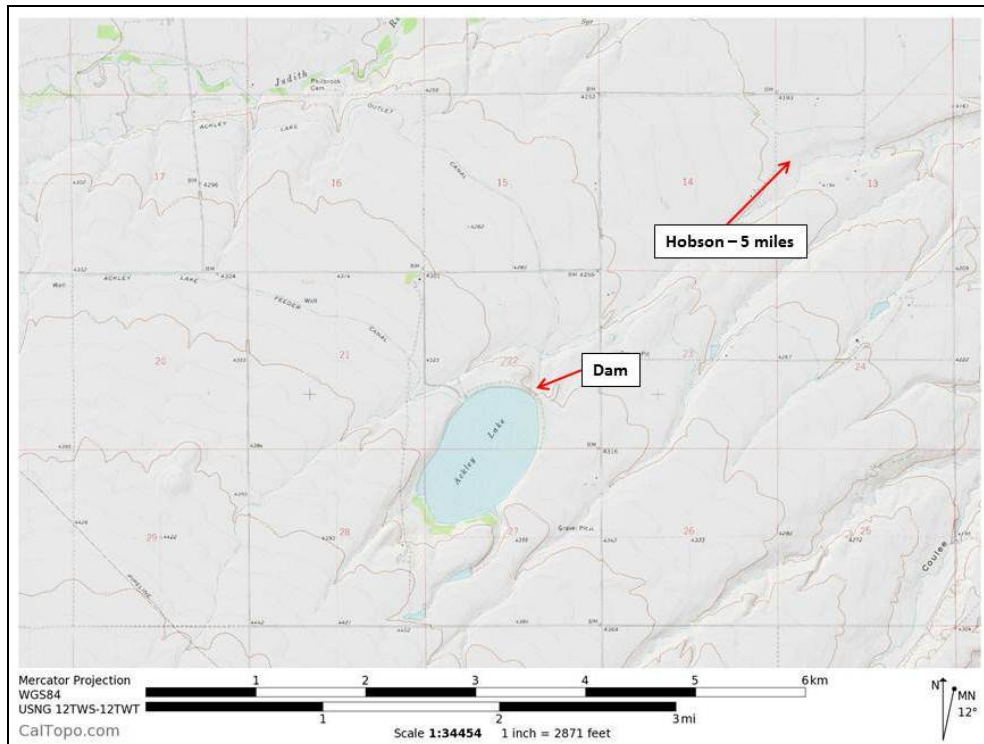
PROJECT DESCRIPTION

- ◆ Off-Stream storage project with a supply canal from the Judith River
- ◆ Located in Judith Basin County, 5 miles southwest of Hobson
- ◆ Construction completed in 1938
- ◆ Owned by DNRC & managed by SWPB
- ◆ Operated by the Ackley Lake Water Users Association since 1938
- ◆ Project consists of:
 - Earthen Embankment Dam, 51 feet high, 3,514 feet long
 - Unregulated, trapezoidal earthen section spillway
 - 44-inch internal diameter plastic lined corrugated metal pipe low level outlet
 - 48-inch diameter manually operated slide gate
- ◆ Storage at full pool is 6,722 acre-feet, covering 250 surface acres
- ◆ The dam is a “high hazard” structure which means that its failure could cause loss of life; farms, ranches, numerous homes, roads, bridges, and utilities are located in the flood plain.



WATER USE

- ◆ 27 water users have 53 contracts for 4,766 acre-feet of water
- ◆ Primary water use is irrigation; reservoir also used for water-based recreation
- ◆ Popular recreation site – Ackley Lake State Park, managed under lease by the MT Fish, Wildlife and Parks, surrounds the northern half of the reservoir.



REHABILITATION SUMMARY

Ackley Dam was rehabilitated in 2009. The rehabilitation project included:

- ◆ Installation of a toe berm and drain system,
- ◆ Lining of the existing corrugated metal pipe outlet with a cured-in-place plastic pipe,
- ◆ Construction of a new principal spillway crest structure and auxiliary spillway
- ◆ Installation of new fencing and a redesigned access road.

DNRC received an RRGL grant in the amount of \$100,000 and a \$200,000 RRGL loan for the rehabilitation project (2009 biennium). Additionally, a biennial appropriation of \$1.1 million came from the Water Storage and Hydropower Earnings Account.

FUTURE NEEDS

The project was rehabilitated in 2009 and meets or exceeds current dam safety standards. No deficiencies currently exist.



Spillway approach and earthen spillway



Outlet and gatehouse located on dam crest